

JAN 10 2000

Approved By Delta County
Land Survey Remonumentation
Per Group Under Act 345 Of
P.A. 1990 On 3-3, 1999
Daryl B. Babbitt
Chairman

SECTION

LAND CORNER RECORDATION CERTIFICATE
Filing Requirement of Act 74, Mich. P.A. 1970

For corners in
DELTA
(County)

Located In: Corner Code #

1. Public Land Survey	T 39 N R 18 W	G-4 ✓
	T 39 N R 18 W	G-5
	T R	
	T R	
2. Property Controlling in Section	S T R	
	S T R	
3. Miscellaneous Property in Sec.	S T R	
	S T R	

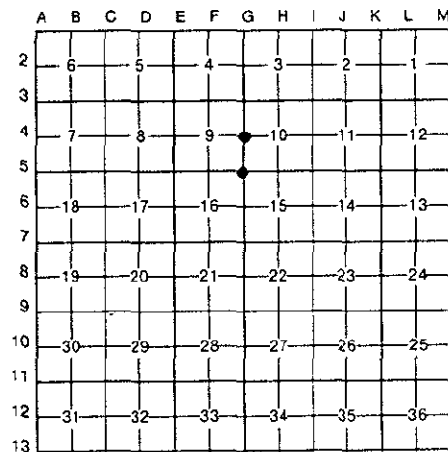
Mar 4 1999
9:00 AM
Page 152
John C. [Signature]

Register of Deeds Stamp & File Number

4. Lot No. _____, Recorded Plat _____
5. Private Claims _____

G-4 [W1/4 COR SEC 10] G-5 [NW COR SEC 15]

I, M.P. DAVIS, in a field survey on FEBRUARY, 19 99, do hereby certify that under requirements of P.A. 74, Michigan P.A. of 1970, the corner points mentioned in lines 1 and 2 above were in conformance with regulations and rules therefore as required in the current manual of survey instructions of the United States Department of the Interior, Bureau of Land Management or by a decree of a Court of Law and/or that the corner points mentioned in lines 3, 4 and 5 above were in conformance with the rules of the Michigan Board of Land Surveyors or by a Decree of a Court of Law; established, re-established, monumented, re-monumented, recovered, found as expressed below:



NOTE: Not more than 4 corners, all in the same town and range, may be recorded on this certificate.

A. Description of original monument and accessories and/or subsequent restoration:

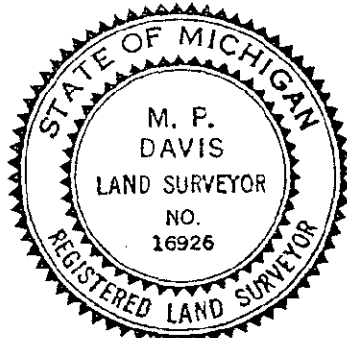
G-4 [W1/4 COR SEC. 10] A.MERRYWEATHER, DS-1848-SET WOOD POST (BIRCH 29° N60°E 26 LINKS)(BEECH 05° S61°W 19 LINKS) FRANK BRAY, RLS-1972-L.1 PG. 221 LCR'S- ESTABLISHED BY RETRACEMENT OF SUBDIVISION OF SEC 9-SET 1/2" REBAR (W.BIRCH TWIN S66°W 36.5')(COR FENCE POST N87°E 25.5')

G-5 [NW COR SEC 15] A.MERRYWEATHER, DS-1848-SET WOOD POST-(SUGAR 12° N60°E 04 LINKS)(HEMLOCK 14° S35°W 19 LINKS) FRANK BRAY, RLS-1972-L.1 PG.222 LCR'S-SET 1/2" REBAR AT JCT OF C.R. C/L'S N-S & E-W (BIRCH 04° N71°W 100.0')(PP S41°W 50.9')(PP S48°E 52.9')

B. Description of corner evidence found and/or method applied in restoring or reestablishing corner:

G-4 [W1/4 COR SEC. 10] FOUND IN PLACE A 1/2" X 12" REBAR. ID CORNER MONUMENT FROM BT'S REC'D IN L.1 OF LCR'S PG.221. ACCEPTED EXISTING MONUMENT AS BEING THE BEST AVAILABLE EVIDENCE AS TO THE LOCATION OF THE POSITION OF THE ORIGINAL CORNER.

G-5 [NW COR SEC 15] FOUND IN PLACE A 1/2" X 12" REBAR. ID CORNER MONUMENT FROM BT'S REC'D IN L.1 OF LCR'S PG.223. ACCEPTED EXISTING MONUMENT AS BEING THE BEST AVAILABLE EVIDENCE AS TO THE LOCATION OF THE POSITION OF THE ORIGINAL CORNER.



C. Description of monument for corner and accessories established to perpetuate locating the position of the corner:

G-4 REPLACED EXISTING MONUMENT W/A 5/8" X 18" REBAR W/A 3 1/4" ALUM CAP STAMPED TO ID THE CORNER POSITION.
CEDAR 10" CEDAR 04" 4" IRON PIPE GATE POST SURVEY MONUMENT SIGN POST
N25°W S61°W S72°E WEST
69.69' 57.57' 30.12' (TO FACE) 26.21' (TO FACE)

G-5 REPLACED EXISTING MONUMENT W/A 5/8" X 18" REBAR W/A 3 1/4" ALUM CAP STAMPED TO ID THE CORNER POSITION.
CEDAR 04" CEDAR 05" POWER POLE SURVEY MONUMENT SIGN POST
N44°W N46°E S44°E S44°W SOUTH
55.05' 69.45' 53.95' 47.25' (TO FACE)

NOTE: BEARINGS TO REFERENCE OBJECTS ARE MAGNETIC-DISTANCES ARE TO A NAIL W/A DELTA COUNTY REFERENCE TAG, UNLESS OTHERWISE NOTED.

Signed by M.P. DAVIS Date 2/15/99

Surveyor's Michigan License No. 16926