

JAN 6 2000

Approved By Delta County
Land Survey Remonumentation
Peer Group Under Act 345 Of
P.A. Of 1990 On Dec 28, 1999

LAND CORNER RECORDATION CERTIFICATE
Filing Requirement of Act 74, Mich. P.A. 1970

Robert Schmeling
Acting Chairman

SECTION

For corners in

DELTA (County)	Located in:	Corner Code #
1. Public Land Survey	T 39 NR 18 W	B-11
	T 39 NR 18 W	H-07 ✓
	T R	
	T R	
2. Property Controlling in Section	S T R	
	S T R	
3. Miscellaneous Property in Sec.	S T R	
	S T R	

01-04-00
2:00 O'CLOCK PM
9 PAGE 167
William C. Thomas
CLERK, REGISTER OF DEEDS

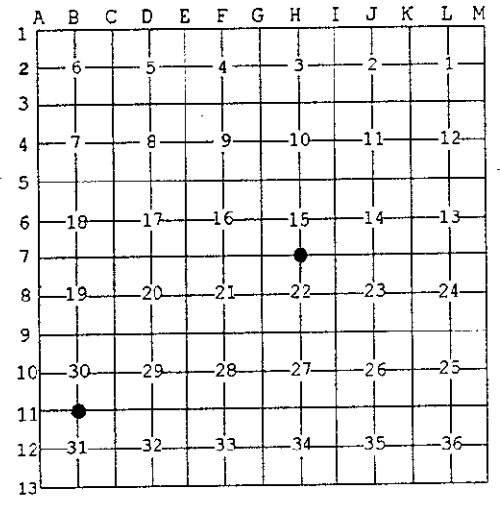
Register of Deeds Stamp & File Number

B-11 [N1/4 COR SEC 31] H-07 [N1/4 COR SEC 22]

4. Lot No. _____, Recorded Plat _____
5. Private Claims _____

I, M.P. DAVIS, in a field survey on DECEMBER, 19 99 do hereby state that under requirements of P.A. 74, Michigan P.A. of 1970, the corner points mentioned in lines 1 and 2 above were in conformance with regulations and rules therefore as required in the current manual of survey instructions of the United States Department of the Interior, Bureau of Land Management or by a decree of a Court of Law and /or that the corner points mentioned in lines 3, 4 and 5 above were in conformance with the rules of the Michigan Board of Land Surveyors or by a Decree of a Court of Law; established, re-established, monumented, recovered, found as expressed below:

NOTE: Not more than 2 corners, all in the same town and range, may be recorded on this certificate.

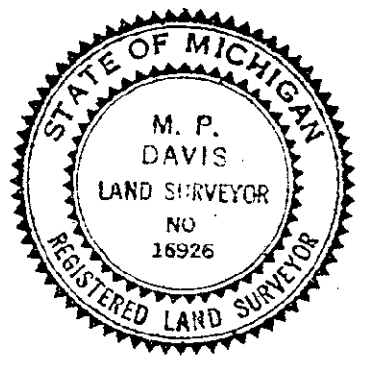


A. Description of original monument and accessories and/or subsequent restoration:

- B-11 [N1/4 COR SEC 31] A.MERRYWEATHER,D.S.-1848-WOOD POST (POPLAR 10" S30°W 13 LINKS)(TAMARACK 07" N10°E 02 LINKS) NO RECORD EVIDENCE OF CORNER RECOVERY AND/OR SUBSEQUENT MONUMENTATION.
- H-07 [N1/4 COR SEC 22] A.MERRYWEATHER,D.S.-1848-WOOD POST (POPLAR 04 EAST 06 LINKS)(TAMARACK 05" S45°W 20 LINKS) NO RECORD EVIDENCE OF CORNER RECOVERY AND/OR SUBSEQUENT MONUMENTATION.

B. Description of corner evidence found and/or method applied in restoring or reestablishing corner:

- B-11 [N1/4 COR SEC 31] NO CORNER EVIDENCE FOUND. REESTABLISHED CORNER POSITION ON LINE WITH AND AT MIDPOINT BETWEEN SECTION CORNERS 1/2 MILE EAST & WEST.
- H-07 [N1/4 COR SEC 22] NO CORNER EVIDENCE FOUND. FOUND IN PLACE A 3/4" IRON PIN, BY PERSONS UNKNOWN, AT THE W1/16 COR BETWEEN SEC'S 15/22, ID BY FARM OCCUPATION SOUTH AND APPROX. C/L OF E-W COUNTY ROAD. EXTENDED LINE EAST FROM NW COR OF SEC 22 THRU THE W1/16 AND ESTABLISHED THE 1/4 COR ON THIS LINE & AT PROPORTIONATE DISTANCE EAST OF THE W1/16 CORNER. MONUMENTED POSITION FALLS AT THE APPROX C/L PI OF THE COUNTY ROAD WEST AND SOUTH AND IN AN APPROX 3' FILL SECTION. ACCEPTED THIS POSITION AS BEING THE BEST AVAILABLE EVIDENCE AS TO THE LOCATION OF THE POSITION OF THE ORIGINAL CORNER.



C. Description of monument for corner and accessories established to perpetuate locating the position of the corner:

- B-11 SET A BERNTSEN A1NB30 ALUM MONUMENT WITH THE CAP STAMPED TO ID THE CORNER POSITION

CEDAR 08"	TAMARACK 06"	CEDAR 07"	CEDAR 06"
N15°W	N87°E	S33°E	S88°W
34.28'	12.10'	17.05'	03.93'
- H-07 SET A 5/8" X 18" REBAR W/A 3-1/4" ALUM CAP STAMPED TO ID THE CORNER POSITION.

CEDAR 07"	CEDAR 12"	CEDAR 13"	POWER POLE
N10°W	N20°E	S45°E	S62°W
37.65'	38.12'	72.70'	60.22'

NOTE: BEARINGS TO REFERENCE OBJECTS ARE MAGNETIC-DISTANCES ARE TO A NAIL W/A DELTA COUNTY REFERENCE TAG, UNLESS OTHERWISE NOTED.

Signed by M.P. DAVIS
Surveyor's Michigan License No. 16926

Date 12/21/99