

JAN 23 2000

SECTION

LAND CORNER RECORDATION CERTIFICATE
Filing Requirement of Act 74, Mich. P.A. 1970

Approved By Delta County
Land Survey Remonumentation
Peer Group Under Act 345 Of
P.A. Of 1990 On Dec 28, 1999
Robert Schmeling
acting Chairman

For corners in

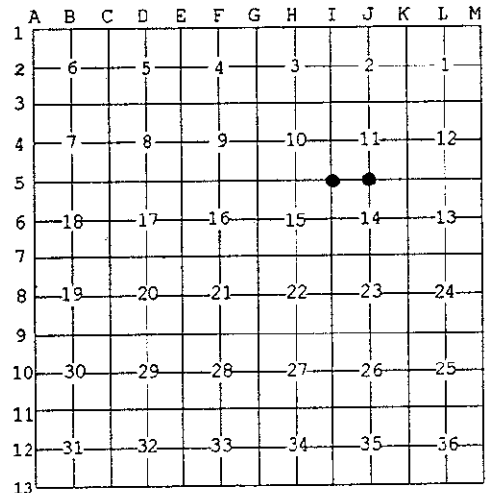
DELTA (County)	Located In:	Corner Code #
1. Public Land Survey	T 39 NR 18 W	I-05
	T 39 NR 18 W	J-05 ✓
	T R	
	T R	
	T R	
2. Property Controlling in Section	S T R	
	S T R	
	S T R	
3. Miscellaneous Property in Sec.	S T R	
	S T R	

01-04-00
2:00 O'CLOCK PM
9 PAGE 166
Walter C. Thomas
REGISTER OF DEEDS
Register of Deeds Stamp & File Number

1-05 [NW COR SEC 14] J-05 [N1/4 COR SEC 14]
4. Lot No. _____, Recorded Plat _____
5. Private Claims _____

I, M.P. DAVIS, in a field survey on DECEMBER, 1999 do hereby state that under requirements of P.A. 74, Michigan P.A. of 1970, the corner points mentioned in lines 1 and 2 above were in conformance with regulations and rules therefore as required in the current manual of survey instructions of the United States Department of the Interior, Bureau of Land Management or by a decree of a Court of Law and /or that the corner points mentioned in lines 3, 4 and 5 above were in conformance with the rules of the Michigan Board of Land Surveyors or by a Decree of a Court of Law; established, re-established, monumented, recovered, found as expressed below:

NOTE: Not more than 2 corners, all in the same town and range, may be recorded on this certificate.

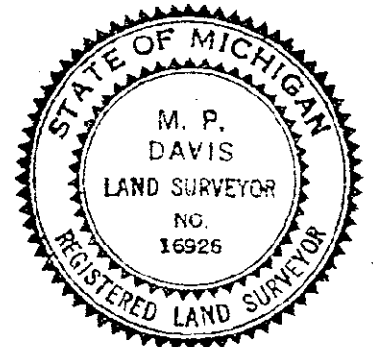


A. Description of original monument and accessories and/or subsequent restoration:

- I-05 [NW COR SEC 14] A.MERRYWEATHER,D.S.-1848-WOOD POST (POPLAR 04" N20°E 19 LINKS)(BIRCH 03" S30°W 06 LINKS) FRANK BRAY M.D.N.R.-1972-L.1 OF LCR'S PG 152-FOUND AXEL SHAFT WITH A 4" HUB (W.SPRUCE SOUTH 21.3')(BALSAM S66°E 17.4')
- J-05 [N1/4 COR SEC 14] A.MERRYWEATHER,D.S.-1848- WOOD POST (POPLAR 03 N15°W 02 LINKS)(TAMARACK 04" S55°E 05 LINKS) NO RECORD EVIDENCE OF CORNER RECOVERY AND/OR SUBSEQUENT MONUMENTATION.

B. Description of corner evidence found and/or method applied in restoring or reestablishing corner:

- I-05 [NW COR SEC 14] FOUND IN PLACE AN AXEL SHAFT W/A 4" HUB. ID CORNER MONUMENT AS BEING THE SAME FOUND BY BRAY IN 1972, BOTH OF HIS BT'S ARE STILL IN PLACE AND GREEN WITH FACE BLAZES NOW OVER GROWN. ACCEPTED EXISTING MONUMENT AS BEING THE BEST AVAILABLE EVIDENCE AS TO THE LOCATION OF THE POSITION OF THE ORIGINAL CORNER.
- J-05 [N1/4 COR SEC 14] NO CORNER EVIDENCE FOUND. REESTABLISHED THE CORNER POSITION ON LINE WITH AND AT THE MIDPOINT BETWEEN SECTION CORNERS 1/2 MILE EAST AND WEST. CORNER POSITION FALLS IN LINE WITH ANCIENT FARM FENCE TO THE SOUTH.



C. Description of monument for corner and accessories established to perpetuate locating the position of the corner:

- I-05 DID NOT DISTURB THE EXISTING MONUMENT. STAMPED AXEL HUB TO ID THE CORNER POSITION.

CEDAR 04"	BALSAM 09"(OLD BT)	SPRUCE 12"(OLD BT)	POWER POLE	C/L E-W' COUNTY ROAD
S64°W	S66°E	SOUTH	SOUTH	NORTH
21.67'	17.60'	21.85'	0.50' (TO FACE)	32'±
- J-05 SET A 5/8" X 18" REBAR W/A 3-1/4" ALUM CAP STAMPED TO ID THE CORNER POSITION.

MAPLE 08"	SPRUCE 11"	ASPEN 10"	SURVEY MONUMENT SIGN POST
N07°W	N58°E	S45°W	SOUTH
48.48'	85.93'	51.25'	26.35' (TO FACE)

NOTE: BEARINGS TO REFERENCE OBJECTS ARE MAGNETIC-DISTANCES ARE TO A NAIL W/A DELTA COUNTY REFERENCE TAG, UNLESS OTHERWISE NOTED.

Signed by M.P. Davis Date 12/23/99
Surveyor's Michigan License No. 16926