

JAN 13 2000

SECTION

Approved By Delta County
Land Survey Remonumentation
Peer Group Under Act 345 Of
P.A. Of 1990 On Dec 28, 1999

LAND CORNER RECORDATION CERTIFICATE
Filing Requirement of Act 74, Mich. P.A. 1970

Robert Schmeling
Chairman

For corners in

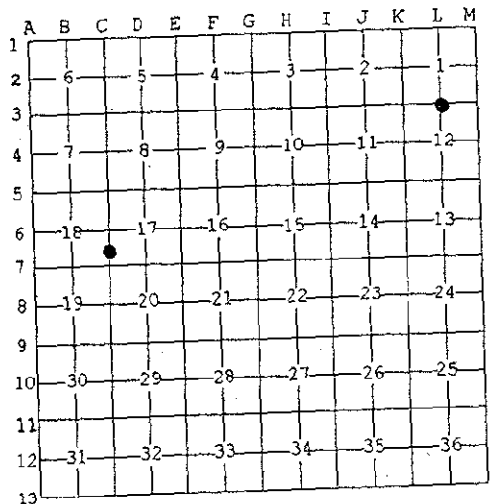
DELTA (County)	Located In:	Corner Code #
1. Public Land Survey	T 39 N R 18 W T 39 N R 18 W	L-03 ✓ C-6/7 MC REF. MON. (6)
2. Property Controlling in Section	T R T R	
3. Miscellaneous Property in Sec.	S T R S T R S T R	

01-04-00
AT 2:00 O'CLOCK P.M.
LINES 9 PAGE 165
Walter C. Thomas
COUNTY CLERK OF DEEDS
Register of Deeds Stamp & File Number

- L-03 [N1/4 COR SEC 12] C-6/7 [MC SEC'S 18/17 REF. MON.]
4. Lot No. _____, Recorded Plat _____
5. Private Claims _____

I, M.P. DAVIS, in a field survey on DECEMBER, 1999 do hereby state that under requirements of P.A. 74, Michigan P.A. of 1970, the corner points mentioned in lines 1 and 2 above were in conformance with regulations and rules therefore as required in the current manual of survey instructions of the United States Department of the Interior, Bureau of Land Management or by a decree of a Court of Law and for that the corner points mentioned in lines 3, 4 and 5 above were in conformance with the rules of the Michigan Board of Land Surveyors or by a Decree of a Court of Law, established, re-established, monumented, recovered, found as expressed below:

NOTE: Not more than 2 corners, all in the same town and range, may be recorded on this certificate.

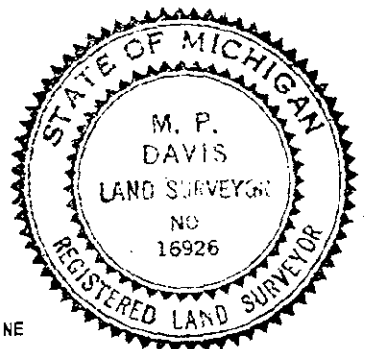


A. Description of original monument and accessories and/or subsequent restoration:

- L-03 [N1/4 COR SEC 12] A.MERRYWEATHER, D.S.-1848-WOOD POST (HEMLOCK 14" S21°E 09 LINKS)(BEECH 04" N15°W 15 LINKS) M.S.McNABB-1931-AET CORNER "1/2" DISTANCE BETWEEN CORNERS (BALSAM 8" S35°W 41.5')(CEDAR STUMP 9" N85°E 23.5') JOE KAPELCZAK-JCK ASSOCIATES-NOVI, MICHIGAN-1999-SET T-IRON AT MIDPOINT AND ON LINE WITH SECTION CORNERS 1/2 MILE EAST & WEST (CEDAR GATE POST NORTH 13.52')(MAPLE 30" N65°E 50.24')(MAPLE 10" SOUTH 24.0')(MAPLE 18" WEST 51.24') UNRECORDED
- C-6/7 [MC SEC'S 18/17 REF. MON.] A.MERRYWEATHER, D.S.-1848- WOOD POST (WILLOW 12" S76°W 27 LINKS)(B.ASH 08" S63°E 190 LINKS) NO RECORD EVIDENCE OF CORNER RECOVERY AND/OR SUBSEQUENT MONUMENTATION.

B. Description of corner evidence found and/or method applied in restoring or reestablishing corner:

- L-03 [N1/4 COR SEC 12] FOUND IN PLACE A T-IRON AND BT'S AS LISTED ABOVE. CORNER MONUMENT CHECKS FOR MIDPOINT BETWEEN AND ON LINE WITH SECTION CORNERS 1/2 MILE EAST AND WEST. ACCEPTED EXISTING MONUMENT AS BEING A CAREFUL & FAITHFUL REESTABLISHMENT OF THE POSITION OF THE ORIGINAL CORNER.
- C-6/7 [MC SEC'S 18/17 REF. MON.] NO CORNER EVIDENCE FOUND. FROM PREVIOUS VISITS TO THIS AREA, ID THE LINE NORTH FROM THE SECTION CORNER BY AN ANCIENT FARM FENCE, AS LONG RECOGNIZED BY ADJOINING OWNERS AS BEING THE PROPERTY LINE. AS THE FENCE LINE ONLY DEVIATES FROM A STRAIGHT LINE BETWEEN SECTION CORNERS BY 3.27' TO THE EAST AT THE LAKE SHORE, PLACED THE MC (REF. MON) ON THE FENCE LINE EXTENDED AND SET IT AT THE EDGE OF THE UPLAND VEGETATION.



C. Description of monument for corner and accessories established to perpetuate locating the position of the corner:

- L-03 SET, OVER THE EXISTING MONUMENT, A BERNTSEN A1NB30 ALUM MONUMENT WITH THE CAP STAMPED TO ID THE CORNER POSITION.
- | | | | |
|-----------|-----------|-----------|-----------|
| MAPLE 17" | MAPLE 07" | MAPLE 10" | MAPLE 10" |
| N46°W | N48°E | S04°W | S55°W |
| 69.07' | 37.46' | 24.00' | 30.50' |
- C-6/7 SET A 5/8" X 18" REBAR W/A 3-1/4" ALUM CAP STAMPED TO ID THE CORNER POSITION.
- | | | | |
|---------|---------|------------|------------------------|
| ASH 04" | ASH 10" | WILLOW 10" | WATERS EDGE (12/20/99) |
| S22°W | S48°E | EAST | NORTH |
| 28.13' | 51.97' | 32.02' | 15'± |

NOTE: BEARINGS TO REFERENCE OBJECTS ARE MAGNETIC-DISTANCES ARE TO A NAIL W/A DELTA COUNTY REFERENCE TAG, UNLESS OTHERWISE NOTED.

Signed by M.P. Davis
Surveyor's Michigan License No. 16926

Date 12/27/99