

STATE OF MICHIGAN  
DEPARTMENT  
OF  
NATURAL RESOURCES  
LAND CORNER RECORD

Delta COUNTY

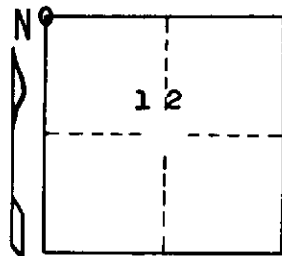
T 39 N R 18 W

DESCRIPTION OF CORNER Section corner for sections  $\frac{2}{1}$   $\frac{11}{12}$

CORNER MONUMENT 1" iron pipe with 4" aluminum cap

DATE MONUMENT PLACED AND WITNESSED 6/5/70, F. J. Bray

WITNESSES TO CORNER..... McNabb's cedar stump (BT) S 57° W, 16.2'



7" Cedar (S.2) (NBT) N 50° W, 13.5'

4" Cedar (S.12) (NBT) S 14° E, 9.3'

AND

CIRCLE CORNER REGISTERED

DESCRIPTION IN DETAIL AS TO HOW CORNER WAS LOCATED AND IDENTIFIED OR RESTORED.

This corner was replaced from M. McNabbs NBT's. Found point of rotted post.  
McNabb stated he found original evidence in 1931 chopped on cedar to the SW.

SURVEYOR'S SEAL

DISTRIBUTION:

SIGNED

Frank J. Bray  
REGISTERED LAND SURVEYOR  
Frank J. Bray

DATE 6/24/70

County Courthouse  
Area Forester (Regions I & II)  
District or Region Surveyor  
Forestry Div., Lansing

R 4047  
Rev. 10/68