

STATE OF MICHIGAN
DEPARTMENT
OF
NATURAL RESOURCES
LAND CORNER RECORD

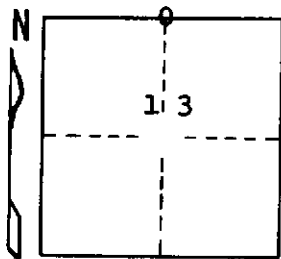
Delta COUNTY
T 39 N R 18 W

DESCRIPTION OF CORNER 1/4 corner for sections ¹²/₁₃

CORNER MONUMENT 1" iron rod with washer for cap at ground level

DATE MONUMENT PLACED AND WITNESSED 6/4/70, F. J. Bray

WITNESSES TO CORNER..... Fence corner, S 88° E, 33.0'



12" H. Maple (NBT) S 35° W, 41.5'

10" H. Maple (NBT) S 55° E, 36.8'

AND

CIRCLE CORNER REGISTERED

DESCRIPTION IN DETAIL AS TO HOW CORNER WAS LOCATED AND IDENTIFIED OR RESTORED.

This corner was rewitnessed as set by Marcus McNabb, County Surveyor, in 1931.
Corner at intersection of road to north and to west.

SURVEYOR'S SEAL

DISTRIBUTION:

SIGNED Frank J. Bray DATE 6/24/70
REGISTERED LAND SURVEYOR
Frank J. Bray

County Courthouse
Area Forester (Regions I & II)
District or Region Surveyor
Forestry Div., Lansing

R 4047
Rev. 10/68