

STATE OF MICHIGAN  
DEPARTMENT  
OF  
NATURAL RESOURCES

LAND CORNER RECORD

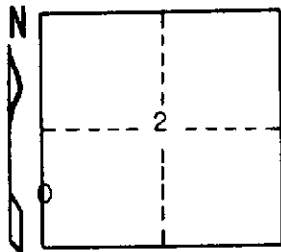
DELTA COUNTY  
T 39 N R 18 W

DESCRIPTION OF CORNER South 1/16 corner for Sections 3/2

CORNER MONUMENT 1" pipe with 4" aluminum cap

DATE MONUMENT PLACED AND WITNESSED November 24, 1971

WITNESSES TO CORNER..... 5" Cedar (S1/16) (BT) N26°E, 22.8'



5" Cedar (S1/16) (BT) N47°W, 15.2'

AND

CIRCLE CORNER REGISTERED

DESCRIPTION IN DETAIL AS TO HOW CORNER WAS LOCATED AND IDENTIFIED OR RESTORED.

This corner was set mid-point and on line between the section corner to the south and the 1/4 corner to the north.

SURVEYOR'S SEAL

DISTRIBUTION:

SIGNED Frank J. Bray  
REGISTERED LAND SURVEYOR  
Frank J. Bray

DATE 1-7-72

County Courthouse  
Area Forester (Regions I & II)  
District or Region Surveyor  
Forestry Div., Lansing

R 4047  
Rev. 10/68