

JAN 23 2000

SECTION

LAND CORNER RECORDATION CERTIFICATE
Filing Requirement of Act 74, Mich. P.A. 1970

Approved By Delta County
Land Survey Remonumentation
Peer Group Under Act 345 Of
P.A. Of 1990 On Dec 28, 1999

Chairman

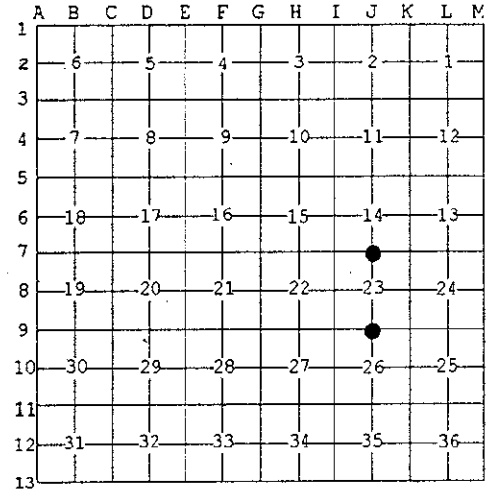
For corners in

Table with columns: DELTA (County), Located In:, Corner Code #. Rows include Public Land Survey, Property Controlling in Section, and Miscellaneous Property in Sec.

Register of Deeds Stamp & File Number. Includes handwritten file number 01-04-00, time 2:00 O'CLOCK PM, page 9, and page number 175.

4. Lot No. Recorded Plat
5. Private Claims

I, M.P. DAVIS, in a field survey on DECEMBER, 19 99 do hereby state that under requirements of P.A. 74, Michigan P.A. of 1970, the corner points mentioned in lines 1 and 2 above were in conformance with regulations and rules...



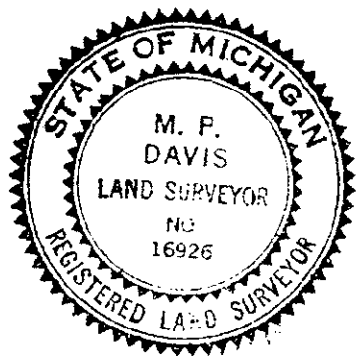
NOTE: Not more than 2 corners, all in the same town and range, may be recorded on this certificate.

A. Description of original monument and accessories and/or subsequent restoration:

- J-07 [N1/4 COR SEC 23] A.MERRYWEATHER, D.S.-1848-WOOD POST (CEDAR 08" NORTH 03 LINKS)(SUGAR 08" SOUTH 03 LINKS)
J-09 [N1/4 COR SEC 26] A.MERRYWEATHER, D.S.-1848-WOOD POST (BALSAM 06" N65°W 28 LINKS)(SUGAR 25" S58°E 26 LINKS)

B. Description of corner evidence found and/or method applied in restoring or reestablishing corner:

- J-07 [N1/4 COR SEC 23] FOUND IN PLACE A 1/2" REBAR W/A ID CAP - ID CORNER MONUMENT FROM BOWMAN'S BT'S REC'D AT LIBER 6 OF LCR'S PG 84A ALL STILL VIABLE.
J-09 [N/4 COR SEC 26] NO CORNER EVIDENCE FOUND. EXTENDED LINE NORTH FROM THE S1/4 COR OF SEC 26 THRU T.O'BRIEN'S C1/4 COR.



C. Description of monument for corner and accessories established to perpetuate locating the position of the corner:

- J-07 REPLACED EXISTING MONUMENT, W/A 5/8" X 18" REBAR W/A 3-1/4" ALUM CAP STAMPED TO ID THE CORNER POSITION.
J-09 SET A 5/8" X 18" REBAR W/A 3-1/4" ALUM CAP STAMPED TO ID THE CORNER POSITION.

NOTE: BEARINGS TO REFERENCE OBJECTS ARE MAGNETIC-DISTANCES ARE TO A NAIL W/A DELTA COUNTY REFERENCE TAG, UNLESS OTHERWISE NOTED.

Signed by M.P. DAVIS Date 12/28/99
Surveyor's Michigan License No. 16926