

SURVEY & REMONUMENTATION

SEP 13 1994

COMMISSION

Approved By Delta County
Land Survey Remonumentation
Peer Group Under Act 345 Of
P.A. Of 1990 On June 8, 1994

Walter C. Thron
Chairman

LAND CORNER RECORDATION CERTIFICATE
Filing Requirement of Act 74, Mich. P.A. 1970

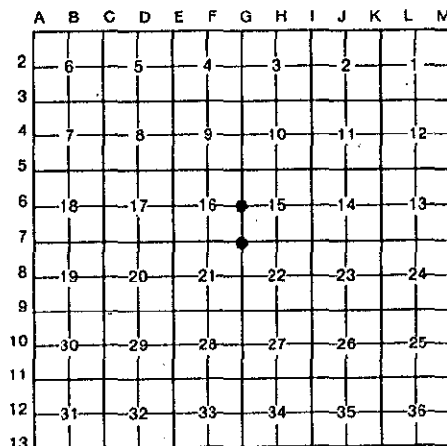
For corners in
DELTA

(County)	Located In:	Corner Code #
1. Public Land Survey	T 39 N R 24 W	G-6 & G-7
	T _____ R _____	
	T _____ R _____	
	T _____ R _____	
2. Property Controlling in Section	S _____ T _____ R _____	
	S _____ T _____ R _____	
3. Miscellaneous Property in Sec.	S _____ T _____ R _____	
	S _____ T _____ R _____	

Recorded JUN -9 1994
at 9:00 clock AM in Liber 8 Page 15
Walter C. Thron
Reg. of Deeds.
Delta County, Michigan
Register of Deeds Stamp & File Number

4. Lot No. _____, Recorded Plat _____
5. Private Claims G-6 [W1/4 COR S.15] G-7 [NW COR S.22]

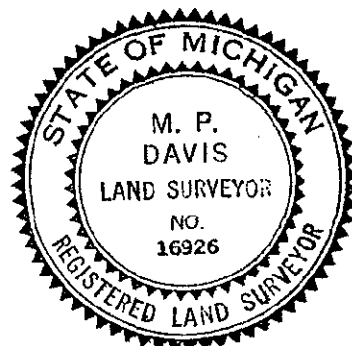
I, H.P. DAVIS, in a field survey on MAY/JUNE, 19 94, do hereby certify that under requirements of P.A. 74, Michigan P.A. of 1970, the corner points mentioned in lines 1 and 2 above were in conformance with regulations and rules therefore as required in the current manual of survey instructions of the United States Department of the Interior, Bureau of Land Management or by a decree of a Court of Law and/or that the corner points mentioned in lines 3, 4 and 5 above were in conformance with the rules of the Michigan Board of Land Surveyors or by a Decree of a Court of Law; established, re-established, monumented, re-monumented, recovered, found as expressed below:



NOTE: Not more than 4 corners, all in the same town and range, may be recorded on this certificate.

- A. Description of original monument and accessories and/or subsequent restoration:
 G-6 [W1/4 COR S.15] GEORGE ADAIR, D.S. - 1852 - WOOD POST (HEMLOCK 10°-N48°W-22 LINKS) (FIR 08°-S31°E 12 LINKS)
 M.S. McNABB - 1920 - ID CORNER POSITION FROM "GLO HEMLOCK BT" - SET IRON STAKE - NO BT'S NOTED.
 G-7 [NW COR S.22] GEORGE ADAIR, D.S. - 1852 - WOOD POST (CEDAR 15°-N61°E-23 LINKS) (SPRUCE 14°-S70°W-28 LINKS)
 D.A. BROTHERTON - 1896 - IDENTIFIED FROM ORIGINALS - SET IRON STAKE - NEW BT NOTED (CEDAR 14°-S2°50'W-42.9')

- B. Description of corner evidence found and/or method applied in restoring or reestablishing corner:
 G-6 [W1/4 COR S.15] FOUND IN PLACE AS INDICATED BY OCCUPATION & ROAD IMPROVEMENTS A CHISELED CROSS ON A LARGE STONE SET OVER AN IRON BOLT, 36" M/L BELOW COUNTY ROAD SURFACE. NO OTHER EVIDENCE EXIST, DISTANCES TO COR'S N & S CK WITHIN ACCEPTABLE LIMITS AS TO "GLO REC'D". ACCEPTED EXISTING MONUMENT AS BEING A CAREFUL & FAITHFUL PERPETUATION OF THE POSITION OF THE ORIGINAL CORNER.
 G-7 [NW COR S.22] FOUND IRON BOLT IN PLACE AS SET FROM ORIGINALS BY BROTHERTON IN 1896. IDENTIFIED CORNER POSITION FROM REMAINS OF BROTHERTON'S CEDAR BT, SCRIBE MARKS PLAIN. ACCEPTED EXISTING MONUMENT AS BEING A CAREFUL & FAITHFUL PERPETUATION OF THE POSITION OF THE ORIGINAL CORNER.



- C. Description of monument for corner and accessories established to perpetuate locating the position of the corner:
 G-6 SET, OVER EXISTING MON & 6" BELOW RD SURFACE A 5/8" X 18" REBAR W/A 3-1/4" ALUMN CAP STAMPED TO ID THE CORNER POSITION.
 SPRUCE 10" DRILL HOLE IN LARGE STONE SURVEY MONUMENT SIGN POST NOTE: NO OTHER WIT'S AVAILABLE. AREA IS SURROUND BY FARM FIELDS. CORNER IS IN LINE WITH ANCIENT FENCE LINE TO THE EAST
 S77°W S31°E EAST
 51.92' 44.58' 16.77' (TO FACE)
 G-7 SET OVER EXISTING MON & 6" M/L BELOW RD SURFACE A 5/8" X 18" REBAR W/A 3-1/4" ALUMN CAP STAMPED TO ID THE CORNER POSITION.
 ASH 6" W. BIRCH 13" SPRUCE 13" POWER POLE SURVEY MONUMENT SIGN POST
 N50°E S23°E S21°W N68°W EAST
 54.77' 53.60' 37.40' 55.21' (TO FACE) 2.15' (TO FACE)

NOTE: BEARINGS TO REFERENCE OBJECTS ARE MAGNETIC & DISTANCES ARE TO A NAIL W/A REFERENCE TAG IN THE OBJECT, UNLESS OTHERWISE NOTED.

Signed by M.P. Davis Date 6/7/94
 Surveyor's Michigan License No. 16926