

STATE OF MICHIGAN
DEPARTMENT
OF
NATURAL RESOURCES

LAND CORNER RECORD

Delta COUNTY

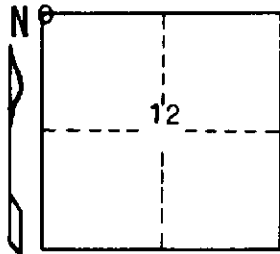
T 40 N R 18 W

DESCRIPTION OF CORNER Section corner for sections $\frac{2}{1}$ 11/12

CORNER MONUMENT 1" iron pipe with 4" aluminum cap

DATE MONUMENT PLACED AND WITNESSED 11/16/70 F. J. Bray with F. Finlay

WITNESSES TO CORNER..... 8" R. Maple (S. 2) (NBT) N 07° W, 17.2'



9" R. Maple (twin) (S. 11) (NBT) S 21° W, 31.3'

AND

CIRCLE CORNER REGISTERED

DESCRIPTION IN DETAIL AS TO HOW CORNER WAS LOCATED AND IDENTIFIED OR RESTORED.

This corner was placed the proportioned distance between section corners 1 mile to east and to west and to land calls to north and to south. No original evidence found.

SURVEYOR'S SEAL

SIGNED

Frank J. Bray
REGISTERED LAND SURVEYOR
Frank J. Bray

DATE

12-8-70

DISTRIBUTION:

County Courthouse
Area Forester (Regions I & II)
District or Region Surveyor
Forestry Div., Lansing

R 4047
Rev. 10/68