

STATE OF MICHIGAN  
DEPARTMENT  
OF  
NATURAL RESOURCES



LAND CORNER RECORD

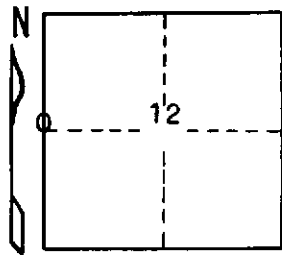
Delta COUNTY  
T 40 N R 18 W

DESCRIPTION OF CORNER ¼ corner for sections 11/12

CORNER MONUMENT 1" iron pipe with 4" aluminum cap

DATE MONUMENT PLACED AND WITNESSED 11/18/70 F. J. Bray with F. Finlay

WITNESSES TO CORNER..... 7" R. Pine (¼ S) (NBT) N 83° W, 31.5'



5" R. Maple (twin) (¼ S) (NBT) N 34° E, 4.8'

AND

CIRCLE CORNER REGISTERED

DESCRIPTION IN DETAIL AS TO HOW CORNER WAS LOCATED AND IDENTIFIED OR RESTORED.

This corner was placed midway and on line between section corners ½ mile to north and to south. Blazes on trees in vicinity.

SURVEYOR'S SEAL

DISTRIBUTION:

SIGNED

Frank J. Bray  
REGISTERED LAND SURVEYOR  
Frank J. Bray

DATE

12-7-70

County Courthouse  
Area Forester (Regions I & II)  
District or Region Surveyor  
Forestry Div., Lansing

R 4047  
Rev. 10/68