

STATE OF MICHIGAN
DEPARTMENT
OF
NATURAL RESOURCES

LAND CORNER RECORD

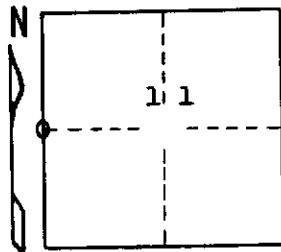
Delta COUNTY
T 40 N R 18 W

DESCRIPTION OF CORNER 1/4 corner for sections 10/11

CORNER MONUMENT 1" iron pipe with 4" aluminum cap

DATE MONUMENT PLACED AND WITNESSED 9/29/70, F. J. Bray with McDonald and Finley

WITNESSES TO CORNER..... 12" W. Birch (1/4 S) (NBT) N 28° E, 14.2'



7" S. Maple (in clump) (1/4 S) (NBT) N 15° W, 27.2'

AND

CIRCLE CORNER REGISTERED

DESCRIPTION IN DETAIL AS TO HOW CORNER WAS LOCATED AND IDENTIFIED OR RESTORED.

This corner was placed midway and on line between section corners to the north and to the south. No original evidence found.

SURVEYOR'S SEAL

DISTRIBUTION:

SIGNED

Frank J. Bray
REGISTERED LAND SURVEYOR
Frank J. Bray

DATE 11/5/70

County Courthouse
Area Forester (Regions I & II)
District or Region Surveyor
Forestry Div., Lansing

R 4047
Rev. 10/68