

STATE OF MICHIGAN
DEPARTMENT
OF
NATURAL RESOURCES

LAND CORNER RECORD

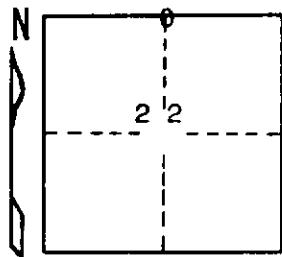
Delta COUNTY
T 40 N R 18 W

DESCRIPTION OF CORNER 1/4 corner for sections ¹⁵ 22

CORNER MONUMENT 1" iron pipe with 4" aluminum cap

DATE MONUMENT PLACED AND WITNESSED 8/28/70, F. J. Bray

WITNESSES TO CORNER..... 6" R. Maple (in clump) (1/4 S) (NBT) N 82° W, 20.6'



6" J. Pine (1/4 S) (NBT) S 84° E, 39.5'

AND

CIRCLE CORNER REGISTERED

DESCRIPTION IN DETAIL AS TO HOW CORNER WAS LOCATED AND IDENTIFIED OR RESTORED.

This corner was placed midway and on line between section corners to the east and west. No original evidence found. Blazed stump facing corner near.

SURVEYOR'S SEAL

DISTRIBUTION:

SIGNED Frank J. Bray DATE 11/5/70
REGISTERED LAND SURVEYOR

County Courthouse
Area Forester (Regions I & II)
District or Region Surveyor
Forestry Div., Lansing

R 4047
Rev. 10/68