

STATE OF MICHIGAN
DEPARTMENT
OF
NATURAL RESOURCES

LAND CORNER RECORD

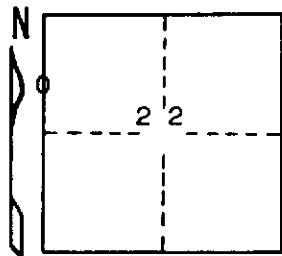
Delta COUNTY
T 40 N R 18 W

DESCRIPTION OF CORNER N 1/16 corner for sections 21/22

CORNER MONUMENT 1" iron pipe with 4" aluminum cap

DATE MONUMENT PLACED AND WITNESSED 8/7/70, F. J. Bray

WITNESSES TO CORNER..... 5" J. Pine (N 1/16) (BT) S 89° W, 23.0'



10" R. Oak (N 1/16) (BT) S 08° E, 12.5'

AND

CIRCLE CORNER REGISTERED

DESCRIPTION IN DETAIL AS TO HOW CORNER WAS LOCATED AND IDENTIFIED OR RESTORED.

This corner was placed midway and on line between section corner to the north and 1/4 corner to the south.

SURVEYOR'S SEAL

DISTRIBUTION:

SIGNED

Frank J. Bray
REGISTERED LAND SURVEYOR

DATE

11/6/70

Frank J. Bray

County Courthouse
Area Forester (Regions I & II)
District or Region Surveyor
Forestry Div., Lansing

R 4047
Rev. 10/68