

STATE OF MICHIGAN
DEPARTMENT
OF
NATURAL RESOURCES

LAND CORNER RECORD

Delta COUNTY

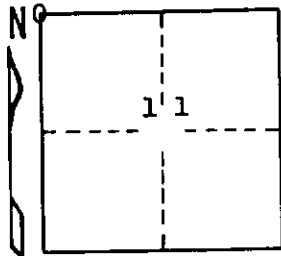
T 40 N R 18 W

DESCRIPTION OF CORNER Section corner for sections ^{3/2} 10/11

CORNER MONUMENT 1" iron pipe with 4" aluminum cap

DATE MONUMENT PLACED AND WITNESSED 8/12/70, F. J. Bray

WITNESSES TO CORNER..... 9" R. Maple (S. 3) (NBT) N 70° W, 8.8'



6" R. Maple (S. 11) (NBT) S 41° E, 29.3'

AND

CIRCLE CORNER REGISTERED

DESCRIPTION IN DETAIL AS TO HOW CORNER WAS LOCATED AND IDENTIFIED OR RESTORED.

This corner was replaced from rotted hemlock stump to the NE with scribe marks visible in the overgrowth and rotted hemlock stump bottom to the SW. Both rotted stumps check with original notes for bearings and distances.

SURVEYOR'S SEAL

SIGNED

Frank J. Bray
REGISTERED LAND SURVEYOR

DATE 11/12/70

DISTRIBUTION:

County Courthouse
Area Forester (Regions I & II)
District or Region Surveyor
Forestry Div., Lansing

R 4047
Rev. 10/68