

STATE OF MICHIGAN
DEPARTMENT
OF
NATURAL RESOURCES

LAND CORNER RECORD

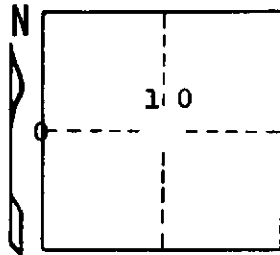
Delta COUNTY
T 40 N R 18 W

DESCRIPTION OF CORNER 1/4 corner for sections 9/10

CORNER MONUMENT 4" brass cap on concrete post

DATE MONUMENT PLACED AND WITNESSED 7/10/70, F. J. Bray

WITNESSES TO CORNER..... 5" Cedar (1/4 S) (NBT) N 56° W, 16.1'



8" Cedar (1/4 S) (NBT) N 77° E, 16.6'

AND

CIRCLE CORNER REGISTERED

DESCRIPTION IN DETAIL AS TO HOW CORNER WAS LOCATED AND IDENTIFIED OR RESTORED.

This corner was re-witnessed as set by G. A. Shadko, R.L.S. Corner found while making retracement survey.

SURVEYOR'S SEAL

DISTRIBUTION:

SIGNED

Frank J. Bray
REGISTERED LAND SURVEYOR
Frank J. Bray

DATE

11/12/70

County Courthouse
Area Forester (Regions I & II)
District or Region Surveyor
Forestry Div., Lansing

R 4047
Rev. 10/68