

STATE OF MICHIGAN  
DEPARTMENT  
OF  
NATURAL RESOURCES

LAND CORNER RECORD

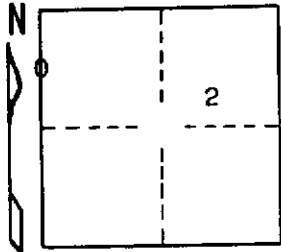
Delta COUNTY  
T 40 N R 18 W

DESCRIPTION OF CORNER N 1/16 corner for section 3/2

CORNER MONUMENT 1" iron pipe with 4" aluminum cap

DATE MONUMENT PLACED AND WITNESSED 8/13/70, F. J. Bray

WITNESSES TO CORNER..... 8" Basswood (in clump) (N 1/16) (BT) N 23° W, 32.8'



5" H. Maple (N 1/16) (BT) S 27° W, 23.8'

AND

CIRCLE CORNER REGISTERED

DESCRIPTION IN DETAIL AS TO HOW CORNER WAS LOCATED AND IDENTIFIED OR RESTORED.

This corner was placed on line and the single proportioned distance between the section corner to the north and 1/4 corner to the south.

SURVEYOR'S SEAL

DISTRIBUTION:

SIGNED

Frank J. Bray  
REGISTERED LAND SURVEYOR  
Frank J. Bray

DATE 11/12/70

County Courthouse  
Area Forester (Regions I & II)  
District or Region Surveyor  
Forestry Div., Lansing

R 4047  
Rev. 10/68