

STATE OF MICHIGAN
DEPARTMENT
OF
NATURAL RESOURCES

LAND CORNER RECORD

Delta COUNTY

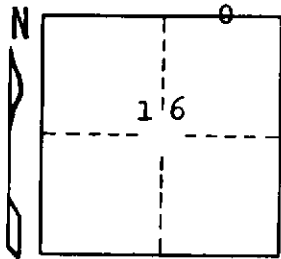
T 40 N R 18 W

DESCRIPTION OF CORNER E 1/16 corner for sections $\frac{9}{16}$

CORNER MONUMENT 4" Brass cap on concrete post

DATE MONUMENT PLACED AND WITNESSED 7/10/70, F.J. Bray

WITNESSES TO CORNER..... 10" R. Oak, N 38° W, 18.7'



12" R. Pine, S 66° W, 29.2'

11" R. Oak, S 17° E, 13.6'

AND

CIRCLE CORNER REGISTERED

DESCRIPTION IN DETAIL AS TO HOW CORNER WAS LOCATED AND IDENTIFIED OR RESTORED.

This corner was rewitnessed as set by G. A. Shadko, R.L.S. Corner found while making a retracement survey.

SURVEYOR'S SEAL

DISTRIBUTION:

SIGNED

Frank J. Bray
REGISTERED LAND SURVEYOR

DATE

11/12/70

Frank J. Bray

County Courthouse
Area Forester (Regions I & II)
District or Region Surveyor
Forestry Div., Lansing

R 4047
Rev. 10/68