

ALPHA A

SURVEY & REMONUMENTATION

FEB 02 1999

SECTION

LAND CORNER RECORDATION CERTIFICATE Filing Requirement of Act 74, Mich. P.A. 1970

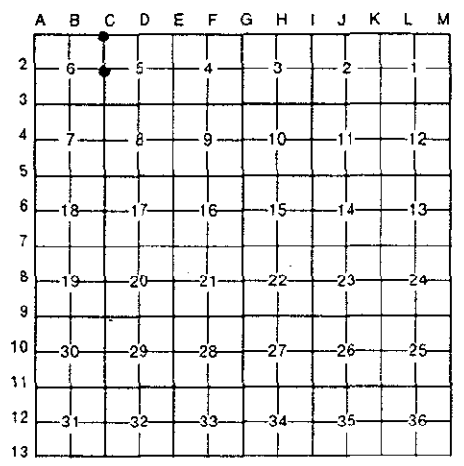
Approved By Delta County
Land Survey Remonumentation
Peer Group Under Act 345 Of
P.A. Of 1990 On December 30, 1998
Robert A. ...
Acting Chairman

For corners in DELTA (County)	Located In:	Corner Code ##
1. Public Land Survey	T 40 N R 19 W	C - 1 ✓
	T 40 N R 19 W	C - 2
	T _____ R _____	_____
	T _____ R _____	_____
2. Property Controlling in Section	S _____ T _____ R _____	_____
	S _____ T _____ R _____	_____
3. Miscellaneous Property in Sec.	S _____ T _____ R _____	_____
	S _____ T _____ R _____	_____

Recorded Jan 4 1999
3:40 PM
L 9 P 113
William C. Thomas
County Clerk Michigan

Register of Deeds Stamp & File Number

4. Lot No. _____, Recorded Plat _____
5. Private Claims C-1 [NW COR SEC 5] C-2 [W1/4 COR SEC 5]



I, M.P. DAVIS, in a field survey on JULY/DECEMBER, 19 98, do hereby certify that under requirements of P.A. 74, Michigan P.A. of 1970, the corner points mentioned in lines 1 and 2 above were in conformance with regulations and rules therefore as required in the current manual of survey instructions of the United States Department of the Interior, Bureau of Land Management or by a decree of a Court of Law and/or that the corner points mentioned in lines 3, 4 and 5 above were in conformance with the rules of the Michigan Board of Land Surveyors or by a Decree of a Court of Law; established, re-established, monumented, re-monumented, recovered, found as expressed below:

NOTE: Not more than 4 corners, all in the same town and range, may be recorded on this certificate.

- A. Description of original monument and accessories and/or subsequent restoration:
- C-1 [NW COR SEC. 5] A.MERRYWEATHER, DS - 1848 - WOOD POST - (NORWAY PINE 18° S36°E 134 LINKS) NO RECORD OF SUBSEQUENT CORNER RECOVERY AND/OR MONUMENTATION
 - C-2 [W1/4 COR SEC 5] A.MERRYWEATHER, D.S. - 1848 - (CEDAR 05° SOUTH 03 LINKS) (BIRCH 08°-N20°W-15 LINKS) NO RECORD EVIDENCE OF SUBSEQUENT CORNER RECOVERY AND/OR RESTORATION

- B. Description of corner evidence found and/or method applied in restoring or reestablishing corner:
- C-1 [NW COR SEC. 5] NO ACCEPTABLE CORNER EVIDENCE FOUND. REESTABLISHED CORNER POSITION ON FOURTH CORRECTION LINE NORTH & AT PROPORTIONATE POSITION EAST OF THE S1/4 COR OF SEC 33 T41N R19W. THIS POSITION FALLS 25.28' SOUTH & 69.72' WEST OF AN UNMARKED 3" WOOD POST AS IDENTIFIED BY TWO EXISTING BEARING TREES, A W. BIRCH NE, STILL GREEN & A R.PINE SE, DOWN. UPPER & LOWER BLAZES VISIBLE ON BOTH BT'S. UNABLE TO DETERMINE THE ORIGIN OF THE EXISTING WOOD POST MONUMENT.
 - C-2 [W1/4 COR SEC 5] NO CORNER EVIDENCE FOUND. REESTABLISHED CORNER POSITION ON LINE WITH AND AT PROPORTIONATE DISTANCE BETWEEN SEC CORNERS 1/2 MILE NORTH & SOUTH



- C. Description of monument for corner and accessories established to perpetuate locating the position of the corner:
- C-1 SET BERNTSEN ALNB30 ALUM MONUMENT W/A 3 1/4" CAP STAMPED TO ID THE CORNER POSITION.
TAMARACK 08" R. PINE 16" SURVEY MONUMENT SIGN POST NOTE: IN OPEN MARSH NO OTHER
N71°E S34°E NORTH WIT'S AVAILABLE
112.75' 111.55' 2.30' (TO FACE)
 - C-2 SET BERNTSEN ALNB30 ALUMN MON. W/A 3 1/4" CAP STAMPED TO ID THE CORNER POSITION.
CEDAR 06" CEDAR 05" CEDAR 06" CEDAR 04" SURVEY MONUMENT SIGN POST
N63°E S68°E S24°W N52°W NORTH
13.56' 13.30' 06.88' 18.88' 1.37' (TO FACE)

NOTE: BEARINGS TO REFERENCE OBJECTS ARE MAGNETIC-DISTANCES ARE TO A NAIL W/A DELTA COUNTY REFERENCE TAG, UNLESS OTHERWISE NOTED.

Signed by M.P. Davis Date 12/29/98

Surveyor's Michigan License No. 16926