

FEB 02 1999

SECTION

LAND CORNER RECORDATION CERTIFICATE
Filing Requirement of Act 74, Mich. P.A. 1970

Approved By Delta County Land Survey Remonumentation Peer Group Under Act 345 Of P.A. Of 1990 On January 30, 1998
Chairman

For corners in DELTA (County)

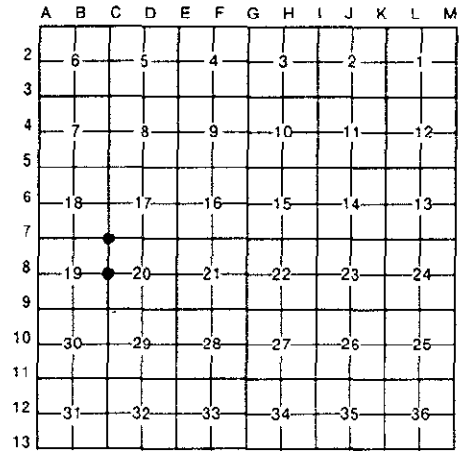
Located In: Corner Code #

Table with 3 columns: Survey Type, Located In, Corner Code. Includes rows for Public Land Survey, Property Controlling in Section, and Miscellaneous Property in Sec.

Recorded Jan 4 1999 at 3:40 PM Lib 9 Page 118
Walter C. Thomas Delta County, MI Sec. of Deeds

Register of Deeds Stamp & File Number

4. Lot No. , Recorded Plat
5. Private Claims C-7 [NW COR SEC 20] C-8 [W1/4 COR SEC 20]



I, M.P. DAVIS, in a field survey on DECEMBER, 19 98, do hereby certify that under requirements of P.A. 74, Michigan P.A. of 1970, the corner points mentioned in lines 1 and 2 above were in conformance with regulations and rules therefore as required in the current manual of survey instructions of the United States Department of the Interior, Bureau of Land Management or by a decree of a Court of Law and/or that the corner points mentioned in lines 3, 4 and 5 above were in conformance with the rules of the Michigan Board of Land Surveyors or by a Decree of a Court of Law; established, re-established, monumented, re-monumented, recovered, found as expressed below:

NOTE: Not more than 4 corners, all in the same town and range, may be recorded on this certificate.

A. Description of original monument and accessories and/or subsequent restoration:

C-7 [NW COR SEC. 20] A.MERRYWEATHER, DS - 1848 - WOOD POST - (CEDAR 08" N20°W 140 LINKS)(CEDAR 08" S15°E 160 LINKS) NO RECORD OF SUBSEQUENT CORNER RECOVERY AND/OR MONUMENTATION

C-8 [W1/4 COR SEC 20] A.MERRYWEATHER, D.S. - 1848 - (TAMARACK 03" N19°W 30 LINKS) (WILLOW 02"-S10°E-23 LINKS) NO RECORD OF SUBSEQUENT CORNER RECOVERY AND/OR MONUMENTATION

B. Description of corner evidence found and/or method applied in restoring or reestablishing corner:

C-7 [NW COR SEC. 20] NO CORNER EVIDENCE FOUND. REESTABLISHED CORNER POSITION BY SINGLE PROPORTIONATE DISTANCE BETWEEN SECTION CORNERS 1 MILE EAST & 1 MILE WEST. IN THAT T40N R19W IS A FRACTIONAL TOWNSHIP DUE TO LAKE MICHIGAN AND NO FURTHER CONTROL WAS RECOVERED TO THE SOUTH IT WAS DECIDED BY THE DELTA COUNTY PEER GROUP THAT THE ABOVE DESCRIBED METHOD WOULD BE EMPLOYED IN THE RESTORATION OF THIS CORNER POSITION

C-8 [W1/4 COR SEC 20] NO CORNER EVIDENCE FOUND. IN THAT T40N R19W IS A FRACTIONAL TOWNSHIP DUE TO LAKE MICHIGAN AND NO FURTHER CONTROL TO THE SOUTH WAS RECOVERED, A LINE ON A MEAN BEARING OF THE WEST LINE OF SECTION 19 AND THE EAST LINE OF SECTION 20 WAS RUN SOUTH FROM THE NW CORNER OF SEC 20 AND THE CORNER WAS PLACED ON THIS LINE AT THE "GLO" DISTANCE OF 2640.0' SOUTH OF THE SEC CORNER.



C. Description of monument for corner and accessories established to perpetuate locating the position of the corner:

C-7 SET BERNTSEN A1NB30 ALUM MONUMENT W/A 3 1/4" CAP STAMPED TO ID THE CORNER POSITION. SURVEY MONUMENT SIGN POST NORTH 1.32' (TO FACE) NOTE: THIS CORNER POSITION FALLS IN A WIDE OPEN MARSH. THERE ARE NO WITNESS TREES WITHIN SEVERAL HUNDRED FEET.

C-8 SET BERNTSEN A1NB30 ALUMN MON. W/A 3 1/4" CAP STAMPED TO ID THE CORNER POSITION. W.BIRCH 06" MAPLE 13" MAPLE 12" SURVEY MONUMENT SIGN POST EAST 1.64' (TO FACE) NOTE: NE & SE QUADRANTS ARE OPEN MARSH LAND S01°E 30.52' S25°W 05.07' N76°W 27.97'

NOTE: BEARINGS TO REFERENCE OBJECTS ARE MAGNETIC-DISTANCES ARE TO A NAIL W/A DELTA COUNTY REFERENCE TAG, UNLESS OTHERWISE NOTED.

Signed by M.P. Davis Date 12/28/98
Surveyor's Michigan License No. 16926