

**SURVEY & REMONUMENTATION**

FEB 02 1999

**SECTION**

**LAND CORNER RECORDATION CERTIFICATE**  
Filing Requirement of Act 74, Mich. P.A. 1970

Approved By Delta County  
Land Survey Remonumentation  
Peer Group Under Act 345 Of  
P.A. Of 1990 On December 30, 1998  
*Robert Delaney*  
Chairman

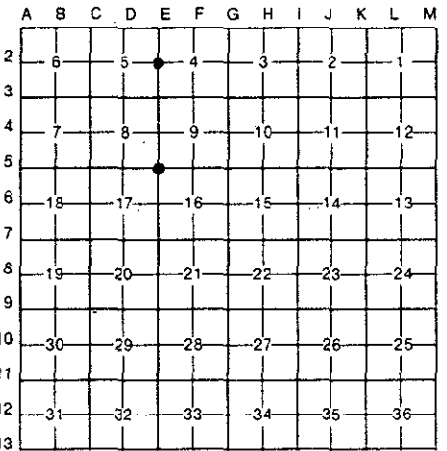
For corners in

<u>DELTA</u> (County)	Located In:	Corner Code #
1. Public Land Survey	T 40 N R 19 W	E - 2 ✓
	T 40 N R 19 W	E - 5
	T _____ R _____	_____
	T _____ R _____	_____
	T _____ R _____	_____
2. Property Controlling in Section	S _____ T _____ R _____	_____
	S _____ T _____ R _____	_____
3. Miscellaneous Property in Sec.	S _____ T _____ R _____	_____
	S _____ T _____ R _____	_____

Received Jan 4 1999  
3:40 P.M.  
Book 9 Page 110  
*William C. Thomas*  
Delta County, MI Reg. of Deeds

Register of Deeds Stamp & File Number

4. Lot No. \_\_\_\_\_, Recorded Plat \_\_\_\_\_  
5. Private Claims \_\_\_\_\_  
E-2 [W1/4 COR SEC 4] E-5 [NW COR SEC 16]



I, M. P. DAVIS, in a field survey on DECEMBER, 19 98, do hereby certify that under requirements of P.A. 74, Michigan P.A. of 1970, the corner points mentioned in lines 1 and 2 above were in conformance with regulations and rules therefore as required in the current manual of survey instructions of the United States Department of the Interior, Bureau of Land Management or by a decree of a Court of Law and/or that the corner points mentioned in lines 3, 4 and 5 above were in conformance with the rules of the Michigan Board of Land Surveyors or by a Decree of a Court of Law; established, re-established, monumented, re-monumented, recovered, found as expressed below:

**NOTE: Not more than 4 corners, all in the same town and range, may be recorded on this certificate.**

**A. Description of original monument and accessories and/or subsequent restoration:**

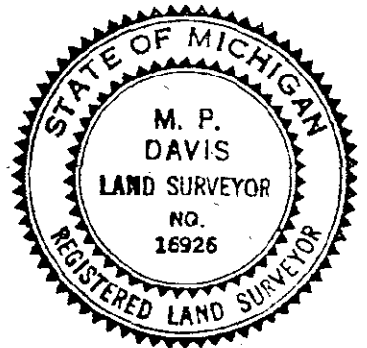
E-2 [W1/4 COR SEC. 4] A.MERRYWEATHER, D.S. - 1848 - WOOD POST (SPRUCE 04" - EAST-04 LINKS) (SPRUCE 06" - N40°W-09 LINKS)  
M.S. McNABB - 1913 - ID BY STAKE & OLD BT IN PLACE (SPRUCE 05" S62°W 23') (SPRUCE 04" S80°E 18.2')  
H.D.O.T. - 1973 - R/W PLANS SHOW CORNER IN PLACE NO WIT'S NOTED OR DESCRIPTION OF MONUMENT GIVEN

E-5 [NW COR SEC. 16] A.MERRYWEATHER, D.S. - 1848 - WOOD POST (TAMARACK 20" - N60°E-04 LINKS) (TAMARACK 08" - S44°W-29 LINKS)  
NO RECORD EVIDENCE OF SUBSEQUENT CORNER RECOVERY OR MONUMENTATION FOUND

**B. Description of corner evidence found and/or method applied in restoring or reestablishing corner:**

E-2 [W1/4 COR SEC. 4] NO CORNER EVIDENCE FOUND. RESTORED CORNER POSITION ON LINE WITH AND PROPORTIONATE DISTANCE BETWEEN THE SECTION CORNER 1/2 MILE SOUTH & THE M.C. AT MOSS LAKE TO THE NORTH.

E-5 [NW COR SEC. 16] NO CORNER EVIDENCE FOUND. RESTORED CORNER POSITION BY DOUBLE PROPORTIONATE MEASUREMENT BETWEEN SECTION CORNERS 1 MILE TO THE EAST - 2 MILES TO THE WEST - 1 MILE TO THE NORTH AND 1 MILE TO THE SOUTH.



**C. Description of monument for corner and accessories established to perpetuate locating the position of the corner:**

E-2 SET BERNTSEN A1NB30 ALUMN MON. W/A 3 1/4" CAP STAMPED TO ID THE CORNER POSITION.  
CEDAR 13" CEDAR 12" CEDAR 16" SURVEY MONUMENT SIGN POST  
N85°E S10°W S85°W NORTH  
32.10' 36.82' 26.75' 1.48' (TO FACE)

E-5 SET BERNTSEN A1NB30 ALUMN MON. W/A 3 1/4" CAP STAMPED TO ID THE CORNER POSITION.  
SPRUCE 10" SPRUCE 05" SPRUCE 04" SPRUCE 10" SURVEY MONUMENT SIGN POST  
N54°E S50°E S62°W N79°W NORTH  
30.88' 35.98' 40.19' 50.10' 1.37' (TO FACE)

NOTE: BEARINGS TO REFERENCE OBJECTS ARE MAGNETIC-DISTANCES ARE TO NAIL W/A DELTA COUNTY REFERENCE TAG, UNLESS OTHERWISE NOTED.

Signed by M. P. Davis Date 12/28/98  
Surveyor's Michigan License No. 16926