

FEB 02 1999

SECTION

LAND CORNER RECORDATION CERTIFICATE  
Filing Requirement of Act 74, Mich. P.A. 1970

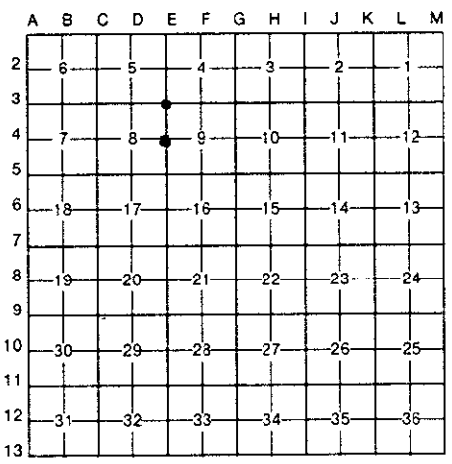
Approved By Delta County  
Land Survey Remonumentation  
Peer Group Under Act 345 Of  
P.A. Of 1990 On December 30, 1998  
*Robert Schmalzing*  
Acting Chairman

For corners in DELTA (County)

	Located In:	Corner Code #
1. Public Land Survey	T 40 N R 19 W	E - 3
	T 40 N R 19 W	E - 4 ✓
	T _____ R _____	_____
	T _____ R _____	_____
2. Property Controlling in Section	S _____ T _____ R _____	_____
	S _____ T _____ R _____	_____
3. Miscellaneous Property in Sec.	S _____ T _____ R _____	_____
	S _____ T _____ R _____	_____
4. Lot No. _____, Recorded Plat _____		
5. Private Claims	E-3 [NW COR SEC 9] E-4 [W1/4 COR SEC 9]	

Recorded: Jan 4 1999  
3:40 PM  
Page 9 of 115  
*William C. Thomas*  
Delta County, MI Reg. of Deeds

Register of Deeds Stamp & File Number



I, M.P. DAVIS, in a field survey on DECEMBER, 19 98, do hereby certify that under requirements of P.A. 74, Michigan P.A. of 1970, the corner points mentioned in lines 1 and 2 above were in conformance with regulations and rules therefore as required in the current manual of survey instructions of the United States Department of the Interior, Bureau of Land Management or by a decree of a Court of Law and/or that the corner points mentioned in lines 3, 4 and 5 above were in conformance with the rules of the Michigan Board of Land Surveyors or by a Decree of a Court of Law; established, re-established, monumented, re-monumented, recovered, found as expressed below:

NOTE: Not more than 4 corners, all in the same town and range, may be recorded on this certificate.

- A. Description of original monument and accessories and/or subsequent restoration:
- E-3 [NW COR SEC. 9] A.MERRYWEATHER, D.S. - 1848 - WOOD POST (SPRUCE 06"-S20°E-18 LINKS) (TAMARACK 10"-N30°W-18 LINKS) NO RECORD EVIDENCE OF SUBSEQUENT CORNER RECOVERY AND/OR MONUMENTATION.
  - E-4 [W1/4 COR SEC. 9] A.MERRYWEATHER, D.S. - 1848 - WOOD POST (TAMARACK 06"-S50°E-09 LINKS) (SPRUCE 08"-N50°W-05 LINKS) NO RECORD EVIDENCE OF SUBSEQUENT CORNER RECOVERY AND/OR MONUMENTATION.

- B. Description of corner evidence found and/or method applied in restoring or reestablishing corner:
- E-3 [NW COR SEC. 9] NO CORNER EVIDENCE FOUND. RESTORED CORNER POSITION BY DOUBLE PROPORTIONATE DISTANCE BETWEEN THE SECTION CORNER 2 MILES SOUTH & THE M.C. AT MOSS LAKE TO THE NORTH AND SECTION CORNERS 1 MILE EAST & 2 MILES WEST.
  - E-4 [W1/4 COR SEC. 9] NO CORNER EVIDENCE FOUND. RESTORED CORNER POSITION AT MIDPOINT BETWEEN AND ON LINE WITH THE SECTION CORNERS 1/2 MILE NORTH & SOUTH.



- C. Description of monument for corner and accessories established to perpetuate locating the position of the corner:
- E-3 SET BERNTSEN ALNB30 ALUMN MON. W/A 3 1/4" CAP STAMPED TO ID THE CORNER POSITION.  

SPRUCE 04"	SPRUCE 04"	SPRUCE 06"	SURVEY MONUMENT SIGN POST
S65°E	S01°W	N54°W	NORTH
12.43	14.17'	17.76'	0.87' (TO FACE)
  - E-4 SET BERNTSEN ALNB30 ALUMN MON. W/A 3 1/4" CAP STAMPED TO ID THE CORNER POSITION.  

CEDAR 10"	CEDAR 05"	CEDAR 05"	CEDAR 05"	SURVEY MONUMENT SIGN POST
N40°E	S49°E	S71°W	N35°W	NORTH
21.22'	20.96'	17.43'	26.16'	1.36' (TO FACE)

NOTE: BEARINGS TO REFERENCE OBJECTS ARE MAGNETIC-DISTANCES ARE TO NAIL W/A DELTA COUNTY REFERENCE TAG, UNLESS OTHERWISE NOTED.

Signed by M.P. Davis Date 12/28/98

Surveyor's Michigan License No. 16926