

EXHIBIT

65-57

OCT 26 1995
COMMISSION

Approved by Delta County
Land Survey Remonumentation
Peer Group Under Act 345 Of
P.A. Of 1990 On June 6, 1995
Walter C. Thomas
Acting Chairman

LAND CORNER RECORDATION CERTIFICATE
Filing Requirement of Act 74, Mich. P.A. 1970

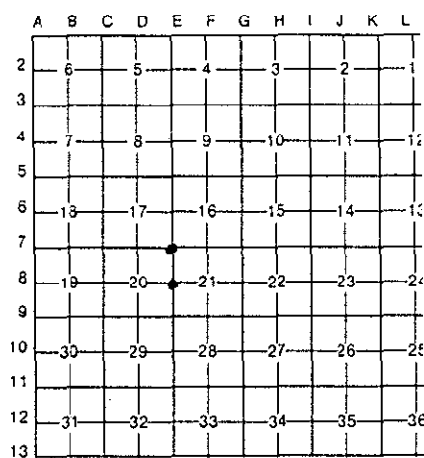
For corners in
DELTA
County)

Located In:	Corner Code ##
1. Public Land Survey T 40 N R 19 W	E-7 1-3-8
T _____ R _____	_____
T _____ R _____	_____
T _____ R _____	_____
2. Property Controlling S _____ T _____ R _____	_____
in Section S _____ T _____ R _____	_____
3. Miscellaneous S _____ T _____ R _____	_____
Property in Sec. S _____ T _____ R _____	_____
4. Lot No. _____, Recorded Plat _____	_____
5. Private Claims _____	_____

Recorded JUN 13 1995
9:00 o'clock A.M. in Liber 8 Page 66-67
Walter C. Thomas
Reg. of Deeds.
Delta County, Michigan
Register of Deeds Stamp & File Number

E-7 [NW COR SEC 21] E-8 [W1/4 COR SEC 21]

I. M.P. DAVIS in a field survey on DECEMBER 19 31 do hereby certify that under requirements of P.A. 74, Michigan P.A. of 1970, the corner points mentioned in lines 1 and 2 above were in conformance with regulations and rules therefore as required in the current manual of survey instructions of the United States Department of the Interior, Bureau of Land Management or by a decree of a Court of Law and/or that the corner points mentioned in lines 3, 4 and 5 above were in conformance with the rules of the Michigan Board of Land Surveyors or by a Decree of a Court of Law; established, re-established, monumented, re-monumented, recovered, found as expressed below:



NOTE: Not more than 4 corners, all in the same town and range, may be recorded on this certificate.

A. Description of original monument and accessories and/or subsequent restoration:

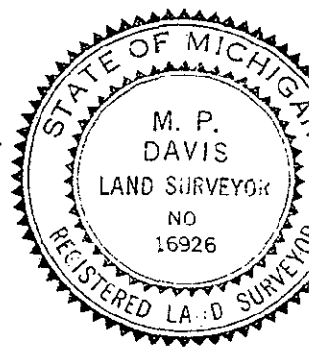
E-7 [NW COR SEC. 21] A.MERRYWEATHER, D.S. - 1848 - WOOD POST (SOFT MAPLE 8"-N33°W-10 LINKS) (HEMLOCK 8"-S75°E-41 LINKS)
M.S.McNABB - 1930 - CORNER IN PLACE - ROAD ALIGNMENT SURVEY FOR COUNTY ROAD 497, NO WIT'S NOTED OR DESCRIPTION OF MONUMENT GIVE

E-8 [W1/4 COR SEC. 21] A.MERRYWEATHER, D.S. - 1848 - WOOD POST (NORWAY PINE 12"-NORTE-16 LINKS) (NORWAY PINE 12"-N30°W-07 LINKS)
NO RECORD EVIDENCE OF SUBSEQUENT CORNER RECOVERY OR MONUMENTATION FOUND

B. Description of corner evidence found and/or method applied in restoring or reestablishing corner:

E-7 [NW COR SEC. 21] RESTORED CORNER POSITION BY RETRACEMENT OF M.S.McNABB'S 1930 ROAD ALIGNMENT SURVEY & TIES TO THE CORNER SHOWN THERE ON. ACCEPTED THIS POSITION AS THE BEST AVAILABLE EVIDENCE AS TO THE LOCATION OF THE POSITION OF THE ORIGINAL CORNER. SEE BACK OF CERTIFICATE FOR DIAGRAM.

E-8 [W1/4 COR SEC. 21] ESTABLISHED CORNER POSITION ON THE N-S SECTION LINE AS ESTABLISHED IN McNABB'S ROAD ALIGNMENT SURVEYS OF COUNTY ROADS 497 & 499 AND AT GLO DISTANCE SOUTH OF THE NW COR OF SEC 21. THE CORNER POSITION FALLS ON THE EAST SLOPE OF THE OLD NAHMA RAILROAD GRADE, NO EVIDENCE OF THE ORIGINALS OR SUBSEQUENT MONUMENTATION FOUND. SEE BACK OF CERTIFICATE FOR DIAGRAM.



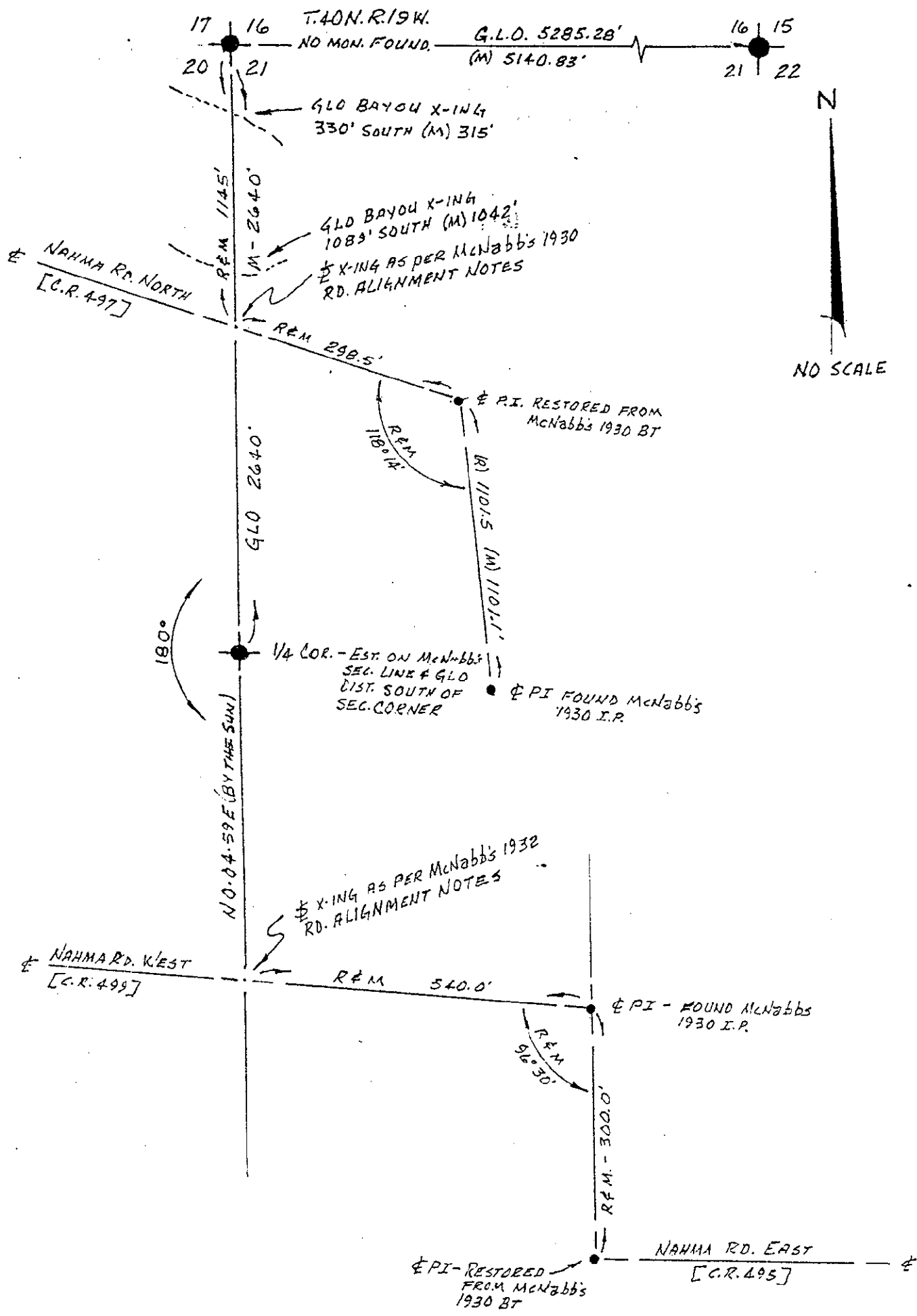
C. Description of monument for corner and accessories established to perpetuate locating the position of the corner:

E-7 SET BERNTSEN AINB30 ALUMN MON. W/A 3-1/4" CAP STAMPED TO ID THE CORNER POSITION.
MAPLE 5" OAK 9" OAK 12" W. PINE 18" SURVEY MONUMENT SIGN POST
N25°W N68°E S15°E S54°W WEST
29.33' 36.38' 10.08' 32.89' 2.11' (TO FACE)

E-8 SET BERNTSEN AINB30 ALUMN MON. W/A 3-1/4" CAP STAMPED TO ID THE CORNER POSITION.
W. PINE 9" W. PINE 12" W. PINE 24" OAK 7" SURVEY MONUMENT SIGN POST
N52°W N29°E S87°E S34°W SOUTH
48.25' 38.20' 33.56' 34.23' 2.54' (TO FACE)

NOTE: BEARINGS TO REFERENCE OBJECTS ARE MAGNETIC-DISTANCES ARE TO NAIL W/A DELTA COUNTY REFERENCE TAG, UNLESS OTHERWISE NOTED.

Signed by M.P. Davis Date 4/13/95
Surveyor's Michigan License No. 16926



NO SCALE