

OCT 26 1995

COMMISSION

Approved by Delta County Land Survey Remonumentation Peer Group Under Act 345 Of P.A. Of 1990 On June 6, 1995

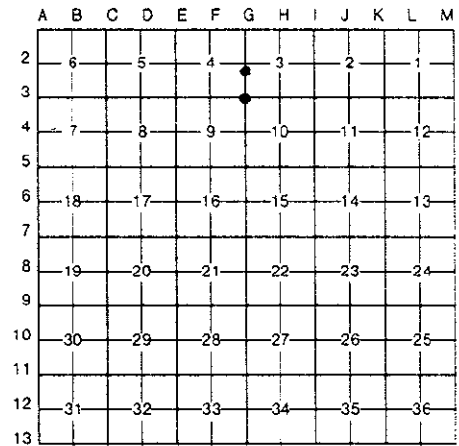
LAND CORNER RECORDATION CERTIFICATE Filing Requirement of Act 74, Mich. P.A. 1970

For corners in

Table with columns: DELTA (County), Located In:, Corner Code ##. Rows include Public Land Survey, Property Controlling in Section, and Miscellaneous Property in Sec.

Recorded JUN 13 1995 at 9:00 o'clock A.M. in Liber 8 Page 59. Registrar: Wallace C. Thuman, Delta County, Michigan. Register of Deeds Stamp & File Number

4. Lot No. , Recorded Plat
5. Private Claims G-3 [NW COR SEC 10] G-2/3 [M.C. SEC'S 4/3]



I, M.P. DAVIS, in a field survey on DECEMBER, 19 94, do hereby certify that under requirements of P.A. 74, Michigan P.A. of 1970, the corner points mentioned in lines 1 and 2 above were in conformance with regulations and rules therefore as required in the current manual of survey instructions of the United States Department of the Interior, Bureau of Land Management or by a decree of a Court of Law and/or that the corner points mentioned in lines 3, 4 and 5 above were in conformance with the rules of the Michigan Board of Land Surveyors or by a Decree of a Court of Law; established, re-established, monumented, re-monumented, recovered, found as expressed below:

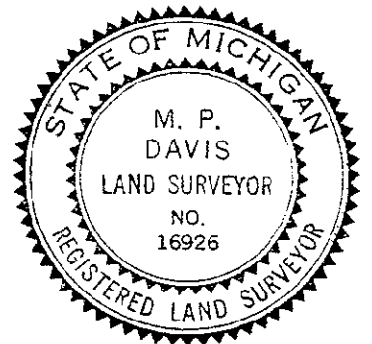
NOTE: Not more than 4 corners, all in the same town and range, may be recorded on this certificate.

A. Description of original monument and accessories and/or subsequent restoration:

- G-3 [NW COR SEC. 10] A.MERRYWEATHER, D.S. - 1848 - WOOD POST (BIRCH 09"-S50°W-20 LINKS) (CEDAR 12"-N30°E-17 LINKS)
M.S.McNABB-1919-"FROM ORIGINALS" - SET STAKE & BT STAKES N45°W-16.3' & S45°E-15.6'
M.DAVIS - 1971 - FOUND IN PLACE SCRIBED CEDAR POST, NO EVIDENCE OF McNABB'S BT STAKES. SET 1" I.P. & NOTED NEW BT'S AND RECORDED SAME IN LIBER 1 OF LCR'S ON PAGE 138 (CEDAR 16"-N64°W-42.0')(CEDAR 6"-S45°E-15.6')(W.BIRCH 8"-N32°W-20.4')(BALSAM-6"-S36°W-14.8')
G-2/3 [M.C. SEC'S 4/3] A.MERRYWEATHER, D.S. - 1848 - SPRUCE 06" CORNER TREE (WHITE PINE 30"-S30°W-15 LINKS)
M.S.McNABB - 1919 - *ID FROM STUMP OF ORIGINAL W.PINE BT* SET STAKE - W.BIRCH 10"-S35°E-57.2' & TAMARACK 5"-S11°E-72.5'
M.DAVIS - 1971 - FOUND IN PLACE A WOOD POST SCRIBED "MC" - NO EVIDENCE OF PREVIOUSLY ESTABLISHED BT'S-SET 1" I.P. NO WIC'S NOTED

B. Description of corner evidence found and/or method applied in restoring or reestablishing corner:

- G-3 [NW COR SEC. 10] FOUND IN PLACE I.P. & CEDAR POST AS NOTED BY MYSELF IN LIBER 1 OF LCR'S ON PAGE 138 BOTH CEDAR BT'S NOTED PREVIOUSLY ARE STILL GREEN. ACCEPTED EXISTING MONUMENT AS A CAREFUL & FAITHFUL PERPETUATION OF THE POSITION OF THE ORIGINAL CORNER.
G-2/3 [M.C. SEC'S. 4/3] FOUND IN PLACE A I.P. & REMAINS OF WOOD POST. IDENTIFIED EXISTING MONUMENT AS BEING THE SAME AS THAT FOUND AND MONUMENTED BY MYSELF IN 1971. ACCEPTED EXISTING MONUMENT AS BEING A CAREFUL & FAITHFUL PERPETUATION OF THE POSITION OF THE ORIGINAL CORNER.



C. Description of monument for corner and accessories established to perpetuate locating the position of the corner:

- G-3 REPLACED EXISTING I.P. W/A 4" X 4" X 36" CONC.MONUMENT, W/A 3 1/4" BRASS CAP STAMPED TO ID THE CORNER POSITION.
CEDAR 18" W. BIRCH 10" CEDAR 08" BALSAM 09" SURVEY MONUMENT SIGN POST
N64°W N32°E S45°E S36°W WEST
42.20' 20.46' 15.78' 14.53' 2.91' (TO FACE)
G-2/3 SET, OVER EXISTING MONUMENT, A BERNTSEN AINE30 ALUMN MON. W/A 3 1/4" CAP STAMPED TO ID THE CORNER POSITION.
MAPLE 12" MAPLE 14" MAPLE 10" SURVEY MONUMENT SIGN POST
N17°E S89°E N51°W S45°W
12.27' 15.19' 14.78' 2.96' (TO FACE)

NOTE: BEARINGS TO REFERENCE OBJECTS ARE MAGNETIC-DISTANCES ARE TO NAIL W/A DELTA COUNTY REFERENCE TAG, UNLESS OTHERWISE NOTED.

Signed by M.P. Davis Date 4/13/95
Surveyor's Michigan License No. 16926