

SURVEY & REMONUMENTATION

FEB 02 1999

SECTION

LAND CORNER RECORDATION CERTIFICATE
Filing Requirement of Act 74, Mich. P.A. 1970

Approved By Delta County
Land Survey Remonumentation
Peer Group Under Act 345 Of
P.A. Of 1990 On December 30, 1998
Robert Helmering
Acting Chairman

For corners in

DELTA

(County)

Located In:

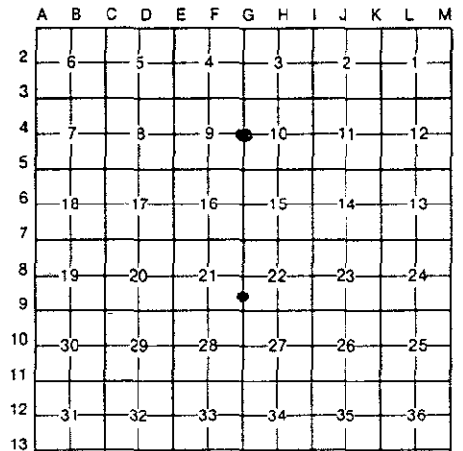
Corner Code #

1. Public Land Survey	T	40 N	R	19 W	✓ G - 4
	T	40 N	R	19 W	MC - G-8/9 (16)
	T		R		
	T		R		
2. Property Controlling in Section	S		T	R	
	S		T	R	
3. Miscellaneous Property in Sec.	S		T	R	
	S		T	R	

Recorded Jan 4 1999
at 3:40 PM
Liber 9 Page 108
William C. Thorne
Delta County Reg. of Deeds

Register of Deeds Stamp & File Number

4. Lot No. _____, Recorded Plat _____
5. Private Claims _____
G-4 [W1/4 COR SEC 10] G-8/9 [M.C. SEC 9/10]



I, M.P. DAVIS, in a field survey on DECEMBER, 19 98, do hereby certify that under requirements of P.A. 74, Michigan P.A. of 1970, the corner points mentioned in lines 1 and 2 above were in conformance with regulations and rules therefore as required in the current manual of survey instructions of the United States Department of the Interior, Bureau of Land Management or by a decree of a Court of Law and/or that the corner points mentioned in lines 3, 4 and 5 above were in conformance with the rules of the Michigan Board of Land Surveyors or by a Decree of a Court of Law; established, re-established, monumented, re-monumented, recovered, found as expressed below:

NOTE: Not more than 4 corners, all in the same town and range, may be recorded on this certificate.

A. Description of original monument and accessories and/or subsequent restoration:

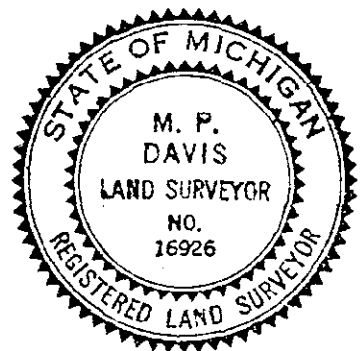
G-4 [W1/4 COR SEC. 10] A.MERRYWEATHER, D.S. - 1848 - WOOD POST (TAMARACK 12"-CORNER TREE)
M.S. McNABB - 1919 - NO CORNER TO BE FOUND - RESTORED FROM 'GLO' DISTANCE SOUTH TO SWAMP EDGE & SPRUCE SIGHT TREE, (CEDAR 08° N05°E 13.2')(BIRCH 10° S65°E 20.7')

G-8/9 [M.C. SEC 9/10] A.MERRYWEATHER, D.S. - 1848 - WOOD POST (CEDAR 10° S40°W 57 LINKS)
M.S. McNABB - 1925 - LARGE CEDAR STAKE IN PLACE, SET I.P. (CEDAR 06° N75°E 9.5') "THIS CORNER FOUND AT GOV. DISTANCE SOUTH OF 1/4 CORNER AND 285' NORTH OF PRESENT SHORE.

B. Description of corner evidence found and/or method applied in restoring or reestablishing corner:

G-4 [W1/4 COR SEC. 10] FOUND IN PLACE REMAINS OF POST POINT BURIED 6" BELOW GRADE. ID MONUMENT AS THAT SET BY M.S. McNABB IN 1925 FROM HIS CEDAR BT NE STILL GREEN AND W. BIRCH BT SE WHICH IS NOW A WELL DETERIORATED STUMP. ACCEPTED EXISTING MONUMENT AS BEING THE BEST AVAILABLE EVIDENCE AS TO THE LOCATION OF THE POSITION OF THE ORIGINAL CORNER.

G-8/9 [M.C. SEC. 9/10] FOUND IN PLACE McNABB'S 1925 IRON PIPE 285' M/L NORTH OF PRESENT SHORE AND AT APPROXIMATE 'GLO' DISTANCE SOUTH OF THE 1/4 CORNER TO THE NORTH. McNABB'S CEDAR BT NOW ONLY A STUMP IN THE ADVANCE STAGES OF DECAY, IDENTIFIABLE ONLY BY ITS' RELATION TO THE EXISTING MONUMENT. ACCEPTED EXISTING MONUMENT AS BEING THE BEST AVAILABLE EVIDENCE AS TO THE LOCATION OF THE POSITION OF THE ORIGINAL CORNER.



C. Description of monument for corner and accessories established to perpetuate locating the position of the corner:

G-4 REPLACED POST POINT W/A BERNTSEN A1NB30 ALUMN MON. W/A 3 1/4" CAP STAMPED TO ID THE CORNER POSITION.
CEDAR 16" (OLD BT) CEDAR 09" CEDAR 08" CEDAR 08" SURVEY MONUMENT SIGN POST
N05°E S68°E S12°W N69°W NORTH
13.60' 33.31' 21.24' 18.43' 1.37' (TO FACE)

G-8/9 SET, OVER EXISTING MONUMENT, A BERNTSEN A1NB30 ALUMN MON. W/A 3 1/4" CAP STAMPED TO ID THE CORNER POSITION.
CEDAR 06" CEDAR 10" CEDAR 06" SURVEY MONUMENT SIGN POST
S53°E S10°W N24°W NORTH
15.02 60.44 31.35 1.37' (TO FACE)

NOTE: BEARINGS TO REFERENCE OBJECTS ARE MAGNETIC-DISTANCES ARE TO NAIL W/A DELTA COUNTY REFERENCE TAG, UNLESS OTHERWISE NOTED.

Signed by M.P. Davis Date 12/25/98

Surveyor's Michigan License No. 16926