

OCT 26 1995 COMMISSION

64

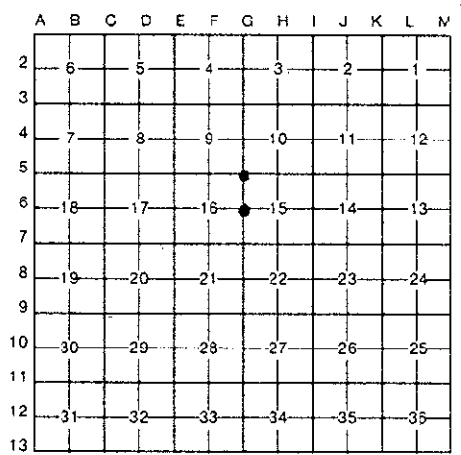
Approved by Delta County Land Survey Remonumentation Peer Group Under Act 345 Of P.A. Of 1990 On June 6, 1995. *Shelley Schuchling* Acting Chairman

LAND CORNER RECORDATION CERTIFICATE Filing Requirement of Act 74, Mich. P.A. 1970

Table with columns: For corners in DELTA (County), Located In: (Town, Range, Section), Corner Code #. Includes entries for Public Land Survey, Property Controlling in Section, and Miscellaneous Property in Sec.

Recorded JUN 13 1995 at 9:00 o'clock A.M. in Liber 8 Page 64. *William C. Thomas* Reg. of Deeds. Delta County, Michigan. Register of Deeds Stamp & File Number

4. Lot No. \_\_\_\_\_, Recorded Plat \_\_\_\_\_  
5. Private Claims \_\_\_\_\_ G-5 [NW COR SEC 15] G-6 [W1/4 COR SEC 15]



I, M.P. DAVIS, in a field survey on DECEMBER, 19 94, do hereby certify that under requirements of P.A. 74, Michigan P.A. of 1970, the corner points mentioned in lines 1 and 2 above were in conformance with regulations and rules therefore as required in the current manual of survey instructions of the United States Department of the Interior, Bureau of Land Management or by a decree of a Court of Law and/or that the corner points mentioned in lines 3, 4 and 5 above were in conformance with the rules of the Michigan Board of Land Surveyors or by a Decree of a Court of Law; established, re-established, monumented, re-monumented, recovered, found as expressed below:

NOTE: Not more than 4 corners, all in the same town and range, may be recorded on this certificate.

A. Description of original monument and accessories and/or subsequent restoration:  
G-5 [NW COR SEC. 15] A.MERRYWEATHER, D.S. - 1848 - WOOD POST (SPRUCE 10"-N15°W-12 LINKS) (BALSAM 08"-S54°E-24 LINKS) D.A.BROTHERTON-1909-IDENTIFIED FROM BURNT STUMPS 'CLAIMED BY SETTLERS TO BE ORIGINALS'-SET STAKE AND NEW BT'S (N.PINE 10"-N70°E-27' (DEAD TANARACK 9"-WEST-23.4')  
G-6 [W1/4 COR SEC. 15] A.MERRYWEATHER, D.S. - 1848 - WOOD POST - (POPLAR 09"-N60°E-16 LINKS) (POPLAR 06"-S30°W-10 LINKS) D.A.BROTHERTON-1909-NO EVIDENCE OF ORIGINALS, ESTABLISHED "1/2 DISTANCE BETWEEN CORNERS", SET WOOD STAKE & BT STAKE N70°W-12' M.S.McNABB-1925-FOUND IN PLACE A SCRIBED WOOD POST & BT STAKE N70°E-12' NOTED NEW BT'S (SPRUCE 7"-S35°W-28')(CEDAR 9"-S65°E-26.6' T.O'BRIEN-2/12/79-FOUND I.P. & POST-NOTED NEW BT'S & RECORDED IN LIBER 2 OF LCR'S ON PAGE 253

B. Description of corner evidence found and/or method applied in restoring or reestablishing corner:  
G-5 [NW COR SEC. 15] NO EVIDENCE OF BROTHERTON'S MONUMENT OR BT'S FOUND. RESET CORNER BY EXTENDING LINE NORTH FROM SW COR OF SEC 15 THRU THE W1/4 COR OF SEC 15 & ESTABLISHING THE NW COR OF SEC 15 ON THIS LINE & AT A DISTANCE NORTH OF THE 1/4 CORNER THAT IS EQUAL TO THE DISTANCE FROM THE 1/4 COR TO THE SW COR. ACCEPTED THIS POSITION AS A CAREFUL & FAITHFUL PERPETUATION OF THE POSITION OF THE ORIGINAL CORNER.  
G-6 [W1/4 COR SEC. 15] NO MONUMENT FOUND - ID CORNER POSITION FROM BOTH OF McNABB'S 1925 BT'S, NOW STUMPS, IRON MARKS ARE PLAIN. THIS POSITION IS IN CONFLICT WITH & FOUND TO BE APPROX. 7' SOUTH & 85' EAST OF THE CORNER RECORDED PREVIOUSLY BY T. O'BRIEN IN LIBER 2 OF LCR'S ON PAGE 253. ACCEPTED THIS LOCATION AS BEING THAT ESTABLISHED BY BROTHERTON IN 1909 & AS BEING A CAREFUL & FAITHFUL REESTABLISHMENT OF THE POSITION OF THE ORIGINAL CORNER.



C. Description of monument for corner and accessories established to perpetuate locating the position of the corner:  
G-5 SET A BERNTSEN ALNB30 ALUMN MON. W/A 3 1/4" CAP STAMPED TO ID THE CORNER POSITION.  
RED PINE 23" SPRUCE 07" SPRUCE 07" SPRUCE 09" SURVEY MONUMENT SIGN POST  
S20°E S29°W N86°W N38°E WEST  
37.53' 24.30' 27.47' 13.17' 2.60' (TO FACE)  
G-5 SET A BERNTSEN ALNB30 ALUMN MON. W/A 3 1/4" CAP STAMPED TO ID THE CORNER POSITION.  
CEDAR 09" CEDAR 05" CEDAR 06" McNABB'S CEDAR STUMP 09" SURVEY MONUMENT SIGN POST  
S30°W N30°W N24°E S65°E WEST  
20.50' 28.97' 22.22' 26.6' (TO FACE) 2.38' (TO FACE)

NOTE: BEARINGS TO REFERENCE OBJECTS ARE MAGNETIC-DISTANCES ARE TO NAIL W/A DELTA COUNTY REFERENCE TAG, UNLESS OTHERWISE NOTED.

Signed by M.P. Davis Date 4/13/95

Surveyor's Michigan License No. 16926