

OCT 26 1995

COMMISSION

Approved by Delta County Land Survey Remonumentation Peer Group Under Act 345 Of P.A. Of 1990 On June 6, 1995

LAND CORNER RECORDATION CERTIFICATE Filing Requirement of Act 74, Mich. P.A. 1970

Signature of Delta County Chairman

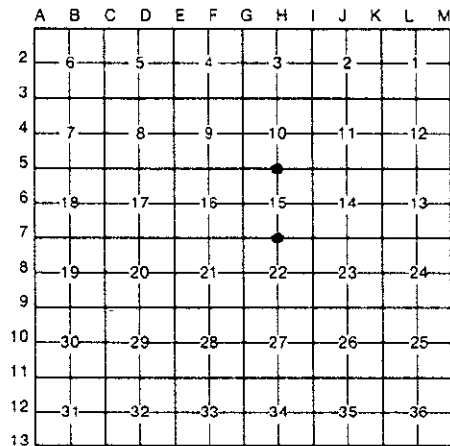
For corners in DELTA (County)

Located In: Corner Code ##

Table with 3 columns: Survey Type, Located In, Corner Code. Includes Public Land Survey, Property Controlling in Section, and Miscellaneous Property in Sec.

Recorded JUN 13 1995 at 9:00 o'clock A.M. in Liber 8 Page 61. Register of Deeds Stamp & File Number

4. Lot No. , Recorded Plat
5. Private Claims H-5 [N1/4 COR SEC 15] H-7 [N1/4 COR SEC 22]



I, M.P. DAVIS, in a field survey on JANUARY, 19 95, do hereby certify that under requirements of P.A. 74, Michigan P.A. of 1970, the corner points mentioned in lines 1 and 2 above were in conformance with regulations and rules therefore as required in the current manual of survey instructions of the United States Department of the Interior, Bureau of Land Management or by a decree of a Court of Law and/or that the corner points mentioned in lines 3, 4 and 5 above were in conformance with the rules of the Michigan Board of Land Surveyors or by a Decree of a Court of Law; established, re-established, monumented, re-monumented, recovered, found as expressed below:

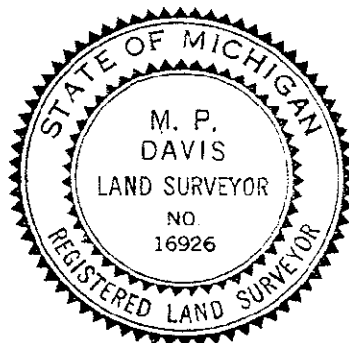
NOTE: Not more than 4 corners, all in the same town and range, may be recorded on this certificate.

A. Description of original monument and accessories and/or subsequent restoration:

- H-5 [N1/4 COR SEC. 15] WOOD POST - A. MERRYWEATHER, D.S. - 1848 (TAMARACK 14"-N50°W-14 LINKS) (CEDAR 11'-S46°E-10 LINKS)
D.A. BROTHERTON -1909-NO ORIGINAL EVIDENCE FOUND-SET 4" CEDAR STAKE FROM GLO SIGHT TREE (CEDAR 10" S23°E-3.5') (SQ'D. CEDAR S27°W 9.6')
M.S. McNABB-1921-ID CORNER POSITION BY STAKE & BT'S IN PLACE.
T. O'BRIEN, RLS - FOUND SCRIBED POST IN PLACE & SET 1/2" IRON PIN W/A SURVEY CAP-REC'D 2/12/79 IN L.2 OF LCR'S PAGE 253
H-7 [N1/4 COR SEC. 22] A.MERRYWEATHER, D.S. - 1848 - N.PINE 12" CORNER TREE (MAPLE 03'-N65°E-12 LINKS)
D.A. BROTHERTON - 1909 - NO CORNER FOUND. "ESTABLISHED ON OLD E-W LINE" 40 CHAINS EAST OF SECTION CORNER. (CROSS ON FLAT STONE N86°W-234.2')
M.S. McNABB-1925-ID CORNER POSITION BY IRON STAKE IN FIELD & STONE BT. (W. BIRCH-WEST-239.2')

B. Description of corner evidence found and/or method applied in restoring or reestablishing corner:

- H-5 [N1/4 COR SEC. 15] FOUND IN PLACE REMAINS OF SCRIBED CEDAR POST & T. O'BRIENS IRON PIN & CAP. ID SAME FROM BROTHERTON'S SE CEDAR BT (NOW A STUMP) & O'BRIENS NW CEDAR BT, STILL GREEN. ACCEPTED EXISTING MONUMENT AS A CAREFUL & FAITHFUL REESTABLISHED OF THE POSITION OF THE ORIGINAL CORNER.
H-7 [N1/4 COR SEC. 22] NO CORNER EVIDENCE FOUND, CORNER POSITION FALLS IN "NAHMA GOLF COURSE". D.A. BROTHERTON'S STONE BT HAS BEEN DISTURBED IN GOLF COURSE CONSTRUCTION. FOUND McNABB'S 1925 C1/4 & C1/16 COR'S IN SEC. 22 & EXTENDED LINE N. FROM C1/4 THRU THE C1/16 & ESTABLISHED THE N1/4 COR. ON THIS LINE & PROPORTIONATE DISTANCE N. OF THE C1/16. ACCEPTED THIS LOCATION AS BEING THE BEST AVAILABLE EVIDENCE AS TO THE POSITION OF THE ORIGINAL CORNER.



C. Description of monument for corner and accessories established to perpetuate locating the position of the corner:

- H-5 PLACED OVER EXISTING MONUMENT A BERNTSEN A1NB30 ALUMN MON W/A 3 1/4" ALUMN CAP STAMPED TO ID THE CORNER POSITION.
CEDAR 12" N62°W 31.83'
CEDAR 07" S50°E 24.95'
ASH 06" N74°E 11.74'
CEDAR 05' S28°W 17.00'
SURVEY MONUMENT SIGN POST NORTH 2.17' (TO FACE)
H-7 SET A 5/8" X 18" REBAR W/A 3 1/4" ALUMN CAP STAMPED TO ID THE CORNER POSITION.
CEDAR 12" N55°W 99.42'
CEDAR 16" N84°W 72.97'
C/L COUNTY ROAD 495 WEST 276.57'
NOTE: NO OTHER WIT'S AVAILABLE. SIGN POST NOT SET AS BED ROCK IS AT OR NEAR SURFACE

NOTE: BEARINGS TO REFERENCE OBJECTS ARE MAGNETIC-DISTANCES ARE TO A NAIL W/A DELTA COUNTY REFERENCE TAG, UNLESS OTHERWISE NOTED.

Signed by M.P. Davis Date 4/13/95

Surveyor's Michigan License No. 16926