

SURVEY & REMONUMENTATION

FEB 02 1999

Approved By Delta County
Land Survey Remonumentation
Peer Group Under Act 345 Of
P.A. Of 1990 On December 30, 1998
Walter C. Thomas
Chairman

LAND CORNER RECORDATION CERTIFICATE
Filing Requirement of Act 74, Mich. P.A. 1970

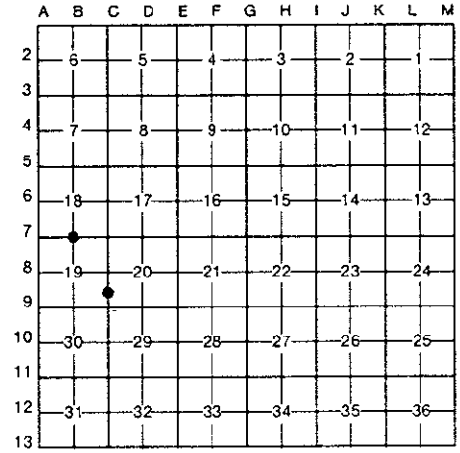
For corners in **SECTION**
DELTA
(County)

	Located In:	Corner Code #
1. Public Land Survey	T _____ R _____ T 40 N R 19 W T 40 N R 19 W	B - 7 MC C-8/9 (12) ✓
2. Property Controlling in Section	S _____ T _____ R _____ S _____ T _____ R _____	
3. Miscellaneous Property in Sec.	S _____ T _____ R _____ S _____ T _____ R _____	

Recorded Jan 4 1999
3:40 PM
Book 9 Page 114
Walter C. Thomas
Delta County, MI Reg. of Deeds

Register of Deeds Stamp & File Number

4. Lot No. _____, Recorded Plat _____
5. Private Claims B-7 [N1/4 COR SEC 19] C-8/9 [MC SEC 19/20]



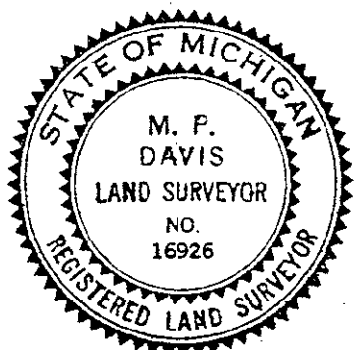
I, M.P. DAVIS, in a field survey on DECEMBER, 1998, do hereby certify that under requirements of P.A. 74, Michigan P.A. of 1970, the corner points mentioned in lines 1 and 2 above were in conformance with regulations and rules therefore as required in the current manual of survey instructions of the United States Department of the Interior, Bureau of Land Management or by a decree of a Court of Law and/or that the corner points mentioned in lines 3, 4 and 5 above were in conformance with the rules of the Michigan Board of Land Surveyors or by a Decree of a Court of Law; established, re-established, monumented, re-monumented, recovered, found as expressed below:

NOTE: Not more than 4 corners, all in the same town and range, may be recorded on this certificate.

A. Description of original monument and accessories and/or subsequent restoration:
B-7 [N1/4 COR SEC. 19] A.MERRYWEATHER, DS - 1848 - WOOD POST - (CEDAR 08° N30°W 09 LINKS)(TAMARACK 10° S20°E 21 LINKS)
NO RECORD OF SUBSEQUENT CORNER RECOVERY AND/OR MONUMENTATION.
C-8/9 [MC SEC. 19/20] A.MERRYWEATHER, D.S. - 1848 - (W.ASH 06° N60°E 43 LINKS) (SOFT MAPLE 14°-N10°W-63 LINKS)
NO RECORD EVIDENCE OF SUBSEQUENT CORNER RECOVERY AND/OR RESTORATION

B. Description of corner evidence found and/or method applied in restoring or reestablishing corner:
B-7 [N1/4 COR SEC. 19] NO CORNER EVIDENCE FOUND. REESTABLISHED CORNER POSITION AT MIDPOINT BETWEEN AND ON LINE WITH SECTION CORNERS 1/2 MILE EAST & WEST.

C-8/9 [MC SEC 19/20] NO CORNER EVIDENCE FOUND. IN THAT T40N R19W IS A FRACTIONAL TOWNSHIP DUE TO LAKE MICHIGAN AND NO FURTHER CONTROL TO THE SOUTH WAS AVAILABLE, A LINE ON A MEAN BEARING OF THE WEST LINE OF SEC 19 AND THE EAST LINE OF SEC 20 WAS RUN SOUTH FROM THE NW CORNER OF SEC 20 AND THE CORNER WAS PLACED ON THIS LINE AT THE "GLO" DISTANCE OF 4422.0' SOUTH OF THE SECTION CORNER.



C. Description of monument for corner and accessories established to perpetuate locating the position of the corner:
B-7 SET BERNTSEN ALNB30 ALUM MONUMENT W/A 3 1/4" CAP STAMPED TO ID THE CORNER POSITION.
TAMARACK 05" W. PINE 24" CEDAR 04" SURVEY MONUMENT SIGN POST
N53°E S15°E N43°W NORTH
24.22' 65.35' 04.85' 1.27' (TO FACE)
C-8/9 SET BERNTSEN ALNB30 ALUMN MON. W/A 3 1/4" CAP STAMPED TO ID THE CORNER POSITION.
CEDAR 07" OAK 06" ASE 05" C/L COUNTY RD 499 SURVEY MONUMENT SIGN POST
N80°E N67°W N15°W NORTH SOUTH
50.25' 23.37' 20.85' 67.00' 1.05' (TO FACE)

NOTE: BEARINGS TO REFERENCE OBJECTS ARE MAGNETIC-DISTANCES ARE TO A NAIL W/A DELTA COUNTY REFERENCE TAG, UNLESS OTHERWISE NOTED.

Signed by M.P. Davis Date 12/28/98
Surveyor's Michigan License No. 16926