

FEB 18 1994

COMMISSIONER

Approved By Delta County Land Survey Remonumentation Peer Group Under Act 345 Of P.A. Of 1990 On Jan 20, 1994

Robert Schumling  
Acting Chairman

LAND CORNER RECORDATION CERTIFICATE  
Filing Requirement of Act 74, Mich. P.A. 1970

For corners in

DELTA  
(County)

Located In:

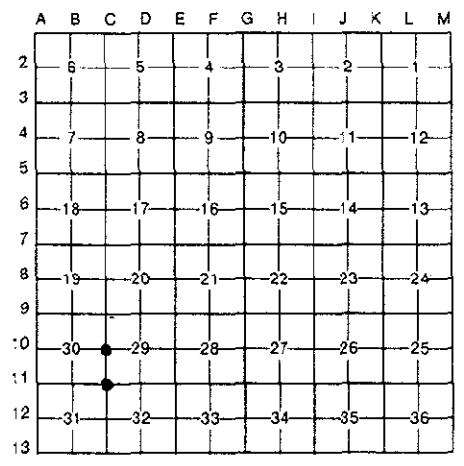
Corner Code ##

1. Public Land Survey	T	40	NR	22	W	C-10 & (C-11)
	T		R			
	T		R			
	T		R			
2. Property Controlling in Section	S		T		R	
	S		T		R	
3. Miscellaneous Property in Sec.	S		T		R	
	S		T		R	

Recorded January 21, 1994  
#9:00 o'clock a.m. in Lib. # 7 Page 353  
William C. Thomas Reg. of Deeds.  
Delta County, Michigan  
Register of Deeds Stamp & File Number

4. Lot No. \_\_\_\_\_, Recorded Plat \_\_\_\_\_  
5. Private Claims  
[C-10] W1/4 COR SEC 29 [C-11] NW COR SEC 32

I, M.P. DAVIS, in a field survey on NOVEMBER, 19 93, do hereby certify that under requirements of P.A. 74, Michigan P.A. of 1970, the corner points mentioned in lines 1 and 2 above were in conformance with regulations and rules therefore as required in the current manual of survey instructions of the United States Department of the Interior, Bureau of Land Management or by a decree of a Court of Law and/or that the corner points mentioned in lines 3, 4 and 5 above were in conformance with the rules of the Michigan Board of Land Surveyors or by a Decree of a Court of Law; established, re-established, monumented, re-monumented, recovered, found as expressed below:



NOTE: Not more than 4 corners, all in the same town and range, may be recorded on this certificate.

A. Description of original monument and accessories and/or subsequent restoration:  
C-10 [W1/4 COR SEC 29] WOOD POST - A. MERRYWEATHER, D.S. - 1846 (SPRUCE PINE 4"-N28°E-10 LINKS) (SPRUCE PINE 4"-S20°W-70 LINKS) M.S. McNABB - 1948 - RESTORED COR POSITION BY RETRACEMENT OF LINE COMMON TO SEC'S 29 & 30 AND RESET CCR AT POSITION INDICATED BY PREVIOUS SURVEY RECORDS - SET IRON BOLT (J.PINE 8"-N50°W-15') (J.PINE 7"-S32°W-8')

C-11 [NW COR SEC 32] WOOD POST - A. MERRYWEATHER, D.S. - 1846 (NORWAY PINE 24"-S39°W-30 LINKS) (SPRUCE PINE 7"-N46°E-13 LINKS) M.S. McNABB - 1948 - ID BY STAKE & BT'S IN PLACE - DROVE IRON BOLT - NO NEW WIT'S NOTED

B. Description of corner evidence found and/or method applied in restoring or reestablishing corner:  
C-10 [W1/4 COR SEC 29] FOUND McNABB'S IRON BOLT & BOTH J. PINE BT'S (NOW BOTH STUMPS) - ACCEPTED EXISTING MON AS BEING A CAREFUL & FAITHFULL REESTABLISHMENT OF THE POSITION OF THE ORIGINAL CORNER

C-11 [NW COR SEC 32] FOUND McNABB'S IRON BOLT & ROTTED REMAINS OF SQ'D WOOD STAKE & THE STUMP OF AN OAK BT - ACCEPTED EXISTING MON AS A CAREFUL & FAITHFULL REESTABLISHMENT OF THE POSITION OF THE ORIGINAL CORNER



C. Description of monument for corner and accessories established to perpetuate locating the position of the corner:

C-10 SET, OVER EXISTING MON, A BERNTSEN AINB30 ALUMN MON W/A 3-1/4" CAP STAMPED TO ID THE CORNER POSITION  
JACK PINE 12" JACK PINE 8" JACK PINE 8" JACK PINE 11" SURVEY MONUMENT SIGN POST  
N2°W N88°E S23°E S48°W N36°W  
15.48' 32.62' 34.14' 21.32' 1.78' (TO FACE)

C-11 SET, OVER EXISTING MON, A BERNTSEN AINB30 ALUMN MON W/A 3-1/4" CAP STAMPED TO ID THE CORNER POSITION  
OAK 18" JACK PINE 9" OAK 14" SURVEY MONUMENT SIGN POST  
N60°W N44°E S39°E S45°W  
74.57' 63.95' 85.34' 1.53' (TO FACE)

NOTE: BEARINGS TO REFERENCE OBJECTS ARE MAGNETIC & DISTANCES ARE TO A NAIL IN THE CENTER OF THE OBJECT UNLESS OTHERWISE NOTED

Signed by M.P. Davis Date 11/15/93  
Surveyor's Michigan License No. 16926