

**SURVEY &
REMONUMENTATION**

FEB 18 1994

COMMISSION

**LAND CORNER RECORDATION CERTIFICATE
Filing Requirement of Act 74, Mich. P.A. 1970**

Approved By Delta County
Land Survey Remonumentation
Peer Group Under Act 345 Of
P.A. Of 1990 On Jan 20, 1994
Walter C. Blum
Acting Chairman

For corners in

DELTA

(County)

Located In:

Corner Code ##

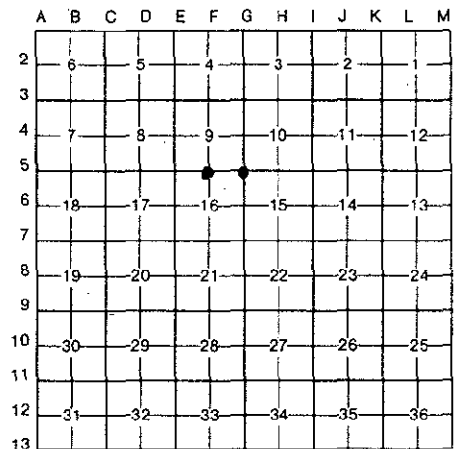
- | | | | | | |
|------------------------------------|---|------|---|------|-------------|
| 1. Public Land Survey | T | 40 N | R | 22 W | (F-5 & G-5) |
| | T | | R | | |
| | T | | R | | |
| | T | | R | | |
| 2. Property Controlling in Section | S | | T | R | |
| | S | | T | R | |
| 3. Miscellaneous Property in Sec. | S | | T | R | |
| | S | | T | R | |

Recorded January 21, 1994
at 9:00 o'clock a.m. in Liber 7 Page 350
Walter C. Blum Reg. of Deeds.
Delta County, Michigan
Register of Deeds Stamp & File Number

4. Lot No. _____, Recorded Plat _____
5. Private Claims _____
[F-5] N1/4 COR SEC 16 [G-5] NW COR OF SEC 15

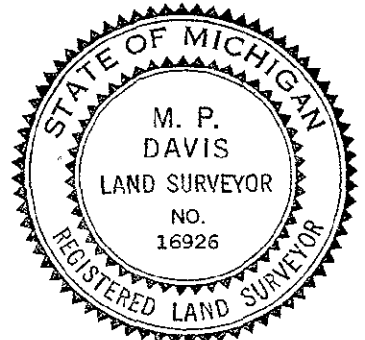
I, M.P. DAVIS, in a field survey on NOVEMBER, 19 93, do hereby certify that under requirements of P.A. 74, Michigan P.A. of 1970, the corner points mentioned in lines 1 and 2 above were in conformance with regulations and rules therefore as required in the current manual of survey instructions of the United States Department of the Interior, Bureau of Land Management or by a decree of a Court of Law and/or that the corner points mentioned in lines 3, 4 and 5 above were in conformance with the rules of the Michigan Board of Land Surveyors or by a Decree of a Court of Law; established, re-established, monumented, re-monumented, recovered, found as expressed below:

NOTE: Not more than 4 corners, all in the same town and range, may be recorded on this certificate.



- A. Description of original monument and accessories and/or subsequent restoration:
F-5 [N1/4 COR SEC 16] WOOD POST - A. MERRYWEATHER, D.S. - 1848 - (SPRUCE 6"-S20°W-4 LINKS) (TAMERAC 12"-N47°E-15 LINKS)
M.S. McNABB - 1944 - FOUND IRON BOLT IN PLACE - NO NEW WIT'S. NOTED
G-5 [NW COR SEC 15] WOOD POST - A. MERRYWEATHER, D.S. - 1846 - (CEDAR 8"-S18°E-7 LINKS) (CEDAR 8"-N15°W-13 LINKS)
F.J. MERRIAM - 1895 - SET LENGTH OF RAIL - PLAT OF FURNACE ADD TO GLADSTONE - REC'D LIBER "B" OF PLATS PAGE 8 - NO WIT'S NOTED
TESTIMONY TO ME, THIS DATE, BY LOCAL PROPERTY OWNER THAT SOMETIME AGO HE REMOVED THE LENGTH OF RAI AS IT HINDERED HIS ENTRANCE INTO HIS GARAGE.

- B. Description of corner evidence found and/or method applied in restoring or reestablishing corner:
F-5 [N1/4 COR SEC 16] FOUND, THIS DATE, THE REMAINS OF A WOOD POST & AN IRON PIN 24" BELOW THE EXISTING ROAD SURFACE - ID COR POSITION BY MEASUREMENTS E & W TO ADJOINING CORNERS ACCEPTED EXISTING MON AS A CAREFUL & FAITHFUL REESTABLISHMENT OF THE POSITION OF THE ORIGINAL CORNER
G-5 [NW COR SEC 15] RESTORED CORNER POSITION FROM LINEAL & ANGULAR MEASUREMENTS FROM THE "SOO LINE" RR R/W AS CONTAINED IN THE PLAT OF SAID FURNACE ADD. ACCEPTED THIS POSITION AS A CAREFUL & FGAITHFUL REESTABLISHMENT OF THE POSITION OF THE ORIGINAL CORNER.



- C. Description of monument for corner and accessories established to perpetuate locating the position of the corner:
F-5 SET, OVER EXISTING MON. & 4" BELOW ROAD SURFACE A 5/8" X 18" REBAR W/A 3-1/4" CAP STAMPED TO ID THE COR POSITION
TAMARACK 13" CEDAR 13" POWER POLE SPRUCE 9" SURVEY MONUMENT SIGN POST
N8°W N35°E S65°E S32°W NORTH
40.88' 41.57' 87.40' 72.35' 17.92' (TO FACE)
G-5 SET, 2" BELOW GROUND SURFACE, A 5/8" X 18" REBAR W/A 3-1/4" ALUMN CAP STAMPED TO ID THE CORNER POSITION
NE COR GARAGE NW COR HOUSE SPRUCE 8" NLY EDGE CONC WLK
N12°W S85°E S8°W S36°W
19.34' 71.33' 75.35' 2.53'

NOTE: BEARINGS TO REFERENCE OBJECTS ARE MAGNETIC & DISTANCES ARE TO A NAIL IN THE CENTER OF THE OBJECT UNLESS OTHERWISE NOTED

Signed by M.P. Davis Date 11/15/93
Surveyor's Michigan License No. 16926