

SURVEY & REMONUMENTATION

OCT 03 2000

SECTION

LAND CORNER RECORDATION CERTIFICATE
 Filing Requirement of Act 74, Mich. P.A. 1970

Approved By Delta County
 Land Survey Remonumentation
 Peer Group Under Act 345 of
 P.A. Of 1990 On July 12, 2000
Robert K. Schmalzer
 Acting Chairman

For corners in

<u>DELTA</u> (County)	Located In:	Corner Code #
1. Public Land Survey	T40 N R 23 W	D-12 ✓
	T40 N R 23 W	H-11
2. Property Controlling in Section	T ___ R ___	___
	T ___ R ___	___
3. Miscellaneous Property in Sec.	S ___ T ___ R ___	___
	S ___ T ___ R ___	___

RECORDED 28 July 2000
 AT 9:00 O'CLOCK a.m.
 LIBER 9 PAGE 219
William C. Thomas
 DELTA COUNTY MI REG. OF DEEDS

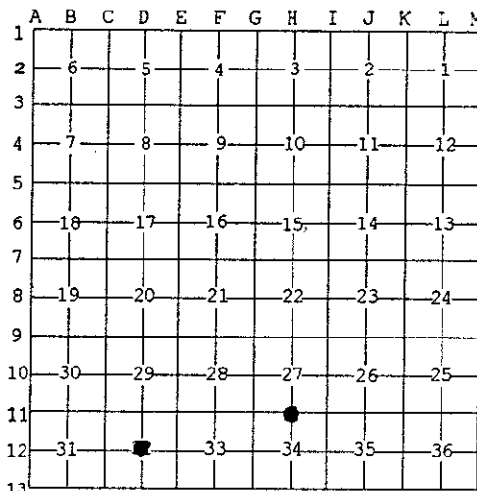
Register of Deeds Stamp & File Number

D-12 [C1/4 COR SEC 32] H-11 [N1/4 COR SEC 34]

4. Lot No. _____, Recorded Plat _____
 5. Private Claims _____

I, M.P. DAVIS, in a field survey on MAY, 00 do hereby state that under requirements of P.A. 74, Michigan P.A. of 1970, the corner points mentioned in lines 1 and 2 above were in conformance with regulations and rules therefore as required in the current manual of survey instructions of the United States Department of the Interior, Bureau of Land Management or by a decree of a Court of Law and /or that the corner points mentioned in lines 3, 4 and 5 above were in conformance with the rules of the Michigan Board of Land Surveyors or by a Decree of a Court of Law; established, re-established, monumented, recovered, found as expressed below.

NOTE: Not more than 2 corners, all in the same town and range, may be recorded on this certificate.



A. Description of original monument and accessories and/or subsequent restoration:

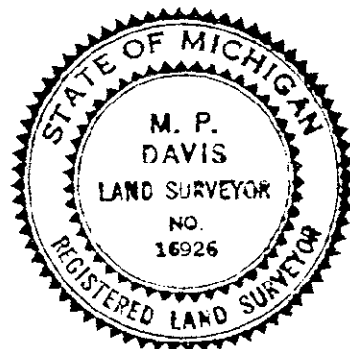
D-12 [C1/4 COR SEC 32] NOT SET IN ORIGINALS
 M.S.McNABB-1920-ESTABLISHED AT INTERSECTION OF 1/4 LINES-SET AXEL 4' LONG-NO BT'S NOTED

H-11 [N1/4 COR SEC 34] A.MERRYWEATHER, D.S.-1846-WOOD POST-(MAPLE 36" S80°W 20 LINKS)(BEECH 08" S80°E 16 LINKS)
 C.E.BROTHERTON - 1882 - ORIGINALS GONE, ESTABLISHED 1/2 DISTANCE BETWEEN CORNERS (NO WIT'S NOTED OR DESCRIPTION OF MONUMENT GIVEN.)
 D.A.BROTHERTON - 1921 - NO CORNER TO BE FOUND - ESTABLISHED 1/2 DISTANCE BETWEEN CORNERS (NO WIT'S NOTED OR DESCRIPTION OF MONUMENT GIVEN.)

B. Description of corner evidence found and/or method applied in restoring or reestablishing corner:

D-12 [C1/4 COR SEC 32] FOUND, IN PLACE, AT JCT OF FARM FENCE LINES N-S & E-W AND AXEL. ID COR MONUMENT FROM MEASUREMENTS TO ADJOINING 1/4 COR'S AS PER THE RECORDS OF McNABB. ACCEPTED EXISTING MONUMENT AS BEING A CAREFUL AND FAITHFUL ESTABLISHMENT OF THE COR POSITION.

H-11 [N1/4 COR SEC 34] NO CORNER EVIDENCE FOUND. REESTABLISHED THE CORNER POSITION AT THE MIDPOINT BETWEEN AND ON LINE WITH THE SECTION CORNERS 1/2 MILE EAST AND WEST. CORNER POSITION FALLS IN LINE WITH ANCIENT FARM FENCES NORTH AND SOUTH AND NEAR THE C/L OF THE EAST - WEST COUNTY ROAD.



C. Description of monument for corner and accessories established to perpetuate locating the position of the corner:

D-12 SET, OVER EXISTING MONUMENT, A BERNTSEN A1NB30 ALUM MONUMENT WITH THE CAP STAMPED TO ID THE CORNER POSITION.
 ASH 11" CEDAR 05" ELM 05" MAPLE 19" SURVEY MONUMENT SIGN POST
 N17°W N29°E S89°E S63°W SOUTH
 56.37' 37.20' 31.87' 61.68' 1.41'(TO FACE)

H-11 SET A 5/8" X 18" REBAR W/A 3-1/4" ALUM CAP STAMPED TO ID THE COR POSITION & RAISED TO GRADE W/A MONUMENT BOX.
 ELM 17" POWER POLE POWER POLE SURVEY MONUMENT SIGN POST
 N42°W N05°E S05°W S51°W
 68.26' 36.82' 31.25' 36.41'(TO FACE)

NOTE: BEARINGS TO REFERENCE OBJECTS ARE MAGNETIC-DISTANCES ARE TO A NAIL W/A DELTA COUNTY REFERENCE TAG, UNLESS OTHERWISE NOTED.

Signed by M.P. Davis Date 7/13/00
 Surveyor's Michigan License No. 16926