

**SURVEY & REMONUMENTATION**

**OCT 03 2000**

**SECTION**

Approved By Delta County  
Land Survey Remonumentation  
Peer Group Under Act 345 of  
P.A. of 1990 On July 12, 2000  
Chris Schmeling  
Acting Chairman

**LAND CORNER RECORDATION CERTIFICATE**  
Filing Requirement of Act 74, Mich. P.A. 1970

For corners in

<u>DELTA</u> (County)	Located In:	Corner Code #
1. Public Land Survey	T <sub>40</sub> N R <sub>23</sub> W	E-02 ✓
	T <sub>40</sub> N R <sub>23</sub> W	G-02
2. Property Controlling in Section	T R	
	T R	
3. Miscellaneous Property in Sec.	S T R	
	S T R	

RECORDED 28 July 2000

AT 9:00 O'CLOCK a.m.

LIBER 9 PAGE 214  
William C. Brown

DELTA COUNTY MI REG. OF DEEDS

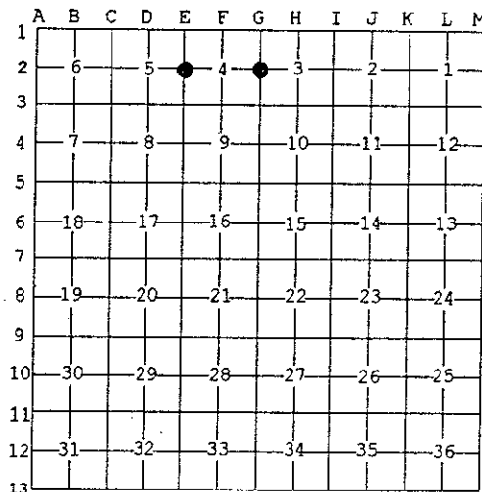
Register of Deeds Stamp & File Number

E-02 [W1/4 COR SEC 4] G-02 [W1/4 COR SEC 3]

4. Lot No. \_\_\_\_\_, Recorded Plat \_\_\_\_\_  
5. Private Claims \_\_\_\_\_

I, M.P. DAVIS, in a field survey on MAY, 2000 do hereby state that under requirements of P.A. 74, Michigan P.A. of 1970, the corner points mentioned in lines 1 and 2 above were in conformance with regulations and rules therefore as required in the current manual of survey instructions of the United States Department of the Interior, Bureau of Land Management or by a decree of a Court of Law and /or that the corner points mentioned in lines 3, 4 and 5 above were in conformance with the rules of the Michigan Board of Land Surveyors or by a Decree of a Court of Law; established, re-established, monumented, recovered, found as expressed below:

NOTE: Not more than 2 corners, all in the same town and range, may be recorded on this certificate.

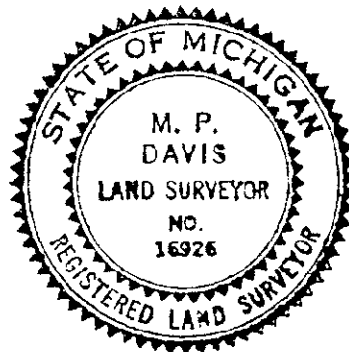


**A. Description of original monument and accessories and/or subsequent restoration:**

- E-02 [W1/4 COR SEC 4] A.MERRYWEATHER, D.S.-1846-SET POST-(MAPLE 16" N50°W 30 LINKS)(MAPLE 06" S30°E 30 LINKS) D.A.BROTHERTON - 1912 - SHOWS CORNER IN PLACE, NO DESCRIPTION OF MONUMENT GIVEN OR BT'S NOTED IN HIS RECORDS.
- G-02 [W1/4 COR SEC 3] A. MERRYWEATHER, D.S. 1846 - (MAPLE 24" S58°E 14 LINKS) (BEECH 08" N48°W 30 LINKS) D.A.BROTHERTON - 1912 - SHOWS CORNER IN PLACE, NO DESCRIPTION OF MONUMENT GIVEN OR BT'S NOTED IN HIS RECORDS.

**B. Description of corner evidence found and/or method applied in restoring or reestablishing corner:**

- E-02 [W1/4 COR SEC 4] FOUND IN PLACE, AT THE JUNCTION OF FARM FENCES SOUTH AND EAST, THE ROTTED REMAINS OF AN APPROXIMATE 3" WOOD POST. CULTIVATED FARM FIELDS EXIST IN ALL 4 QUADRANTS, NO OTHER ACCESSORIES OBSERVED. DISTANCE AND ALIGNMENT ALONG THE E-W 1/4 LINE OF SEC 4 CHECKS WELL WITH THE 1912 SURVEY RECORDS OF D.A.BROTHERTON. ACCEPTED EXISTING MONUMENT AS BEING THE BEST AVAILABLE EVIDENCE AS TO THE LOCATION OF THE POSITION OF THE ORIGINAL CORNER.
- G-02 [W1/4 COR SEC 3] FOUND IN PLACE A 5/8" X 18" IRON PIN IN THE APPROXIMATE CENTER OF THE E-W COUNTY ROAD AND IN LINE WITH ANCIENT FARM OCCUPATION LINES NORTH & SOUTH. NO OTHER ACCESSORIES OBSERVED AS THERE ARE CULTIVATED FARM FIELDS IN ALL 4 QUADRANTS. DISTANCE AND ALIGNMENT ALONG THE E-W 1/4 LINE OF SEC 4 CHECKS WELL WITH THE 1912 SURVEY RECORDS OF D.A.BROTHERTON. ACCEPTED EXISTING MONUMENT AS BEING THE BEST AVAILABLE EVIDENCE AS TO THE LOCATION OF THE POSITION OF THE ORIGINAL CORNER.



**C. Description of monument for corner and accessories established to perpetuate locating the position of the corner:**

- E-02 REPLACED WOOD POST W/A BERNTSEN A1NB30 ALUM MONUMENT WITH THE CAP STAMPED TO ID THE CORNER POSITION. SURVEY MONUMENT SIGN POST NORTH 1.45' (TO FACE) CULTIVATED FARM FIELDS IN ALL FOUR QUADRANTS NO ACCESSORIES IMMEDIATELY AVAILABLE
- G-02 SET, ON EXISTING MONUMENT AND 6± BELOW GRADE, A 3-1/4" ALUM CAP STAMPED TO ID THE CORNER POSITION. POWER POLE SURVEY MONUMENT SIGN POST 5/8" X 18" REBARS W/A 2" ALUM DELTA COUNTY WIT. CAP  
N66°W 56.40' NORTH 25.25' N45°E 16.40' S45°E 23.47' S45°W 25.58'

NOTE: BEARINGS TO REFERENCE OBJECTS ARE MAGNETIC-DISTANCES ARE TO A NAIL W/A DELTA COUNTY REFERENCE TAG, UNLESS OTHERWISE NOTED.

Signed by M.P. DAVIS Date 7/13/00  
Surveyor's Michigan License No. 16926