

SURVEY & REMONUMENTATION

OCT 03 2000

SECTION

LAND CORNER RECORDATION CERTIFICATE
 Filing Requirement of Act 74, Mich. P.A. 1970

Approved By Delta County
 Land Survey Remonumentation
 Peer Group Under Act 345 of
 P.A. Of 1990 On July 12, 2000
Walter C. Thomas
 Acting Chairman

For corners in

<u>DELTA</u> (County)	Located In:	Corner Code #
1. Public Land Survey	T 40 N R 23 W	F-02
	T 40 N R 23 W	F-11 <input checked="" type="checkbox"/>
	T R	
	T R	
2. Property Controlling in Section	S T R	
	S T R	
3. Miscellaneous Property in Sec.	S T R	
	S T R	

RECORDED 28 July 2000
 9:00 O'CLOCK a.m.
 LIBER 9 PAGE 215
Walter C. Thomas
 DELTA COUNTY MI REG. OF DEEDS

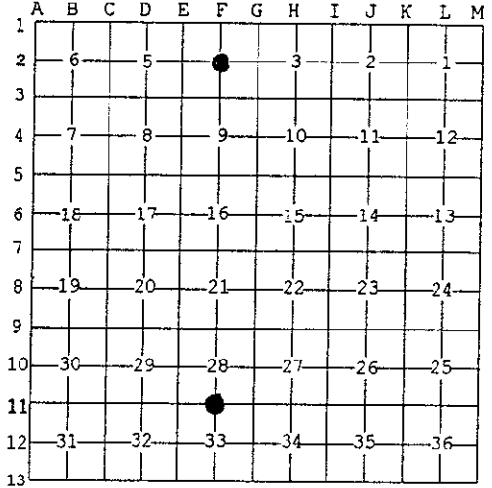
Register of Deeds Stamp & File Number

F-02 [C1/4 COR SEC 4] F-11 [N1/4 COR SEC 33]

4. Lot No. _____, Recorded Plat _____
 5. Private Claims _____

I, M.P. DAVIS, in a field survey on MAY, 2000 do hereby state that under requirements of P.A. 74, Michigan P.A. of 1970, the corner points mentioned in lines 1 and 2 above were in conformance with regulations and rules therefore as required in the current manual of survey instructions of the United States Department of the Interior, Bureau of Land Management or by a decree of a Court of Law and /or that the corner points mentioned in lines 3, 4 and 5 above were in conformance with the rules of the Michigan Board of Land Surveyors or by a Decree of a Court of Law, established, re-established, monumented, recovered, found as expressed below:

NOTE: Not more than 2 corners, all in the same town and range, may be recorded on this certificate.



A. Description of original monument and accessories and/or subsequent restoration:

- F-02 [C1/4 COR SEC 4] NOT SET IN ORIGINALS
 D.A.BROTHERTON - 1912 - SET IRON STAKE AT INTERSECCTION OF 1/4 LINES - NO NEW BT'S NOTED
- F-11 [N1/4 COR SEC 33] A. MERRYWEATHER, D.S. 1846 - (BEECH 12" N23°W 08 LINKS) (MAPLE 18" S10°W 22 LINKS)
 C.E.BROTHERTON - 1882 - ID FROM ORIGINAL SW BT - SET AND MARKED STAKE - NO NEW BT'S NOTED
 M.S.McNABB- 1921 - IRON STAKE IN PLACE - FENCE POST N40°W 24.9'

B. Description of corner evidence found and/or method applied in restoring or reestablishing corner:

- F-02 [C1/4 COR SEC 4] FOUND IN PLACE AND 12"± BELOW ROAD SURFACE A 3/4" X 30" IRON PIN. CORNER MONUMENT AS FOUND FALLS IN LINE WITH ANCIENT FARM OCCUPATION NORTH AND SOUTH AND CHECKS WELL WITH BROTHERTON'S 1912 MEASUREMENTS ALONG THE EAST-WEST 1/4 LINE. BASED UPON MY DETERMINATIONS THE EXISTING MONUMENT WAS FOUND TO BE 0.97' NORTH OF A DIRECT LINE BETWEEN THE 1/4 CORNERS. ACCEPTED EXISTING MONUMENT AS BEING A CAREFUL AND FAITHFUL ESTABLISHMENT OF THE CORNER POSITION.
- F-11 [N1/4 COR SEC 33] NO CORNER EVIDENCE FOUND. RECOVERED McNABB'S C1/4 & S1/4 COR'S OF SEC 33, EXTENDED A LINE NORTH FROM THE S1/4 COR THRU THE C1/4 COR AND REESTABLISHED THE N1/4 ON THIS LINE AND 42.0 FEET SOUTH OF A DIRECT LINE BETWEEN THE NE & NW CORNERS OF SEC 33 IN ACCORDANCE WITH THE 1882 RECORDS OF C.E.BROTHERTON. NO DISTANCE FOR THE NORTH 1/2 MILE OF THE N-S1/4 LINE OF SEC 33 WAS GIVEN IN THE RECORDS OF McNABB FOR COMPARISON. ACCEPTED THIS LOCATION AS BEING THE BEST AVAILABLE EVIDENCE AS TO THE POSITION OF THE ORIGINAL CORNER.



C. Description of monument for corner and accessories established to perpetuate locating the position of the corner:

- F-02 SET OVER EXISTING MONUMENT, A 3-1/4" ALUM CAP STAMPED TO ID THE CORNER POSITION.

POWER POLE	SURVEY MONUMENT SIGN POST	CUT ON EAST END OF CMP @ FARM DR. SOUTH	DRILL HOLE IN FIELD STONE
N23°W	NORTH	S38°E	S47°W
35.04'	26.85'	35.50'	35.02'
- F-11 SET A 5/8" X 18" REBAR W/A 3-1/4" ALUM CAP STAMPED TO ID THE CORNER POSITION.

POWER POLE	TELEPHONE POLE	CORNER FENCE POST	NW COR CONC DR @ HOUSE NO. 4297	C/L COUNTY ROAD 416
S74°E	N04°E	S09°E	S50°W	NORTH
65.65'	55.33'	15.10'	77.12	18.00'

NOTE: BEARINGS TO REFERENCE OBJECTS ARE MAGNETIC-DISTANCES ARE TO A NAIL W/A DELTA COUNTY REFERENCE TAG, UNLESS OTHERWISE NOTED.

Signed by M.P. Davis Date 7/13/00
 Surveyor's Michigan License No. 16926