

SURVEY & REMONUMENTATION

OCT 03 2000

SECTION

LAND CORNER RECORDATION CERTIFICATE
 Filing Requirement of Act 74, Mich. P.A. 1970

Approved By Delta County
 Land Survey Remonumentation
 Peer Group Under Act 345 of
 P.A. Of 1990 On July 11, 2000
Robert B. Johnson
 Acting Chairman

For corners in

<u>DELTA</u> (County)	Located In:	Corner Code #
1. Public Land Survey	T40 N R 23 W	G-03
	T40 N R 23 W	G-10 ✓
2. Property Controlling in Section	T R	
	T R	
3. Miscellaneous Property in Sec.	S T R	
	S T R	

RECORDED 28 July 2000
 AT 9:00 O'CLOCK a.m.
 LIBER 9 PAGE 213
Walter C. Thomas
 DELTA COUNTY MI REG. OF DEEDS

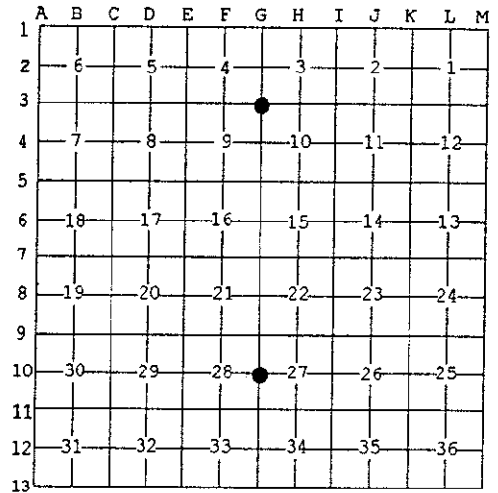
Register of Deeds Stamp & File Number

G-03 [NW COR SEC 10] G-10 [W1/4 COR SEC 27]

4. Lot No. _____, Recorded Plat _____
 5. Private Claims _____

I, M.P. DAVIS, in a field survey on MAY, 2000 do hereby state that under requirements of P.A. 74, Michigan P.A. of 1970, the corner points mentioned in lines 1 and 2 above were in conformance with regulations and rules therefore as required in the current manual of survey instructions of the United States Department of the Interior, Bureau of Land Management or by a decree of a Court of Law and /or that the corner points mentioned in lines 3, 4 and 5 above were in conformance with the rules of the Michigan Board of Land Surveyors or by a Decree of a Court of Law; established, re-established, monumented, recovered, found as expressed below:

NOTE: Not more than 2 corners, all in the same town and range, may be recorded on this certificate.

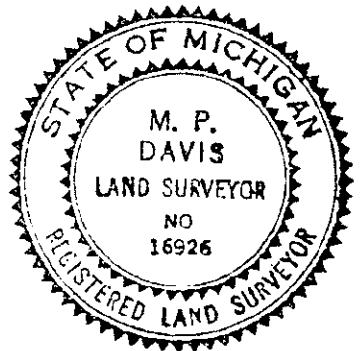


A. Description of original monument and accessories and/or subsequent restoration:

- G-03 [NW COR SEC 10] A.MERRYWEATHER,D.S.-1846-SET POST-(HEMLOCK 10" N40°W 02 LINKS)(HEMLOCK 12" S42°E 27 LINKS) NO RECORD EVIDENCE OF CORNER RECOVERY AND/OR SUBSEQUENT REMONUMENTATION
- G-10 [W1/4 COR SEC 27] A. MERRYWEATHER, D.S. 1846 - (CEDAR 30" N48°E 15 LINKS) (CEDAR 26" S67°W 17 LINKS) D.A.BROTHERTON - 1895 - ORIGINALS IN PLACE

B. Description of corner evidence found and/or method applied in restoring or reestablishing corner:

- G-03 [NW COR SEC 10] CHAINED SOUTH FROM THE W1/4 COR OS SEC 3 AT 1345± SOUTH OBSERVED A FARM FENCE TO THE EAST, AT 2693± SOUTH FOUND A 1" IRON PIPE AT THE JCT OF FARM FENCES TO THE SOUTH AND EAST & WEST. CULTIVATED FARM FIELDS EXIST IN THE NE & NW QUADRANTS AND THE SE & SW QUADS HAVE RECENTLY BEEN CLEAR CUT, NO OTHER ACCESSORIES WERE OBSERVED. ACCEPTED EXISTING MONUMENT AS BEING THE BEST AVAILABLE EVIDENCE AS TO THE LOCATION OF THE POSITION OF THE ORIGINAL CORNER.
- G-10 [W1/4 COR SEC 27] NO CORNER EVIDENCE FOUND. REESTABLISHED CORNER AT JCT OF FARM FENCES EAST, WEST AND NORTH AND C/L OF FARM LANE TO THE SOUTH. DISTANCES TO ADJOINING CORNERS CHECK WELL WITH BROTHERTON'S 1895 SUBDIVISION SURVEY OF SEC 28. ACCEPTED AS BEING THE BEST AVAILABLE EVIDENCE AS TO THE LOCATION OF THE POSITION OF THE ORIGINAL CORNER.



C. Description of monument for corner and accessories established to perpetuate locating the position of the corner:

- G-03 SET, OVER EXISTING MONUMENT, A BERNTSEN A1NB30 ALUM MONUMENT WITH THE CAP STAMPED TO ID THE CORNER POSITION.
 SURVEY MONUMENT SIGN POST MAPLE 13" MAPLE 15"
 NORTH S54°E S60°W
 1.45' (TO FACE) 29.04' 27.13'
- G-10 SET A 5/8" X 18" REBAR W/A 3-1/4" ALUM CAP STAMPED TO ID THE CORNER POSITION.
 SURVEY MONUMENT SIGN POST CEDAR 06" SPRUCE 06" TAMARACK 05" POWER POLE
 NORTH N45°E S45°E S45°W S83°E
 2.10' 75.80' 44.09' 93.78' 17.65'

NOTE: BEARINGS TO REFERENCE OBJECTS ARE MAGNETIC-DISTANCES ARE TO A NAIL W/A DELTA COUNTY REFERENCE TAG, UNLESS OTHERWISE NOTED.

Signed by M.P. Davis Date 7/13/00
 Surveyor's Michigan License No. 16926