

SURVEY & REMONUMENTATION

FEB 18 1994

COMMISSION

LAND CORNER RECORDATION CERTIFICATE
Filing Requirement of Act 74, Mich. P.A. 1970

Approved By Delta County
Land Survey Remonumentation
Peer Group Under Act 345 Of
P.A. Of 1990 On Nov. 30, 1994
Shelley B. Schumaker
Acting Chairman

For corners in

DELTA

(County)

Located In:

Corner Code #

1. Public Land Survey	T	40 NR	23 W	I-9 & J-7
	T		R	
	T		R	
	T		R	
2. Property Controlling in Section	S		R	
	S		R	
3. Miscellaneous Property in Sec.	S		R	
	S		R	

Recorded January 21, 1994

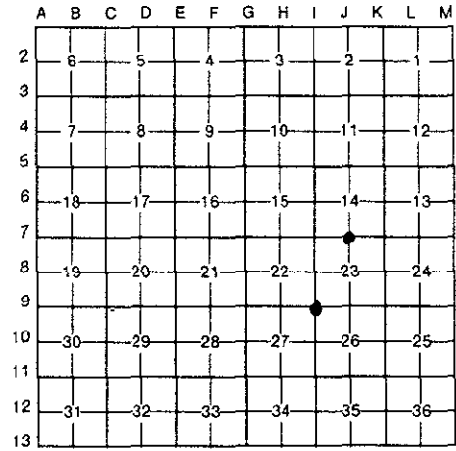
9:00 o'clock AM in Liber 7 Page 366

William C. Thomas
Reg. of Deeds,
Delta County, Michigan

Register of Deeds Stamp & File Number

4. Lot No. _____, Recorded Plat _____
5. Private Claims _____
I-9 [NW COR SEC 26] J-7 [N1/4 COR SEC 23]

I, M.P. DAVIS, in a field survey on DECEMBER, 19 93, do hereby certify that under requirements of P.A. 74, Michigan P.A. of 1970, the corner points mentioned in lines 1 and 2 above were in conformance with regulations and rules therefore as required in the current manual of survey instructions of the United States Department of the Interior, Bureau of Land Management or by a decree of a Court of Law and/or that the corner points mentioned in lines 3, 4 and 5 above were in conformance with the rules of the Michigan Board of Land Surveyors or by a Decree of a Court of Law; established, re-established, monumented, re-monumented, recovered, found as expressed below:



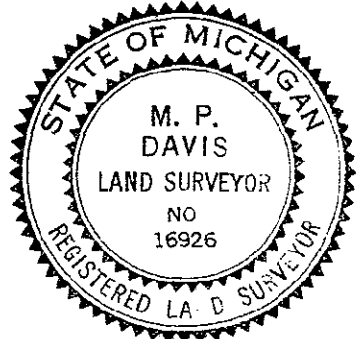
NOTE: Not more than 4 corners, all in the same town and range, may be recorded on this certificate.

A. Description of original monument and accessories and/or subsequent restoration:

- I-9 [NW COR SEC 26] WOOD POST - A. MERRYWEATHER, D.S. - 1846 (BIRCH 22'-S83°E-18 LINKS) (HEMLOCK 14'-N60°E-33 LINKS) D.A. BROTHERTON - 1895 - ID CORNER POSITION FROM BOTH "GLO" BT'S - NO NEW WIT'S NOTED M.S. McNABB - 1938 - SET I.P. WHERE OLD STAKE STOOD & BROTHERTON'S DISTANCE WEST OF N1/4 COR SEC 26 (PP-N57°E-44') (IN CENTER LINE E-W COUNTY ROAD, IN LINE WITH FENCE SOUTH & 10' WEST OF CENTER LINE COUNTY ROAD NORTH.
- J-7 [N1/4 COR SEC 23] WOOD POST - A. MERRYWEATHER, D.S. - 1846 (BIRCH 28'-S42°E-13 LINKS) (HEMLOCK 10'-N38°W-15 LINKS) M.S. McNABB - 1913 - ID CORNER POSITION FROM BOTH ORIGINALS AND SET I.P.

B. Description of corner evidence found and/or method applied in restoring or reestablishing corner:

- I-9 [NW COR SEC 26] NO EVIDENCE OF McNABB'S I.P. AS IT HAS APPARENTLY DESTROYED DURING ROAD CONSTRUCTION. RESET CORNER POSITION IN CENTER LINE OF E-W COUNTY ROAD & IN LINE WITH FENCE LINE SOUTH, WHICH PLACES THE CORNER 10' WEST OF CENTER LINE OF COUNTY ROAD TO THE NORTH. ACCEPTED THIS POSITION AS BEING A CAREFUL & FAITHFUL PERPETUATION OF THE POSITION OF THE ORIGINAL CORNER.
- J-7 [N1/4 COR SEC 23] NO EVIDENCE OF McNABB'S I.P. AS IT HAS APPARENTLY BEEN DESTROYED DURING ROAD CONSTRUCTION. FOUND NW COR OF SEC 23 & THE W1/16 (McNABB'S IRON PIN) EXTENDED LINE FROM NW COR THRU THE W1/16 AND RESET 1/4 COR ON THIS LINE AT PROPORTIONATE DISTANCE EAST OF OF THE W1/16 COR. ACCEPTED THIS POSITION AS BEING A CAREFUL & FAITHFUL PERPETUATION OF THE POSITION OF THE ORIGINAL CORNER.



C. Description of monument for corner and accessories established to perpetuate locating the position of the corner:

- I-9 SET, INSIDE A MON BOX, A 5/8" X 18" REBAR W/A 3-1/4" ALUMN CAP STAMPED TO ID THE CORNER POSITION
POWER POLE MAPLE 5" POWER POLE SURVEY MONUMENT SIGN POST
N22°W N52°E S33°W SOUTH
31.35' (TO FACE) 81.77' 31.28' (TO FACE) 18.40" (TO FACE)
- J-7 SET, INSIDE MON BOX, A 5/8" X 18" REBAR W/A 3-1/4" ALUMN CAP STAMPED TO ID THE CORNER POSITION
MAPLE 9" MAPLE 8" CEDAR 6" SURVEY MONUMENT SIGN POST
N22°W S6°E S40°W N45°E
40.22' 39.65' 41.54' 21.42' (TO FACE)

NOTE: BEARINGS TO REFERENCE OBJECTS ARE MAGNETIC & DISTANCES ARE TO A NAIL IN THE CENTER OF THE OBJECT UNLESS OTHERWISE NOTED

Signed by M.P. Davis Date 12/30/93
Surveyor's Michigan License No. 16926