

SURVEY & REMONUMENTATION

OCT 03 2000

SECTION

Approved By Delta County
Land Survey Remonumentation
Peer Group Under Act 345 of
P.A. Of 1990 On July 12, 2000
Robert Schmeling
Acting Chairman

LAND CORNER RECORDATION CERTIFICATE
Filing Requirement of Act 74, Mich. P.A. 1970

For corners in

<u>DELTA</u> (County)	Located In:	Corner Code #
1. Public Land Survey	T <u>40</u> N R <u>23</u> W	J-03 ✓
	T <u>40</u> N R <u>23</u> W	J-05
	T _____ R _____	_____
	T _____ R _____	_____
2. Property Controlling in Section	S _____ T _____ R _____	_____
	S _____ T _____ R _____	_____
3. Miscellaneous Property in Sec.	S _____ T _____ R _____	_____
	S _____ T _____ R _____	_____

RECORDED 28 July 2000
AT 9:00 O'CLOCK a.m.
LIBER 9 PAGE 218
William C. Thomas
DELTA COUNTY MI REG. OF DEEDS

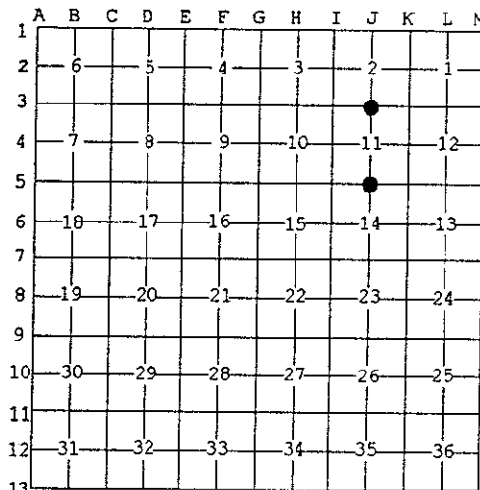
Register of Deeds Stamp & File Number

4. Lot No. _____, Recorded Plat _____
5. Private Claims _____

J-03 [N1/4 COR SEC 11] J-05 [N1/4 COR SEC 14]

I, M.P. DAVIS, in a field survey on JAN/ MAY, 2000 do hereby state that under requirements of P.A. 74, Michigan P.A. of 1970, the corner points mentioned in lines 1 and 2 above were in conformance with regulations and rules therefore as required in the current manual of survey instructions of the United States Department of the Interior, Bureau of Land Management or by a decree of a Court of Law and /or that the corner points mentioned in lines 3, 4 and 5 above were in conformance with the rules of the Michigan Board of Land Surveyors or by a Decree of a Court of Law; established, re-established, monumented, recovered, found as expressed below:

NOTE: Not more than 2 corners, all in the same town and range, may be recorded on this certificate.



A. Description of original monument and accessories and/or subsequent restoration:

J-03 [N1/4 COR SEC 11] A.MERRYWEATHER,D.S.-1846-SET POST-(HEMLOCK 14" S80°E 18 LINKS)(HEMLOCK 10" S70°W 11 LINKS)
NO RECORD EVIDENCE OF CORNER RECOVERY AND/OR SUBSEQUENT REMONUMENTATION

J-05 [N1/4 COR SEC 14] A. MERRYWEATHER, D.S. 1846 - (CEDAR 18" N15°E 08 LINKS) (HEMLOCK 06" S15°W 15 LINKS)
M.S.McNABB-1913-ORIGINALS GONE, ESTABLISHED COR 1/2 DISTANCE BETWEEN CORNERS - SET BT STAKES NE & SW 33'

B. Description of corner evidence found and/or method applied in restoring or reestablishing corner:

J-03 [N1/4 COR SEC 11] FOUND IN PLACE A 1/2" X 36" REBAR ENCASED IN A 4" X 4" X 36" CONC MONUMENT W/A 2-1/2" BRASS CAP STAMPED TO ID THE CORNER POSITION AS SET BY MYSELF IN 1979. IN 1979 ROBT. E. SCHMELING RLS (RETIRED-MEAD PAPER CORP) INDICATED TO ME THAT IN 1961 WHILE WORKING IN THIS AREA THAT HE RECOVERED AN ANCIENT SQ'D POST AND PERPETUATED IT WITH THE A 1-1/2" IRON PIPE. THE CONC MONUMENT NOW IN PLACE REPRESENTS A PERPETUATION OF THE SCHMELING MONUMENT. ACCEPTED THE EXISTING MONUMENT AS BEING THE BEST AVAILABLE EVIDENCE AS TO THE LOCATION OF THE POSITION OF THE ORIGINAL CORNER.

J-05 [N1/4 COR SEC 14] FOUND IN PLACE A 1/2" X 36" REBAR ENCASED IN A 4" X 4" X 36" CONC MONUMENT W/A 2-1/2" BRASS CAP STAMPED TO ID THE CORNER POSITION AS SET BY MYSELF IN 1979. THIS CORNER POSITION WAS ESTABLISHED BY MYSELF FROM RETRACEMENT OF McNABB'S 1913 PARTIAL SUBDIVISION OF SEC 14. RECOVERY OF McNABB CORNERS AND/OR CORNER POSITIONS NOW IDENTIFIED BY OCCUPANCY AND IMPROVEMENTS INDICATES HIS CORNER NOT TO HAVE BEEN SET "1/2 DIST BETWEEN COR;S" BUT AT A POINT APPROXIMATELY 24' TO THE WEST OF THE MIDPOINT, AS OCCUPATION AND IMPROVEMENTS HAVE BEEN MADE AND DEVELOPED FROM THIS POSITION I HAVE ACCEPTED IT AS BEING REESTABLISHMENT OF THE COR.

C. Description of monument for corner and accessories established to perpetuate locating the position of the corner:

J-03 DID NOT DISTURB EXISTING MONUMENT AND NOTED THE FOLLOWING NEW BT'S
SURVEY MONUMENT SIGN POST CEDAR 08" CEDAR 10" SPRUCE 18"
EAST N14°W S86°W S20°E
2.03' (TO FACE) 8.75' 19.48' 17.31'

J-05 DID NOT DISTURB EXISTING MONUMENT AND NOTED NEW BT'S
SURVEY MONUMENT SIGN POST CEDAR 12" CEDAR 05" SPRUCE 12"
S44°E N22°W N71°E S32°W
2.36' (TO FACE) 11.84' 23.02' 17.35'

NOTE: BEARINGS TO REFERENCE OBJECTS ARE MAGNETIC-DISTANCES ARE TO A NAIL W/A DELTA COUNTY REFERENCE TAG, UNLESS OTHERWISE NOTED.

Signed by M.P. DAVIS
Surveyor's Michigan License No. 16926

Date 7/13/00

