

SURVEY & REMONUMENTATION

OCT 03 2000

SECTION

Delta County
 Registration
 Under Act 345 of
 P.A. July 12, 2000
Walter C. Thomas
 Acting Chairman

LAND CORNER RECORDATION CERTIFICATE
 Filing Requirement of Act 74, Mich. P.A. 1970

For corners in

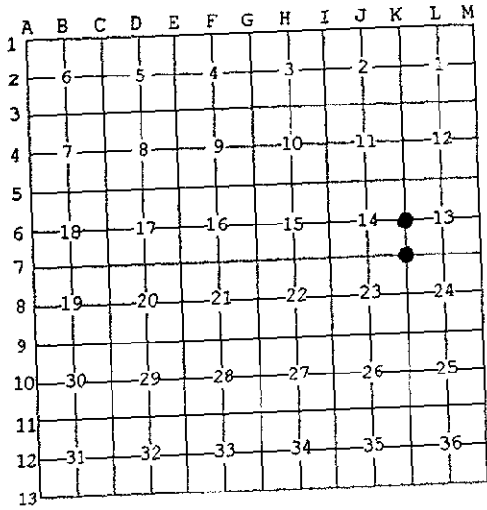
DELTA (County)	Located In:	Corner Code #
1. Public Land Survey	T 40 N R 24 W	K-06
	T 40 N R 24 W	K-07 ✓
	T R	
	T R	
2. Property Controlling in Section	S T R	
	S T R	
3. Miscellaneous Property in Sec.	S T R	
	S T R	

RECORDED 28 July 2000
 AT 9:00 O'CLOCK a.m.
 LIBER 9 PAGE 230
Walter C. Thomas
 DELTA COUNTY MI REG. OF DEEDS
 Register of Deeds Stamp & File Number

4. Lot No. _____, Recorded Plat _____
 5. Private Claims _____

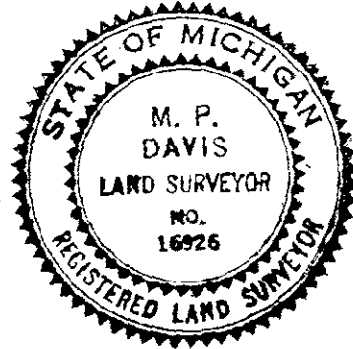
I, M.P. DAVIS, in a field survey on JANUARY, 00 do hereby state that under requirements of P.A. 74, Michigan P.A. of 1970, the corner points mentioned in lines 1 and 2 above were in conformance with regulations and rules therefore as required in the current manual of survey instructions of the United States Department of the Interior, Bureau of Land Management or by a decree of a Court of Law and/or that the corner points mentioned in lines 3, 4 and 5 above were in conformance with the rules of the Michigan Board of Land Surveyors or by a Decree of a Court of Law; established, re-established, monumented, recovered, found as expressed below:

NOTE: Not more than 2 corners, all in the same town and range, may be recorded on this certificate.



- A. Description of original monument and accessories and/or subsequent restoration:
- K-06 [W1/4 COR SEC 13] HARVEY MELLEN, D.S.-1852-WOOD POST (HEMLOCK 14" S58°E 18 LINKS)(HEMLOCK 12" S16°W 20 LINKS M.S.McNABB-1919-ORIGINALS GONE SET 1/2 DISTANCE BETWEEN CORNERS BT STAKES NW & SE 33' M.S.McNABB-1934-FROM PREVIOUS SURVEY- CEDAR STUMP S80°W 40.25' FENCE EAST-SOUTH 5.8'
 - K-07 [NW COR SEC 24] HARVEY MELLEN, D.S.-1852- WOOD POST (Y.BIRCH 16" S41°E 44 LINKS)(CEDAR 22" N60°W 24 LINKS) M.S.McNABB-1917-ID FORM ORIGINAL Y.BIRCH BT SE - SET BT STAKES NW & SE 33' M.S.McNABB-1919-ID FROM PRVIOUS SURVEY M.S.McNABB-1934-ROAD ALIGNMENT SURVEY FOR COUNTY ROAD D-7-IRON & WOOD STAKE IN PLACE - GATE POST S55°W 19.7'

- B. Description of corner evidence found and/or method applied in restoring or reestablishing corner:
- K-06 [W1/4 COR SEC 13] NO CORNER MONUMENT FOUND-REESTABLISHED THE CORNER POSITION FROM McNABB'S CEDAR STUMP BT TO THE SW & 5.8' NORTH OF ANCIENT FENCE LINE TO THE EAST. ACCEPTED AS BEING A CAREFUL & FAITHFULL REESTABLISHMENT OF THE CORNER POSITION.
 - K-07 [NW COR SEC 24] NO CORNER EVIDENCE FOUND - REESTABLISHED CORNER POSITION ON LINE WITH THE NW AND W1/4 COR'S OF SEC 13 T40N R24 AND AT EQUAL DISTANCE SOUTH OF THE W/4 COR AS PER THE RECORDS OF M.S.McNABB. ACCEPTED AS BEING THE BEST AVAILABLE EVIDENCE AS TO THE LOCATION OF THE POSITION OF THE ORIGINAL CORNER.



- C. Description of monument for corner and accessories established to perpetuate locating the position of the corner:
- K-06 SET A 5/8" X 18" REBAR W/A 3-1/4" ALUM CAP STAMPED TO ID THE CORNER POSITION & RAISED TO GRADE W/A MONUMENT BOX
 CEDAR 09" ASH 07" SPRUCE 22" SURVEY MONUMENT SIGN POST
 N51°E S80°W S45°E N68°W
 52.63' 64.22' 38.80' 26.50' (TO FACE)
 - K-07 SET A 5/8" X 18" REBAR W/A 3-1/4" ALUM CAP STAMPED TO ID THE CORNER POSITION.
 RED PINE 08" C/L 2-1/2" STEEL GATE POST C/L 3-1/2" STEEL GATE POST C/L 5" STEEL GATE POST
 N68°E S72°E S14°W S75°W
 34.83' 84.85' 66.05' 52.35'

NOTE: BEARINGS TO REFERENCE OBJECTS ARE MAGNETIC-DISTANCES ARE TO A NAIL W/A DELTA COUNTY REFERENCE TAG, UNLESS OTHERWISE NOTED.
 Signed by M.P. Davis Date 7/13/00
 Surveyor's Michigan License No. 16926