

SURVEY & REMONUMENTATION

NOV 25 1998

SECTION

LAND CORNER RECORDATION CERTIFICATE
Filing Requirement of Act 74, Mich. P.A. 1970

Approved By Delta County
Land Survey Remonumentation
Peer Group Under Act 345 Of
P.A. Of 1990 On October 29, 1998

Robert Schmalzer
Acting Chairman

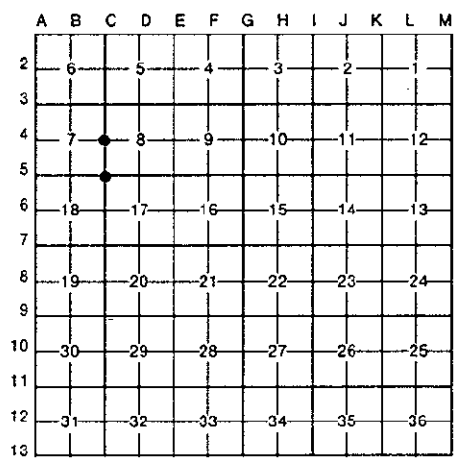
For corners in
DELTA
(County)

	Located In:	Corner Code #
1. Public Land Survey	T 41 N R 22 W	C-04 & C-05
	T _____ R _____	
	T _____ R _____	
	T _____ R _____	
2. Property Controlling in Section	S _____ T _____ R _____	
	S _____ T _____ R _____	
3. Miscellaneous Property in Sec.	S _____ T _____ R _____	
	S _____ T _____ R _____	

Recorded 16 Nov 1998
at 9:00 o'clock A.M
Liber 9 Page 105
Walter C. Thorne
Delta County, MI Reg. of Deeds

Register of Deeds Stamp & File Number

4. Lot No. _____, Recorded Plat _____
5. Private Claims _____
C-04 [W1/4 COR S.8] C-05 [NW S. 17]



I, M.P. DAVIS, in a field survey on JULY 1, 19 98, do hereby certify that under requirements of P.A. 74, Michigan P.A. of 1970, the corner points mentioned in lines 1 and 2 above were in conformance with regulations and rules therefore as required in the current manual of survey instructions of the United States Department of the Interior, Bureau of Land Management or by a decree of a Court of Law and/or that the corner points mentioned in lines 3, 4 and 5 above were in conformance with the rules of the Michigan Board of Land Surveyors or by a Decree of a Court of Law; established, re-established, monumented, re-monumented, recovered, found as expressed below:

NOTE: Not more than 4 corners, all in the same town and range, may be recorded on this certificate.

A. Description of original monument and accessories and/or subsequent restoration:
C-04 [W1/4 COR SEC 8] A.MERRYWEATHER, DS - 1847 - WOOD POST - (BURNT HEMLOCK 10°-N40°E-10 LINKS)(BURNT HEMLOCK 07°-S15°W-22 LINKS) M.S.McNABB-1927-NO CORNER EVIDENCE FOUND. ESTABLISHED CORNER 1/2 DISTANCE BETWEEN CORNERS TAMARACK STUMP 08° S32°E 7.0'

C-05 [NW COR SEC 17] A.MERRYWEATHER, DS - 1847 - WOOD POST - (BURNT HEMLOCK 12°-N80°E-12 LINKS)(BURNT HEMLOCK 09°-S65°W-17 LINKS) M.S.McNABB-1922-FOUND STAKE IN PLACE, NO EVIDENCE OF ORIGINALS. CEDAR 6° S60°E 13' BALSAM 03° S45°W 10'

B. Description of corner evidence found and/or method applied in restoring or reestablishing corner:
C-04 [W1/4 COR SEC 8] NO CORNER EVIDENCE FOUND. RE: McNABB'S RECORDS REESTABLISHED CORNER POSITION AT MIDPOINT BETWEEN SEC CORNERS 1/2 MILES NORTH AND SOUTH.

C-05 [NW COR SEC 17] NO CORNER EVIDENCE FOUND. REESTABLISHED THE CORNER POSITION BY A DISTANCE-DISTANCE INTERSECTION, UTILIZING McNABB'S RECORD DISTANCES TO SEC CORNERS 1 MILE NORTH AND EAST. ACCEPTED THIS POSITION AS BEING THE BEST AVAILABLE EVIDENCE AS TO THE POSITION OF THE ORIGINAL CORNER.



C. Description of monument for corner and accessories established to perpetuate locating the position of the corner:
C-04 SET A BERNISEN AINB30 ALUM MONUMENT WITH THE CAP STAMPED TO ID THE CORNER POSITION.
TAMARACK 02° N32°E 16.20' TAMARACK 02° S40°E 20.28' W.BIRCH 3" S47°W 13.74' SURVEY MONUMENT SIGN POST N45°W 1.13' (TO FACE)

C-05 SET A BERNISEN AINB30 ALUM MONUMENT WITH THE CAP STAMPED TO ID THE CORNER POSITION.
MAPLE 04° N34°W 45.42' W.BIRCH 08° N77°E 11.46' CEDAR 11" S46°E 39.15' CEDAR 07" S14°W 20.34' SURVEY MONUMENT SIGN POST NORTH 2.47' (TO FACE)

NOTE: BEARINGS TO REFERENCE OBJECTS ARE MAGNETIC & DISTANCES ARE TO A NAIL W/A REFERENCE TAG UNLESS OTHERWISE NOTED.

Signed by M.P. Davis Date 11/3/98

Surveyor's Michigan License No. 16926