

**SURVEY & REMONUMENTATION**

NOV 25 1998

**SECTION**

**LAND CORNER RECORDATION CERTIFICATE**

Filing Requirement of Act 74, Mich. P.A. 1970

Approved By Delta County  
Land Survey Remonumentation  
Peer Group Under Act 345 Of  
P.A. Of 1990 On June 26, 1998  
*Robert Belandier*  
Acting Chairman

For corners in  
DELTA  
(County)

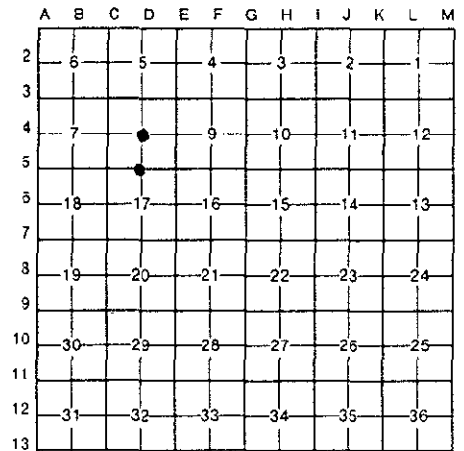
Located In: Corner Code ##

1. Public Land Survey	T	41	N	R	22	W	D-04 & D-05
	T		R				
	T		R				
	T		R				
2. Property Controlling in Section	S		T		R		
	S		T		R		
3. Miscellaneous Property in Sec.	S		T		R		
	S		T		R		

Recorded July 7 1998  
at 9:00 o'clock AM  
Liber 9 Page 93  
*Walter C. Thomas*  
Delta County Reg. of Deeds

Register of Deeds Stamp & File Number

4. Lot No. \_\_\_\_\_, Recorded Plat \_\_\_\_\_  
5. Private Claims D-04 [C1/4 COR S.8] D-05 [N1/4 S.17]



I, M.P. DAVIS, in a field survey on JULY 1 & 6, 19 98, do hereby certify that under requirements of P.A. 74, Michigan P.A. of 1970, the corner points mentioned in lines 1 and 2 above were in conformance with regulations and rules therefore as required in the current manual of survey instructions of the United States Department of the Interior, Bureau of Land Management or by a decree of a Court of Law and/or that the corner points mentioned in lines 3, 4 and 5 above were in conformance with the rules of the Michigan Board of Land Surveyors or by a Decree of a Court of Law; established, re-established, monumented, re-monumented, recovered, found as expressed below:

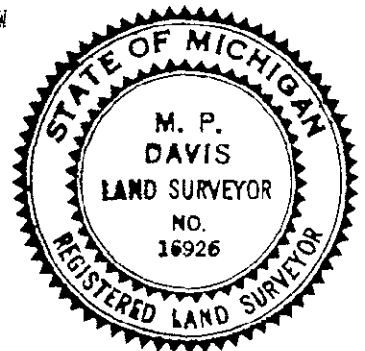
**NOTE: Not more than 4 corners, all in the same town and range, may be recorded on this certificate.**

**A. Description of original monument and accessories and/or subsequent restoration:**

- D-04 [C1/4 COR SEC 8] NOT SET IN ORIGINALS  
M.S. McNABB-1925-SET STAKE AT INTERSECTION OF 1/4 LINES - BALSAM 11" S2'E 19' & MAPLE 9" N35'E 41.8  
T.OBRIEN-1979-LCR'S L.2 PAGE 298 SET IRON BAR WITH CAP FROM McNABB'S BT'S & NOTED NEW BT'S (MAPLE 6" N45'E 29.35' & MAPLE 8" N52'W 22.35'  
D-05 [N1/4 COR SEC 17] A.MERRYWEATHER, DS - 1847 - WOOD POST - (BURNT CEDAR 06"-N14'E-13 LINKS)(BURNT CEDAR 06"-S20'W-08 LINKS)  
M.S.McNABB-1922-NO EVIDENCE OF ORIGINALS FOUND. SET 1/2 DISTANCE BETWEEN CORNERS. W.BIRCH 5' N57'W 6' - W.BIRCH 5' S40'E 19'

**B. Description of corner evidence found and/or method applied in restoring or reestablishing corner:**

- D-04 [C1/4 COR SEC 8] FOUND MOSTLY OUT OF THE GROUND A 1/2" IRON BAR W/A SURVEY ID CAP. NO EVIDENCE OF OBRIENS OR McNABB'S BT'S TO BE FOUND. RESTORED CORNER POSITION AT THE JCT OF THE N-S & E-W 1/4 LINES.  
D-05 [N1/4 COR SEC 17] NO CORNER EVIDENCE TO BE FOUND. RESTORED CORNER POSITION AT MIDPOINT BETWEEN SECTION CORNERS 1/2 MILE E & W. RE: McNABB'S RECORDS, DISTANCE BETWEEN SECTION CORNERS CHECK WELL WITH THE RECORDS OF McNABB.



**C. Description of monument for corner and accessories established to perpetuate locating the position of the corner:**

- D-04 SET A BERNTSEN ALNB30 ALUM MONUMENT WITH THE CAP STAMPED TO ID THE CORNER POSITION.  
MAPLE 07" N39'W 38.21'    MAPLE 08" N74'E 39.63'    MAPLE 05" S01'W 23.87'    MAPLE 11" S68'W 29.97'    SURVEY MONUMENT SIGN POST SOUTH 2.40' (TO FACE)  
D-05 SET A BERNTSEN ALNB30 ALUM MONUMENT WITH THE CAP STAMPED TO ID THE CORNER POSITION.  
ASH 05" N83'W 16.30'    MAPLE 10" N54'E 26.10'    MAPLE 16" S62'W 35.88'    DRILL HOLE IN 4' X 5' ROCK N57'E 66.72'    SURVEY MONUMENT SIGN POST NORTH 2.76' (TO FACE)

NOTE: BEARINGS TO REFERENCE OBJECTS ARE MAGNETIC & DISTANCES ARE TO A NAIL W/A REFERENCE TAG UNLESS OTHERWISE NOTED.

Signed by M.P. Davis 7/7/98 Date \_\_\_\_\_  
Surveyor's Michigan License No. 16926