

**SURVEY & REMONUMENTATION**

**JAN 14 1998**

**SECTION**

**LAND CORNER RECORDATION CERTIFICATE**  
**Filing Requirement of Act 74, Mich. P.A. 1970**

Approved By Delta County  
 Land Survey Remonumentation  
 Peer Group Under Act 345 Of  
 P.A. Of 1990 On 12/18, 1997  
*Robert Schmeling*  
 Acting Chairman

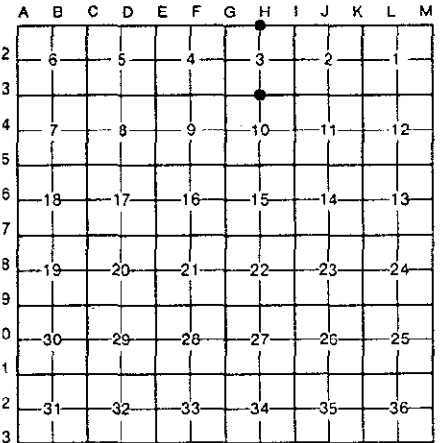
For corners in  
DELTA  
 (County)

Located In: Corner Code #

1. Public Land Survey	T	41	N	R	22	W	H-01 & H-03
	T	42	N	R	22	W	H-13
	T		R				
	T		R				
2. Property Controlling in Section	S		T		R		
	S		T		R		
3. Miscellaneous Property in Sec.	S		T		R		
	S		T		R		

Dec 19 1997  
9:00 AM  
8 275  
 Register of Deeds Stamp & File Number

4. Lot No. \_\_\_\_\_, Recorded Plat \_\_\_\_\_  
 5. Private Claims H-01 [N1/4 COR S.3 H-13 SAME CORNER] H-03 [N1/4 S.10]



I, M.P. DAVIS, in a field survey on SEPTEMBER, 19 97, do hereby certify that under requirements of P.A. 74, Michigan P.A. of 1970, the corner points mentioned in lines 1 and 2 above were in conformance with regulations and rules therefore as required in the current manual of survey instructions of the United States Department of the Interior, Bureau of Land Management or by a decree of a Court of Law and/or that the corner points mentioned in lines 3, 4 and 5 above were in conformance with the rules of the Michigan Board of Land Surveyors or by a Decree of a Court of Law; established, re-established, monumented, re-monumented, recovered, found as expressed below:

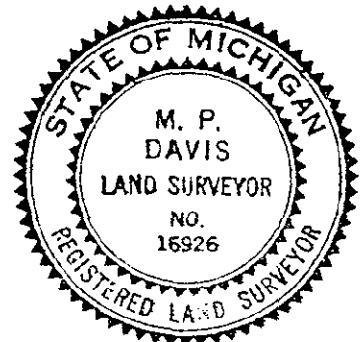
**NOTE: Not more than 4 corners, all in the same town and range, may be recorded on this certificate.**

**A. Description of original monument and accessories and/or subsequent restoration:**

- H-01 [N1/4 COR SEC 3] JOHN BURT, D.S. - 1845 - WOOD POST - (LYNN 10" - N26°E - 24 LINKS) (IRONWOOD 05" - N62°W - 20 LINKS) NO RECORD EVIDENCE OF CORNER RECOVERY AND/OR SUBSEQUENT MONUMENTATION
- H-03 [N1/4 COR SEC 10] A. MERRYWEATHER, D.S. - 1847 - WOOD POST - (SUGAR 12" - S80°W - 21 LINKS) (SUGAR 11" - N70°E - 32 LINKS) M.S. McNABB - 1920 - ID CORNER BY + ON STONE & BT STAKE SE 33' & CORNER FENCE POST NORTH 33.

**B. Description of corner evidence found and/or method applied in restoring or reestablishing corner:**

- H-01 [N1/4 COR SEC 3] NO CORNER EVIDENCE FOUND. REESTABLISHED CORNER POSITION AT MIDPOINT AND ON LINE WITH SECTION CORNER 1/2 MILE TO THE EAST AND WEST. CORNER POSITION FALLS IN AN EAST - WEST WINDROW APPARENTLY CREATED BY A LONG EXISTING FENCE LINE (NOW REMOVED, NO INDICATION OF OCCUPATION TO THE NORTH OR SOUTH.
- H-03 [N1/4 COR SEC 10] NO EVIDENCE OF THE STONE W/A + FOUND. CORNER POSITION FALLS ON EASTERLY EDGE OF A FARM FIELD AND NUMEROUS LARGE STONES WERE OBSERVED BULLDOZED INTO A TAG ALDER SWAMP TO THE EAST OF THE CORNER POSITION. REESTABLISHED CORNER POSITION 33.0' SOUTH OF AN EXISTING FENCE CORNER & AT McNABB'S RECORD DISTANCE EAST OF THE NW CORNER OF SEC 10. SPLIT OF THIS DISTANCE FITS AN EXISTING FENCE LINE TO THE NORTH AT THE 1/16 POSITION. ACCEPTED THIS LOCATION AS BEING THE BEST AVAILABLE EVIDENCE AS TO THE POSITION OF THE ORIGINAL CORNER.



**C. Description of monument for corner and accessories established to perpetuate locating the position of the corner:**

- H-01 SET A BERNTSEN A1NB30 ALUM MONUMENT WITH THE CAP STAMPED TO ID THE COR POSITION.  
 CEDAR 10" SURVEY MONUMENT SIGN POST NOTE: NO OTHER WIT'S AVAILABLE. FARM FIELD IN THE SE & SW QUADRANTS & A TREE PLANTATION OF SMALL TREES IN THE NE & NW QUADRANTS  
 N85°W SOUTH  
 81.00' 2.03' (TO FACE)
- H-03 SET A BERNTSEN A1NB30 ALUM MONUMENT WITH THE CAP STAMPED TO ID THE COR POSITION.  
 TAMARACK 09" W. BIRCH 05" SURVEY MONUMENT SIGN POST NOTE: NO OTHER WIT'S AVAILABLE. FARM FIELDS IN THE NW & SW QUADRANTS & TAG ALDER SWAMP IN THE NE & SE QUADRANTS  
 N11°E S05°E S58°W  
 27.30' 52.40' 2.16' (TO FACE)

NOTE: BEARINGS TO REFERENCE OBJECTS ARE MAGNETIC & DISTANCES ARE TO A NAIL W/A REFERENCE TAG UNLESS OTHERWISE NOTED.

Signed by M.P. Davis Date 11/27/97  
 Surveyor's Michigan License No. 16926