

STATE OF MICHIGAN
DEPARTMENT
OF
NATURAL RESOURCES
LAND CORNER RECORD

Delta COUNTY

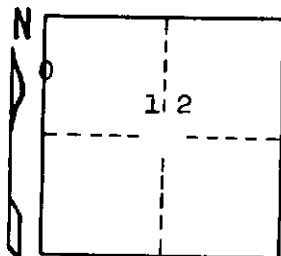
T 41 N R 23 W

DESCRIPTION OF CORNER N 1/16 corner for sections 11/12

CORNER MONUMENT 1" iron pipe with 4" aluminum cap

DATE MONUMENT PLACED AND WITNESSED 5/23/69, F. J. Bray

WITNESSES TO CORNER..... 12" cedar (N 1/16) (BT) N 57° E, 45½ links



10" cedar (N 1/16) (BT) N 46° W, 18½ links

AND

CIRCLE CORNER REGISTERED

DESCRIPTION IN DETAIL AS TO HOW CORNER WAS LOCATED AND IDENTIFIED OR RESTORED.

This corner was placed midway and on line between section corner to ^{North}~~south~~
and 1/4 corner to south.

SURVEYOR'S SEAL

DISTRIBUTION:

SIGNED Frank J. Bray
REGISTERED LAND SURVEYOR
Frank J. Bray

DATE 12/12/69

County Courthouse
Area Forester (Regions I & II)
District or Region Surveyor
Forestry Div., Lansing

R 4047
Rev. 10/68