

STATE OF MICHIGAN
DEPARTMENT
OF
NATURAL RESOURCES

LAND CORNER RECORD

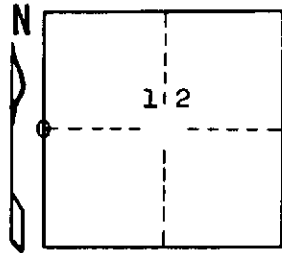
Delta COUNTY
T 41 N R 23 W

DESCRIPTION OF CORNER 1/4 corner for sections 11/12

CORNER MONUMENT 1" iron pipe with 4" aluminum cap

DATE MONUMENT PLACED AND WITNESSED 5/23/69, F. J. Bray

WITNESSES TO CORNER..... 15" Cedar (1/4 S) (NBT) N 14° E, 11 links



6" H. Maple (1/4 S) (NBT) S 75° E, 30 links

AND

CIRCLE CORNER REGISTERED

DESCRIPTION IN DETAIL AS TO HOW CORNER WAS LOCATED AND IDENTIFIED OR RESTORED.

This corner was replaced from rotted point of down wood post which had been set by M. McNabb, County Surveyor, in 1908. Blazed and notched cedar near.

SURVEYOR'S SEAL

DISTRIBUTION:

SIGNED Frank J. Bray
REGISTERED LAND SURVEYOR
Frank J. Bray

DATE 12/12/69

County Courthouse
Area Forester (Regions I & II)
District or Region Surveyor
Forestry Div., Lansing

R 4047
Rev. 10/68