

STATE OF MICHIGAN  
DEPARTMENT  
OF  
NATURAL RESOURCES  
LAND CORNER RECORD

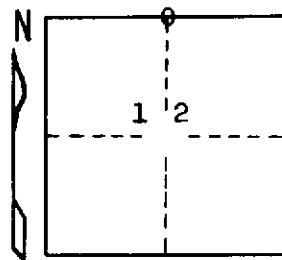
Delta COUNTY  
T 41 N R 23 W

DESCRIPTION OF CORNER 1/4 corner for sections  $\frac{1}{12}$

CORNER MONUMENT 1" iron pipe with 4" aluminum cap

DATE MONUMENT PLACED AND WITNESSED 5/23/69, F. J. Bray

WITNESSES TO CORNER..... 5" aspen (1/4 S) (NBT) S 40° W, 47 $\frac{1}{2}$  links



4" S. Maple (1/4 S) (NBT) N 87° W, 21 $\frac{1}{2}$  links

AND

CIRCLE CORNER REGISTERED

DESCRIPTION IN DETAIL AS TO HOW CORNER WAS LOCATED AND IDENTIFIED OR RESTORED.

This corner was placed at fence corner. Land owner claims this to be the location of 1/4 corner for over 60 years. No original evidence found.

SURVEYOR'S SEAL

DISTRIBUTION:

SIGNED

*Frank J. Bray*  
REGISTERED LAND SURVEYOR  
Frank J. Bray

DATE

12/12/69

County Courthouse  
Area Forester (Regions I & II)  
District or Region Surveyor  
Forestry Div., Lansing

R 4047  
Rev. 10/68