

STATE OF MICHIGAN  
DEPARTMENT  
OF  
NATURAL RESOURCES

LAND CORNER RECORD

Delta COUNTY

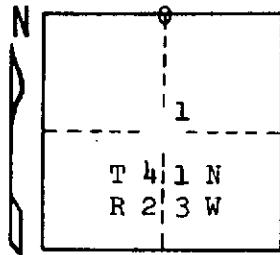
T 41 & 42 N R 23 W

DESCRIPTION OF CORNER 1/4 corner for sections <sup>36</sup> T42N R23W  
1 T41N R23W

CORNER MONUMENT 1/2" x 12" reinforcing rod driven in  $\angle$  of Blacktop road.

DATE MONUMENT PLACED AND WITNESSED 5/21/69, F. J. Bray

WITNESSES TO CORNER..... Fence corner post, S 01° W, 34.9 feet



Power pole, N 11° E, 48.8 feet

$\angle$  abandoned R.R., South, 81.6 feet

AND

CIRCLE CORNER REGISTERED

DESCRIPTION IN DETAIL AS TO HOW CORNER WAS LOCATED AND IDENTIFIED OR RESTORED.

This corner was replaced from measurements made by M. McNabb in 1908.  
Fence line to N and S distance to R.R. track checks. Original B.T.'s and McNabb's  
N.B.T. gone because of road construction.

SURVEYOR'S SEAL

DISTRIBUTION:

SIGNED

Frank J. Bray  
REGISTERED LAND SURVEYOR  
Frank J. Bray

DATE

12/11/69

County Courthouse  
Area Forester (Regions I & II)  
District or Region Surveyor  
Forestry Div., Lansing

R 4047  
Rev. 10/68