

STATE OF MICHIGAN
DEPARTMENT
OF
NATURAL RESOURCES

LAND CORNER RECORD

Delta COUNTY

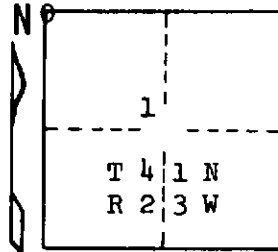
T 41 & 42 N R 23 W

DESCRIPTION OF CORNER Section corner for sections ^{35/36} T 42N R23W
2/1 T 41N R23W

CORNER MONUMENT 1 1/4" I.D. x 30" iron pipe

DATE MONUMENT PLACED AND WITNESSED 5/21/69, F. J. Bray

WITNESSES TO CORNER,..... ℄ of blacktop road, north, 20.4 feet



Power pole, N 27° E, 74.0 feet

Fence corner post, S 04° E, 25.5 feet

AND

CIRCLE CORNER REGISTERED

DESCRIPTION IN DETAIL AS TO HOW CORNER WAS LOCATED AND IDENTIFIED OR RESTORED.

This corner was replaced from measurements made by M. McNabb, County Surveyor, in 1908 to ℄ of R.R. now abandoned and with distance on north side of section 1. Fence lines to north and south. No original evidence found. Distances to streams to north and to south check fairly well.

SURVEYOR'S SEAL

SIGNED Frank J. Bray DATE 12/11/69
REGISTERED LAND SURVEYOR
Frank J. Bray

DISTRIBUTION:

County Courthouse
Area Forester (Regions I & II)
District or Region Surveyor
Forestry Div., Lansing

R 4047
Rev. 10/68