

STATE OF MICHIGAN
DEPARTMENT
OF
NATURAL RESOURCES
LAND CORNER RECORD

Delta COUNTY

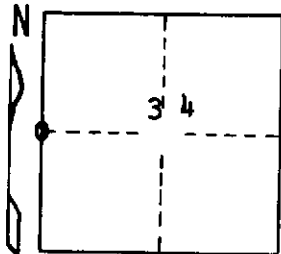
T 41 N R 23 W

DESCRIPTION OF CORNER 1/4 corner for sections 33/34

CORNER MONUMENT Iron rod buried in E - W gravel road

DATE MONUMENT PLACED AND WITNESSED 6/9/70, F. J. Bray with B. McDonald

WITNESSES TO CORNER..... 18" Elm (NBT) S 36° W, 32.2'



Power pole N 02° E, 38.5'

AND

CIRCLE CORNER REGISTERED

DESCRIPTION IN DETAIL AS TO HOW CORNER WAS LOCATED AND IDENTIFIED OR RESTORED.

This corner was rewitnessed as set by M. McNabb in 1900. He stated sugar B.T. to SE present at that time. Found iron rod buried 5" below surface of road and approximately 2.0' south of ℓ

SURVEYOR'S SEAL

DISTRIBUTION:

SIGNED Frank J. Bray DATE 6/24/70
REGISTERED LAND SURVEYOR
Frank J. Bray

County Courthouse
Area Forester (Regions I & II)
District or Region Surveyor
Forestry Div., Lansing

R 4047
Rev. 10/68