

SURVEY & REMONUMENTATION

MAR 21 1997

COMMISSION

LAND CORNER RECORDATION CERTIFICATE
Filing Requirement of Act 74, Mich. P.A. 1970

Approved By Delta County
Land Survey Remonumentation
Peer Group Under Act 345 Of
P.A. Of 1990 On 12/12, 1996
Walter C. Thorne
Chairman

For corners in

DELTA

(County)

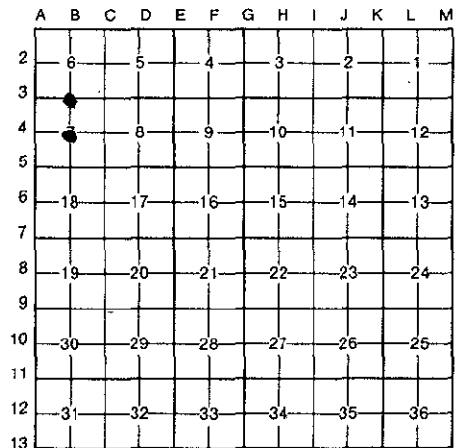
Located In:

Corner Code #

- | | | | | | | | |
|------------------------------------|---|----|---|---|----|---|------------------|
| 1. Public Land Survey | T | 42 | N | R | 23 | W | <u>B-3</u> & B-4 |
| | T | | R | | | | |
| | T | | R | | | | |
| | T | | R | | | | |
| 2. Property Controlling in Section | S | | T | | R | | |
| | S | | T | | R | | |
| 3. Miscellaneous Property in Sec. | S | | T | | R | | |
| | S | | T | | R | | |

DEC 20 1996
Recorded
at 2:00 o'clock PM
Liber 8 Page 166
Walter C. Thorne
Delta County, MI Reg. of Deeds
Register of Deeds Stamp & File Number

4. Lot No. _____, Recorded Plat _____
5. Private Claims B-3 [1/4 COR S.7] B-4 [1/4 COR S.7]



I, M.P. DAVIS, in a field survey on 19 NOVEMBER, 19 96, do hereby certify that under requirements of P.A. 74, Michigan P.A. of 1970, the corner points mentioned in lines 1 and 2 above were in conformance with regulations and rules therefore as required in the current manual of survey instructions of the United States Department of the Interior, Bureau of Land Management or by a decree of a Court of Law and/or that the corner points mentioned in lines 3, 4 and 5 above were in conformance with the rules of the Michigan Board of Land Surveyors or by a Decree of a Court of Law; established, re-established, monumented, re-monumented, recovered, found as expressed below:

NOTE: Not more than 4 corners, all in the same town and range, may be recorded on this certificate.

A. Description of original monument and accessories and/or subsequent restoration:
B-3 [1/4 COR S.7] E.C.MARTIN,D.S. -1852 - WOOD POST (DEAD TAMARACK 12"-S28°W-114 LINKS) (CEDAR 08"-N08°W-30 LINKS)
D.A.BROTHERTON-1910-ID CORNER POSITION BY REMAINS OF "GLO" ET'S & NOTED NEW BT'S (TAMARACK 8"-N64°W-27.6')(TAMARACK 10"-N86°W-47
J.E.GINGRASS-1912-IN PLACE-NO NEW WIT'S NOTED

B-4 [1/4 COR S.7] NOT SET IN ORIGINALS
NO RECORD EVIDENCE OF CORNER MONUMENTATION



B. Description of corner evidence found and/or method applied in restoring or reestablishing corner:
B-3 [1/4 COR S.7] NO CORNER EVIDENCE FOUND. REESTABLISHED N-S CORNER POSITION IN LINE WITH ANCIENT FENCE LINES EAST AND WEST. E-W POSITION ESTABLISHED FROM ANGULAR MEASUREMENTS FROM ADJOINING CORNERS AS SHOWN IN THE 1912 RECORDS OF J.E.GINGRASS.

B-4 [1/4 COR S.7] FOUND IN PLACE A 1" SOLID IRON PIN AT POSITION INDICATED BY INTERSECTION OF OLD FARM FENCES EAST & WEST AND COUNTY ROAD C/L NORTH & SOUTH. BELIEVE THIS CORNER TO HAVE BEEN SET BY J.E.GINGRASS IN 1912. NO DESCRIPTION OF THE CORNER IS GIVEN BY GINGRASS AND IS ONLY REFERENCED TO BY A CIRCULAR SYMBOL IN HIS FIELD NOTES. AS THE CORRESPONDING 1/4 CORNERS HAVE BEEN DESTROYED I HAVE ACCEPTED THE EXISTING MONUMENT & UTILIZED IT TO RESTORE THE 1/4 CORNERS.

C. Description of monument for corner and accessories established to perpetuate locating the position of the corner:

B-3 SET, 6" BELOW ROAD SURFACE, A 5/8" X 18" REBAR W/A 3 1/4" ALUM CAP STAMPED TO ID THE CORNER POSITION.
TAMARACK 13" SPRUCE 18" DRILL HOLE IN LARGE FIELD STONE TAMARACK 9" SURVEY MONUMENT SIGN POST
N25°W 111.25' S80°E 46.28' S49°E 65.22' S73°W 95.18' N87°W 24.48' (TO FACE)

B-4 SET, OVER EXISTING MON & 6" BELOW GRADE, A 5/8" X 18" REBAR W/A 3 1/4" ALUM CAP STAMPED TO ID THE CORNER POSITION.
SPRUCE 03" SPRUCE 05" SPRUCE 05" SURVEY MONUMENT SIGN POST
N47°W 41.54' N57°E 40.06' S75°E 36.90' S58°W 27.68' (TO FACE)

NOTE: BEARINGS TO REFERENCE OBJECTS ARE MAGNETIC & DISTANCES ARE TO A NAIL IN THE CENTER OF THE OBJECT, UNLESS OTHERWISE NOTED.

Signed by M.P. Davis Date 12/10/96

Surveyor's Michigan License No. 16926