

REMONUMENTATION

MAR 2 1 1997

COMMISSION

Approved By Delta County
Land Survey Remonumentation
Peer Group Under Act 345 Of
P.A. Of 1990 On 12/12, 1996

LAND CORNER RECORDATION CERTIFICATE
Filing Requirement of Act 74, Mich. P.A. 1970

Walter E. Thomas
Acting Chairman

For corners in
DELTA
(County)

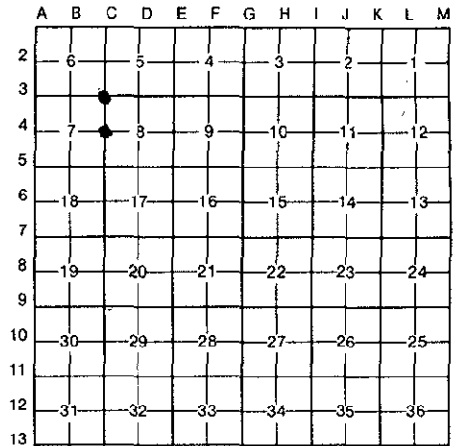
Located In: Corner Code #

1. Public Land Survey	T <u>42</u> N R <u>23</u> W	C-3 & C-4
	T _____ R _____	
	T _____ R _____	
	T _____ R _____	
2. Property Controlling in Section	S _____ T _____ R _____	
	S _____ T _____ R _____	
3. Miscellaneous Property in Sec.	S _____ T _____ R _____	
	S _____ T _____ R _____	

Recorded DEC 20 1996
at 2:00 o'clock PM
Liber 8 Page 161
Walter E. Thomas
Delta County, Ill. Reg. of Deeds

Register of Deeds Stamp & File Number

4. Lot No. _____, Recorded Plat _____
5. Private Claims C-3 [NW COR S.8] C-4 [W1/4 COR S.8]



I, M.P. DAVIS, in a field survey on 04 DECEMBER, 19 96, do hereby certify that under requirements of P.A. 74, Michigan P.A. of 1970, the corner points mentioned in lines 1 and 2 above were in conformance with regulations and rules therefore as required in the current manual of survey instructions of the United States Department of the Interior, Bureau of Land Management or by a decree of a Court of Law and/or that the corner points mentioned in lines 3, 4 and 5 above were in conformance with the rules of the Michigan Board of Land Surveyors or by a Decree of a Court of Law; established, re-established, monumented, re-monumented, recovered, found as expressed below:

NOTE: Not more than 4 corners, all in the same town and range, may be recorded on this certificate.

A. Description of original monument and accessories and/or subsequent restoration:

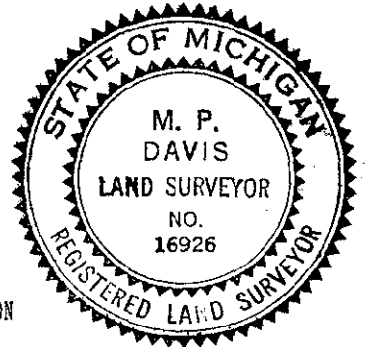
C-3 [NW COR S.8] E.C.MARTIN,D.S. -1852 - WOOD POST (DEAD HEMLOCK 18"-S66°W-48 LINKS) (CEDAR 16"-N59°E-49 LINKS)
M.S.McNABB-1914-ORIGINALS DESTROYED-ESTABLISHED FROM IMPROVEMENTS-NO WIT'S NOTED

C-4 [W1/4 COR S.8] E.C.MARTIN,D.S. - 1852 -WOOD POST (DEAD TAMARACK 18"-S45°E-48 LINKS) (DEAD TAMARACK 12"-N55°W-08 LINKS)
NO RECORD EVIDENCE OF CORNER RECOVERY OR SUBSEQUENT CORNER MONUMENTATION

B. Description of corner evidence found and/or method applied in restoring or reestablishing corner:

C-3 [NW COR S.8] NO EVIDENCE FOUND OF McNABB'S 1914 CORNER. REESTABLISHED CORNER POSITION AT JCT. OF ANCIENT FENCE LINES E & W AND C/L OF COUNTY ROAD TO THE NORTH. ACCEPTED AS BEING THE BEST AVAILABLE EVIDENCE AS TO THE LOCATION OF THE POSITION OF THE ORIGINAL CORNER.

C-4 [W1/4 COR S.8] NO CORNER EVIDENCE FOUND. EXTENDED LINE EAST FROM W1/4 COR OF SEC 7 THRU THE C1/4 COR (AS MONUMENTED BY PERSON UNKNOWN) & SET THE W1/4 COR OF SEC 8 ON THIS LINE AT IT'S INTERSECTION WITH A STRAIGHT LINE BETWEEN THE NW & SW COR'S OF SEC. 8. THE COR IS LOCATED IN A DENSELY WOODED TAMARACK SWAMP WITH NO INDICATION OF OCCUPATION OR THE CORNER POSITION. THIS POSITION DOES FIT QUITE WELL WITH THE REMAINS OF AN OLD TIMBER CUT LINE RUNNING TO THE WEST AND IS LOCATED 24' M/L WEST OF AN OLD N-W WOODS ROAD NOW OVER GROWN WITH ALDER. ACCEPTED AS BEING THE BEST AVAILABLE EVIDENCE AS TO THE POSITION OF THE ORIGINAL CORNER.



C. Description of monument for corner and accessories established to perpetuate locating the position of the corner:

C-3 SET, 6" BELOW GRADE, A 5/8" X 18" REBAR W/A 3 1/4" ALUM CAP STAMPED TO ID THE CORNER POSITION.

SPRUCE 04"	SPRUCE 04"	SPRUCE 06"	SPRUCE 06"	SURVEY MONUMENT SIGN POST
N34°W	N30°E	S31°E	WEST	EAST
64.84'	58.05'	50.71'	74.80'	11.20' (TO FACE)

C-4 SET A BERNTSEN AINB30 ALUM MONUMENT WITH THE CAP STAMPED TO ID THE CORNER POSITION.

TAMARACK 10"	TAMARACK 06"	TAMARACK 09"	TAMARACK 08"	SURVEY MONUMENT SIGN POST
N20°W	N50°E	S47°E	S37°W	WEST
6.35'	9.40'	10.26'	9.96'	1.97' (TO FACE)

NOTE: BEARINGS TO REFERENCE OBJECTS ARE MAGNETIC & DISTANCES ARE TO A NAIL IN THE CENTER OF THE OBJECT, UNLESS OTHERWISE NOTED.

Signed by M.P. Davis Date 12/10/96
Surveyor's Michigan License No. 16926