

JAN 22 2000

SECTION

LAND CORNER RECORDATION CERTIFICATE
Filing Requirement of Act 74, Mich. P.A. 1970

Approved By Delta County
Land Survey Remonumentation
Peer Group Under Act 345 Of
P.A. Of 1990 On 12/12, 1996

Robert Schmeling
Acting Chairman

For corners in

DELTA
(County)

Located In:

Corner Code #

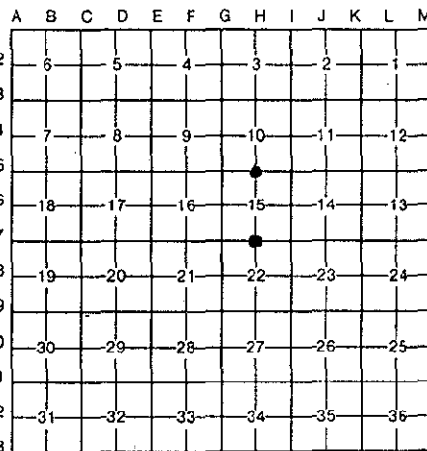
- 1. Public Land Survey T 42 N R 23 W H-5 6 **H-7**
- 2. Property Controlling in Section S T R
- 3. Miscellaneous Property in Sec. S T R

Recorded DEC 20 1996
2:00 PM
Liber 8 Page 169

Robert C. ...
Delta County, MI Reg. of Deeds

Register of Deeds Stamp & File Number

- 4. Lot No. , Recorded Plat
- 5. Private Claims H-5 [N1/4 COR S15] H-7 [N1/4 COR S.22]



I, M.P. DAVIS in a field survey on NOVEMBER, 1996, do hereby certify that under requirements of P.A. 74, Michigan P.A. of 1970, the corner points mentioned in lines 1 and 2 above were in conformance with regulations and rules therefore as required in the current manual of survey instructions of the United States Department of the Interior, Bureau of Land Management or by a decree of a Court of Law and/or that the corner points mentioned in lines 3, 4 and 5 above were in conformance with the rules of the Michigan Board of Land Surveyors or by a Decree of a Court of Law; established, re-established, monumented, re-monumented, recovered, found as expressed below:

NOTE: Not more than 4 corners, all in the same town and range, may be recorded on this certificate.

A. Description of original monument and accessories and/or subsequent restoration:

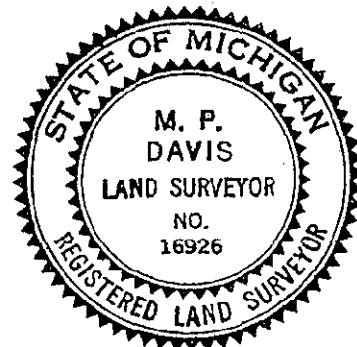
H-5 [N1/4 COR S.15] E.C.MARTIN, D.S. - 1852 - WOOD POST (SPRUCE 08"-N55°W-18 LINKS) (CEDAR 12'-S35°E-12 LINKS)
M.S.McNABB-1913-SET IN C/L OF ROAD & GATE WHERE POST WAS SAID BY SETTLERS TO HAVE STOOD.
M.S.McNABB-1920-STAKE IN PLACE PREVIOUS-SET IRON BOLTS N & S 25'

H-7 [N1/4 COR S.22] E.C.MARTIN, D.S. - 1852 - WOOD POST (FIR 11"-N49°E-20 LINKS)(W.BIRCH 10"-N55°W-25 LINKS)
NO RECORD EVIDENCE OF CORNER RECOVERY OR SUBSEQUENT MONUMENTATION

B. Description of corner evidence found and/or method applied in restoring or reestablishing corner:

H-5 [N1/4 COR S.15] FOUND IN PLACE ON S. EDGE OF E-W GRAVEL RD. A 1 1/4" IRON PIPE, NO EVIDENCE OF McNABB'S IRON BOLT BT'S. DISTANCES EAST & WEST TO ADJOINING COR'S CHECK WELL WITH McNABB'S 1920 SURVEY DISTANCES. ACCEPTED EXISTING MONUMENT AS BEING THE BEST AVAILABLE EVIDENCE AS TO LOCATION OF THE POSITION OF THE ORIGINAL CORNER.

H-7 [N1/4 COR S.22] NO CORNER EVIDENCE FOUND. SET CORNER AT MIDPOINT BETWEEN SEC COR'S 1/2 MILE E & W. CORNER POSITION FALL IN APPROX C/L OF ROAD SOUTH & 23' N/L SOUTH OF ROAD C/L EAST.



C. Description of monument for corner and accessories established to perpetuate locating the position of the corner:

H-5 SET, INSIDE EXISTING I.P., A 5/8" X 18" REBAR W/A 3 1/4" ALUM CAP STAMPED TO ID THE CORNER POSITION.

SPRUCE 09"	SPRUCE 06"	SPRUCE 07"	TAMARACK 08"	SURVEY MONUMENT SIGN POST
N12°W	S45°E	S61°W	N49°E	NORTH
51.34'	41.03'	71.25'	57.08'	24.40' (TO FACE)

H-7 SET, 6" BELOW GRADE, A 5/8" X 18" REBAR W/A 3 1/4" ALUM CAP STAMPED TO ID THE COR POSITION.

SPRUCE 24'	ELM 06"	ELM 05"	BALSAM 08"	SURVEY MONUMENT SIGN POST
N35°W	N45°E	S78°E	S22°W	WEST
44.06'	58.93'	37.32'	84.41'	21.11' (TO FACE)

NOTE: BEARINGS TO REFERENCE OBJECTS ARE MAGNETIC & DISTANCES ARE TO A NAIL IN THE CENTER OF THE OBJECT, UNLESS OTHERWISE NOTED.

Signed by M.P. Davis Date 12/10/96

Surveyor's Michigan License No. 16926