

STATE OF MICHIGAN
DEPARTMENT
OF
NATURAL RESOURCES

LAND CORNER RECORD

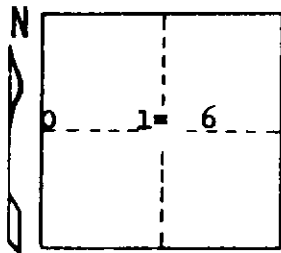
Delta COUNTY
T 43 N R 22W

DESCRIPTION OF CORNER 1/4 Corner for Sections 17/16

CORNER MONUMENT 1" iron pipe with 4" aluminum cap

DATE MONUMENT PLACED AND WITNESSED 10-20-72 F. J. Bray

WITNESSES TO CORNER..... 7" Balsam (1/4S) (NBT) N62 E, 11.5'



4" H. Maple (1/4S) (NBT) S 68 W, 8.9'

AND

CIRCLE CORNER REGISTERED

DESCRIPTION IN DETAIL AS TO HOW CORNER WAS LOCATED AND IDENTIFIED OR RESTORED.

This corner was placed midway and on the line between section corners to the north and to the south. No original evidence found.

SURVEYOR'S SEAL

DISTRIBUTION:

Forestry Division, Lansing

SIGNED Frank J. Bray
REGISTERED LAND SURVEYOR
Frank J. Bray

DATE 11-24-72